

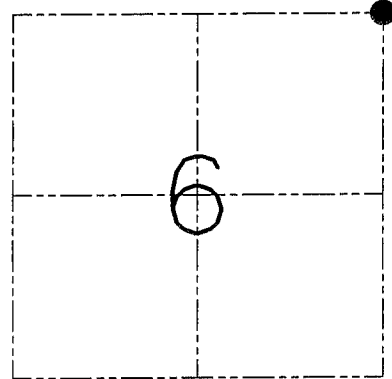
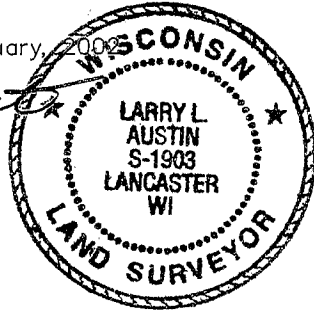
U.S. PUBLIC LAND SURVEY MONUMENT RECORD - GRANT COUNTY, WI
 Section 06, Town 1 North Range 1 West, Town of Hazel Green

CERTIFICATE

I, Larry L. Austin, do hereby certify that the corner location on this record was determined by me and/or under my direct supervision and that this U.S. public land survey monument record is correct and complete to the best of my knowledge and belief.

Dated this 16th day of January, 2009

Larry L. Austin
 Larry L. Austin S-1903



● = CORNER LOCATION

HISTORY OF CORNER ESTABLISHMENT

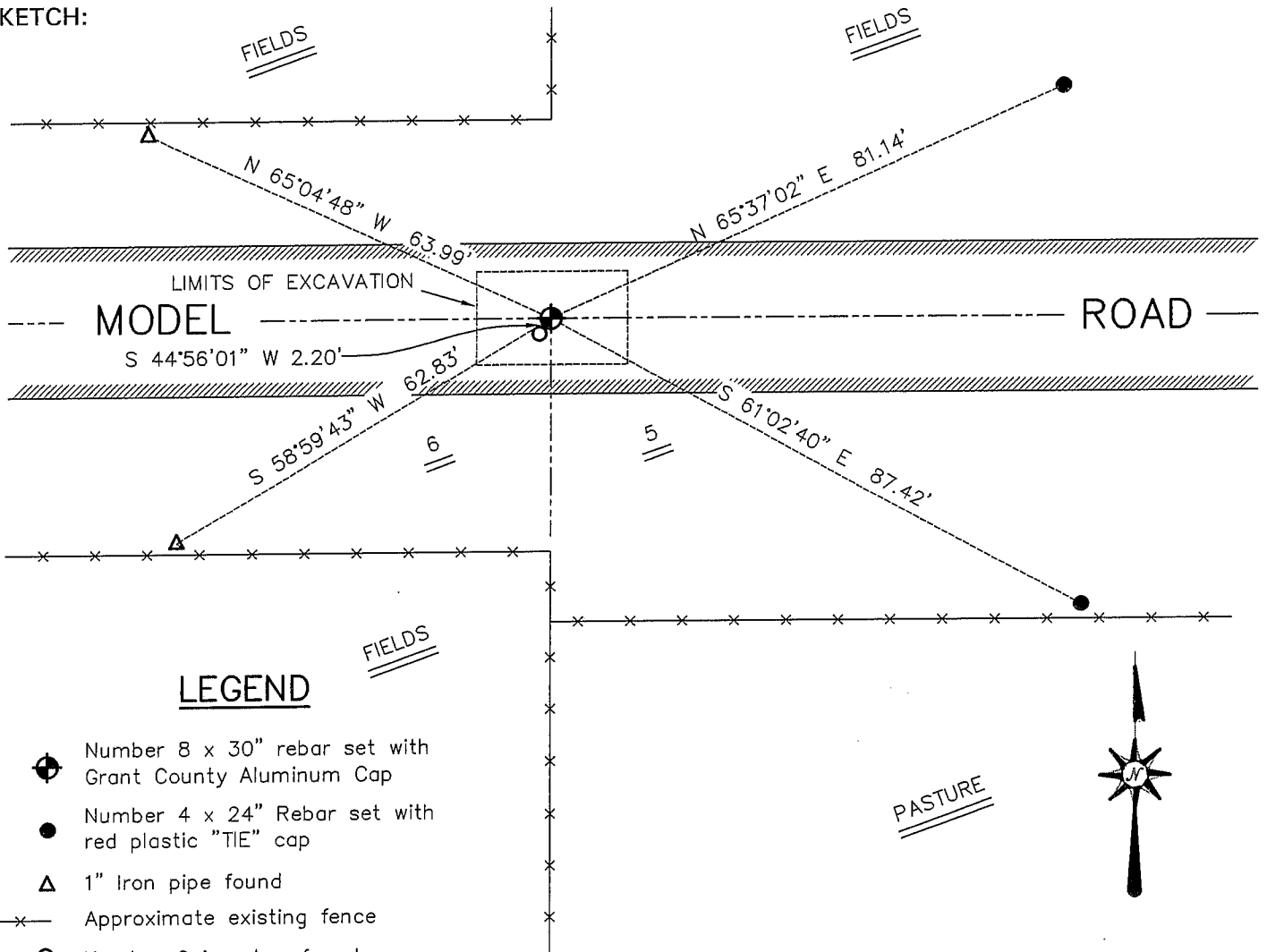
Corner was originally set in 1832 by Lucius Lyon. In 1879 Barber replanted a corner Stone. In 1995 I set a No. 6 iron bar at this location.

DESCRIPTION OF CORNER EVIDENCE FOUND

The area was excavated in search of the Stone which was found. The Stone was replaced and tied after an EDM & GPS traverse of the area.

DESCRIPTION OF CORNER AND WITNESS MONUMENTS, references and accessories used to perpetuate the original or re-established location of this corner. Witnesses to the corner location Bobby Sedgwick & Shelby Blindert & Brad Digman

SKETCH:



SKETCH NOT TO SCALE

AUSTIN ENGINEERING, LLC

4211 HWY 81 EAST, LANCASTER, WI 53813
 PHONE 608-723-6363 FAX 608-723-6702

FIELDBOOK: SDR33, 2200
 G: \T5NR3W\08
 C: \SWA\TIE\T1NR1W\11
 CREW: BS-SB-SA-BD

DRAWN BY: SW AUSTIN
 APPROVED: LL AUSTIN

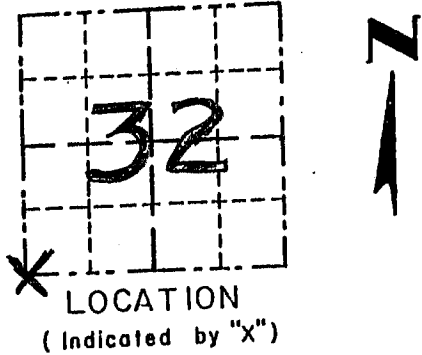
CORNER NUMBER 11

GRANT COUNTY

Survey Monument Record

TYPE OF MONUMENT 3/4" IRON BAR
 STATE PLANE COORDINATES: N _____
 E _____
 ELEVATION — M.S.L. DATUM: _____
 THETA ANGLE: _____
 FIELD BOOK: _____
 PAGE _____

CORNER NO. 131
 SECTION 32
 TOWN 2 N
 RANGE 1 W
SW COR

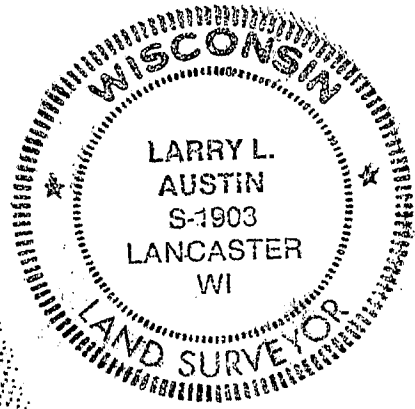


BASIS FOR MONUMENT LOCATION

(Use reverse side if necessary)

Show info such as: History of corner, with reference to Vol. and pg., dates, surveyor; exact description of monument replaced; if location computed, by taped or EDM traverse; landowner, remarks, etc.

SEAL:



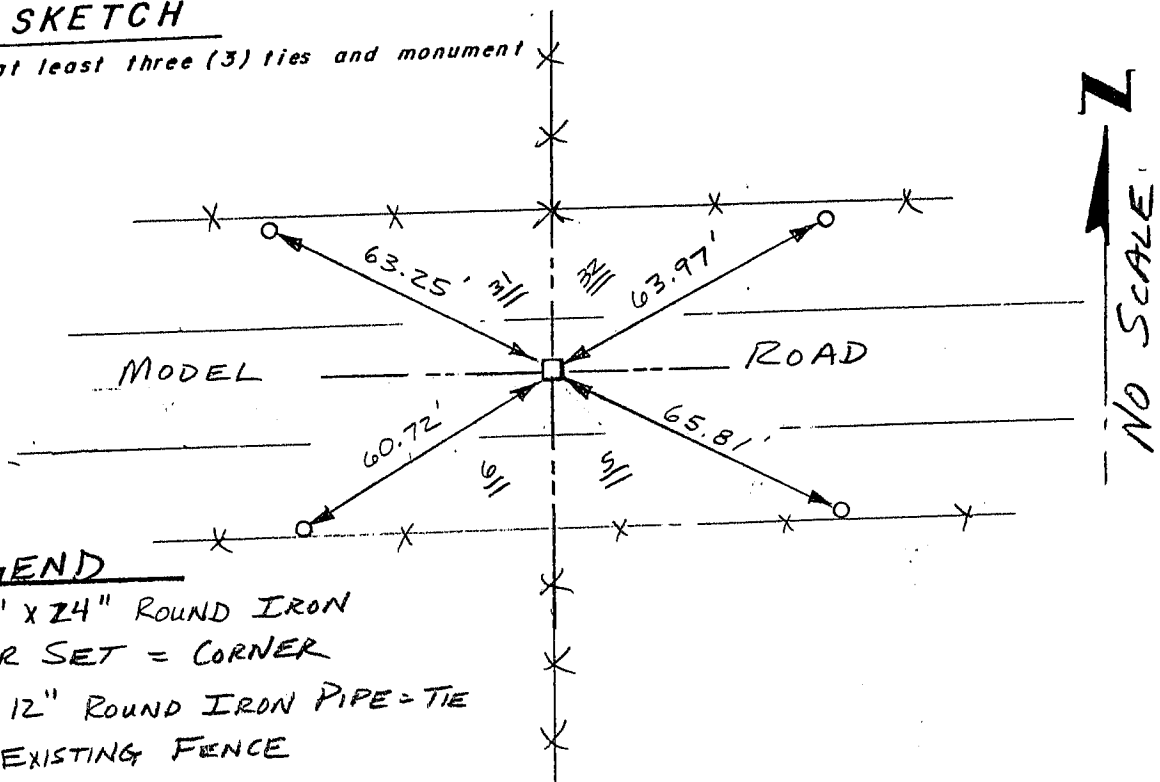
CORNER ORIG SET BY LUCIUS LYON - 1832; NO RECORD OF CORNER FOUND SINCE THE ORIGINAL SURVEYS; I SET THE CORNER AT OCCUPIED LOCATION & VERIFIED BY EDM TRAVERSE OF THE AREA.

CERTIFIED CORRECT

Larry L. Austin
 Registered Land Surveyor
 DATE: 2/5/95

TIE SKETCH

Show at least three (3) ties and monument



LEGEND

- 3/4" x 24" ROUND IRON BAR SET = CORNER
- 1" x 12" ROUND IRON PIPE = TIE
- X — EXISTING FENCE