

# GRANT COUNTY CERTIFIED LAND CORNER

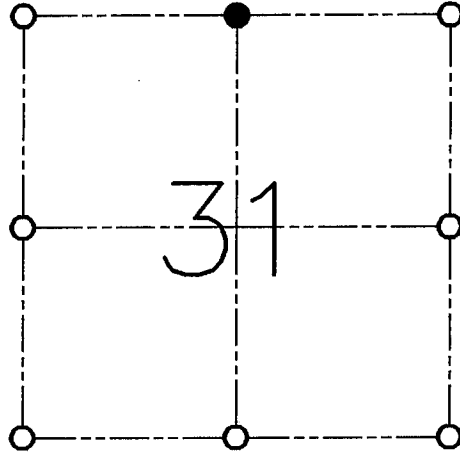
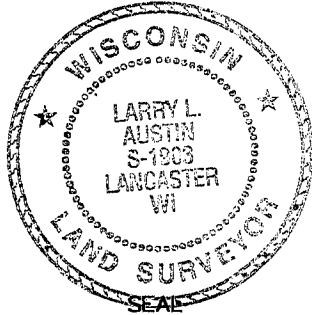
CORNER NO. 112

**CERTIFICATE:**

I, LARRY L. AUSTIN, DO HEREBY CERTIFY THAT ON TENTH DAY OF NOVEMBER, 1998, I FOUND NO EVIDENCE OF THE NORTH 1/4 CORNER OF SECTION 31, TOWN 2 NORTH, RANGE 1 WEST, OF THE FOURTH PRINCIPAL MERIDIAN, AND I RE-ESTABLISHED SAID CORNER ACCORDING TO THE WISCONSIN STATUTES AS SHOWN AND DESCRIBED HEREON.

DATED THIS NINTH DAY OF JANUARY, 1999

*Larry L. Austin*  
LARRY L. AUSTIN S-1903



● = CORNER LOCATION

NORTH 1/4 OF SECTION 31  
T 2 N R 1 W  
TOWN OF SMELSER

**HISTORY OF ORIGINAL CORNER ESTABLISHMENT:**

CORNER SET IN 1832 BY LUCIUS LYON.

**DESCRIPTION OF CORNER EVIDENCE FOUND:**

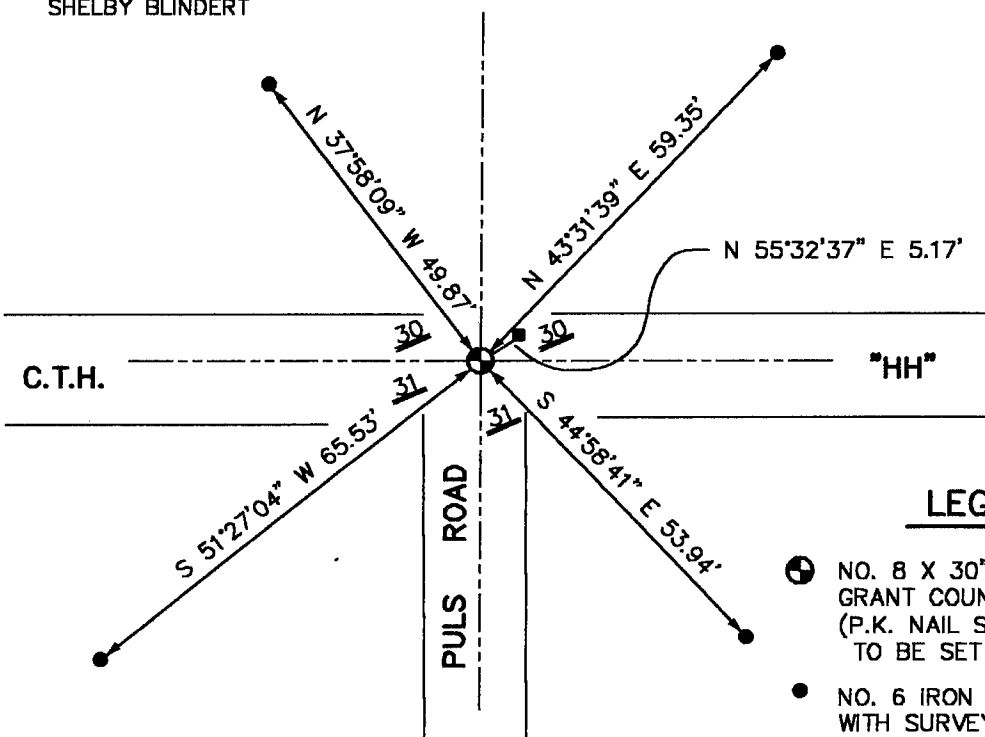
CORNER WAS SET ONLINE BETWEEN THE NORTHWEST CORNER AND THE NORTHEAST CORNER AT THE PRORATED DISTANCE. THIS LOCATION FIT WELL WITH CENTERLINE OF THE ROAD SOUTH. VERIFIED THIS LOCATION USING E.D.M. AND G.P.S. METHODS.

**DESCRIPTION OF CORNER AND WITNESS MONUMENTS, REFERENCES AND ACCESSORIES USED TO PERPETUATE THE ORIGINAL OR RE-ESTABLISHED LOCATION OF THIS CORNER:**

**WITNESS TO THE CORNER LOCATION:**

BOBBY SEDGWICK  
SHELBY BLINDERT

**SKETCH:**



SKETCH NOT TO SCALE

**LEGEND**

- NO. 8 X 30" REBAR SET WITH GRANT COUNTY ALUMINUM CAP (P.K. NAIL SET - MONUMENT TO BE SET SPRING 1999)
- NO. 6 IRON BAR FOUND WITH SURVEY MARKER SIGNS
- P.K. NAIL FOUND