

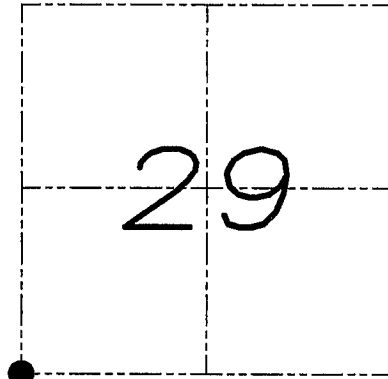
# U.S. PUBLIC LAND SURVEY MONUMENT RECORD

Section 29, Town 2 North Range 1 West, Town of Smelser, Grant County, Wisconsin

## CERTIFICATE

I, Larry L. Austin, do hereby certify that the corner location on this record was determined by me and/or under my direct supervision and that this U.S. public land survey monument record is correct and complete to the best of my knowledge and belief.

*Larry L. Austin*  
Larry L. Austin, S-1903



● = CORNER LOCATION

## HISTORY OF CORNER

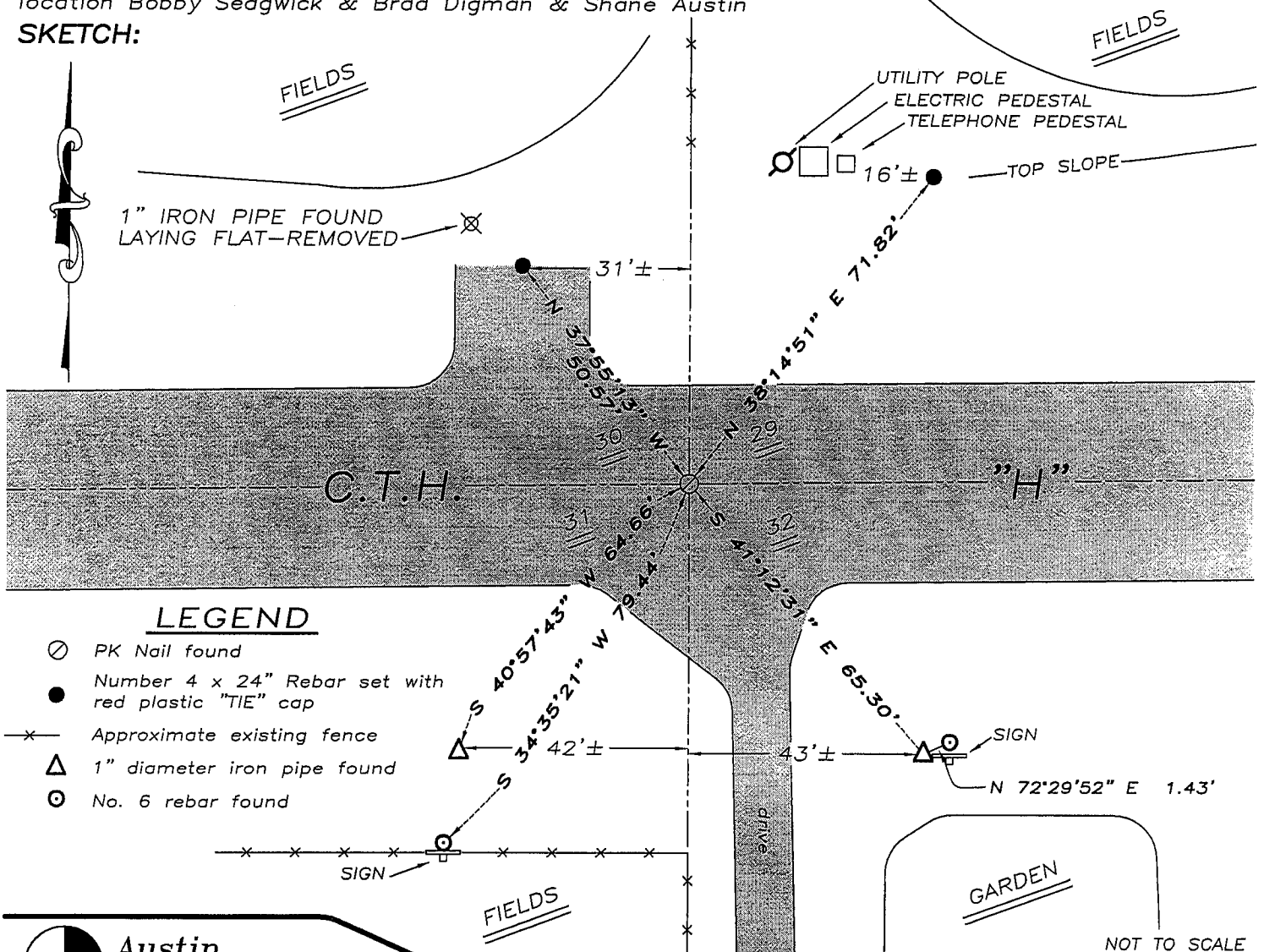
Corner was originally set in 1832 by Lyon. Bowden reestablished the corner in 1985. In 1995 I found and accepted a 1.25" iron bar at this location. No other record of the corner was found.

## CORNER EVIDENCE FOUND

The corner monument was lost due to recent highway construction. Two ties were found along with two ties of unknown origin. I found and accepted a P.K. Nail at this location and set two new ties as shown below. Verified this location using EDM & GPS methods.

DESCRIPTION OF CORNER AND WITNESS MONUMENTS, references and accessories used to perpetuate the original or re-established location of this corner. Witnesses to monument location Bobby Sedgwick & Brad Digman & Shane Austin

## SKETCH:



## LEGEND

- ⊙ PK Nail found
- Number 4 x 24" Rebar set with red plastic "TIE" cap
- x— Approximate existing fence
- △ 1" diameter iron pipe found
- ⊙ No. 6 rebar found



**Austin Engineering LLC**

4211 HWY 81 E, LANCASTER, WI 53813  
PHONE 608-723-6363 FAX 608-723-6702

JOB NUMBER 07S346  
FIELDBOOK: TDSR, 2711  
G:\T2NR1W\17  
H:\TIE\T2NR1W\111

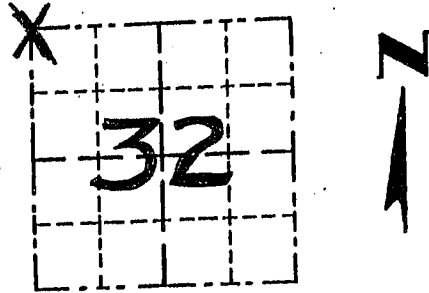
DRAWN BY: SW AUSTIN  
APPROVED: LL AUSTIN

# GRANT COUNTY

## Survey Monument Record

TYPE OF MONUMENT 1 1/4" IRON BAR FOUND  
 STATE PLANE COORDINATES: N \_\_\_\_\_  
 E \_\_\_\_\_  
 ELEVATION — M.S.L. DATUM: \_\_\_\_\_  
 THETA ANGLE: \_\_\_\_\_  
 FIELD BOOK: 94-11  
 PAGE \_\_\_\_\_

CORNER NO. 111  
 SECTION 32  
 TOWN 2 N  
 RANGE 1 W.  
NW COR



LOCATION  
(Indicated by "X")

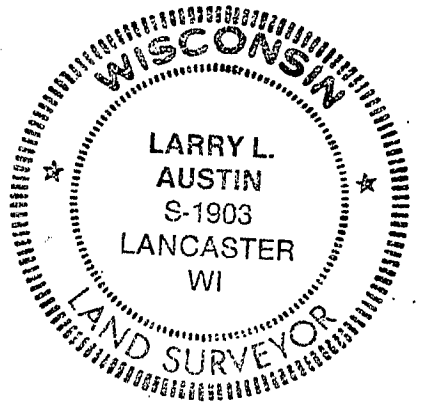
### BASIS FOR MONUMENT LOCATION

(Use reverse side if necessary)

Show info such as: History of corner, with reference to Vol. and pg., dates, surveyor; exact description of monument replaced; if location computed, by taped or EDM traverse; landowner, remarks, etc.

SEAL:

CORNER WAS ESTABLISHED BY  
 LUCIUS LYON IN 1832. BRUCE  
 BOWDEN RESTABLISHED CORNER  
 IN 1985. 1 1/4" BAR WAS FOUND, I ACCEPTED  
 ITS LOCATION & VERIFIED BY EDM  
 TRAVERSE OF THE AREA.



CERTIFIED CORRECT

*Larry L. Austin*  
 Registered Land Surveyor  
 DATE: 2/4/95

### TIE SKETCH

Show at least three (3) ties and monument

