

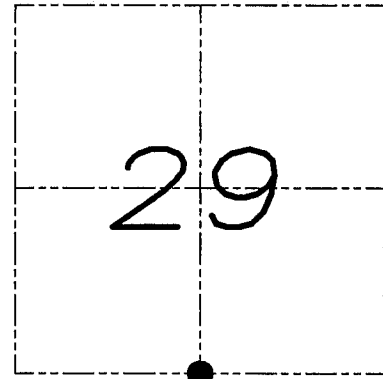
U.S. PUBLIC LAND SURVEY MONUMENT RECORD

Section 29, Town 2 North Range 1 West, Town of Smelser, Grant County, Wisconsin

CERTIFICATE

I, Larry L. Austin, do hereby certify that the corner location on this record was determined by me and/or under my direct supervision and that this U.S. public land survey monument record is correct and complete to the best of my knowledge and belief.

Larry L. Austin
 Larry L. Austin, S-1903



● = CORNER LOCATION

HISTORY OF CORNER

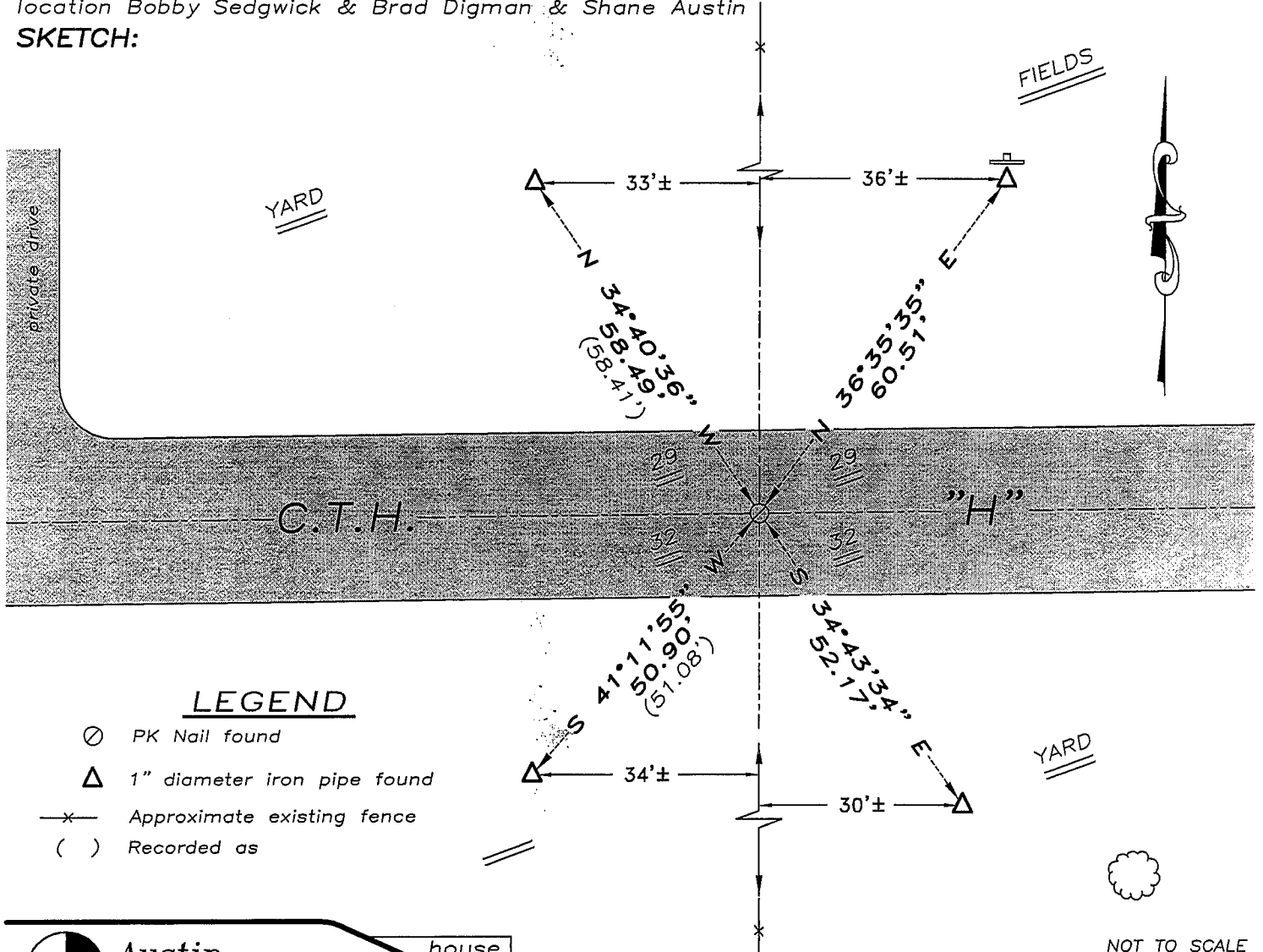
Corner was originally set in 1832 by Lyon. In 1985 Bowden reestablished the corner. In 1995 I found and accepted a 1" iron pipe at this location. No other record of the corner was found.

CORNER EVIDENCE FOUND

The monument was lost due to recent highway construction. All ties were found intact. I found and accepted a P.K. Nail at this location after confirming it's location with the existing ties. Verified this location using EDM & GPS methods.

DESCRIPTION OF CORNER AND WITNESS MONUMENTS, references and accessories used to perpetuate the original or re-established location of this corner. Witnesses to monument location Bobby Sedgwick & Brad Digman & Shane Austin

SKETCH:



LEGEND

- ⊙ PK Nail found
- △ 1" diameter iron pipe found
- x- Approximate existing fence
- () Recorded as

NOT TO SCALE



Austin Engineering LLC

4211 HWY 81 E, LANCASTER, WI 53813
 PHONE 608-723-6363 FAX 608-723-6702

JOB NUMBER 07S346
 FIELDBOOK: TDSR, 2711
 G:\T2NR1W\17
 H:\TIE\T2NR1W\110

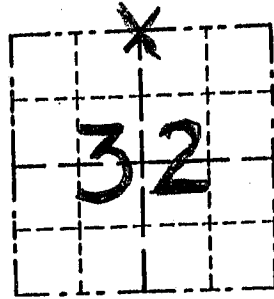
DRAWN BY: SW AUSTIN
 APPROVED: LL AUSTIN

GRANT COUNTY

Survey Monument Record

TYPE OF MONUMENT 1" IRON PIPE FOUND
 STATE PLANE COORDINATES: N _____
 E _____
 ELEVATION — M.S.L. DATUM: _____
 THETA ANGLE: _____
 FIELD BOOK: 9411
 PAGE _____

CORNER NO. 110
 SECTION 32
 TOWN 2 N
 RANGE 1 W
N 1/4



LOCATION
 (Indicated by "X")

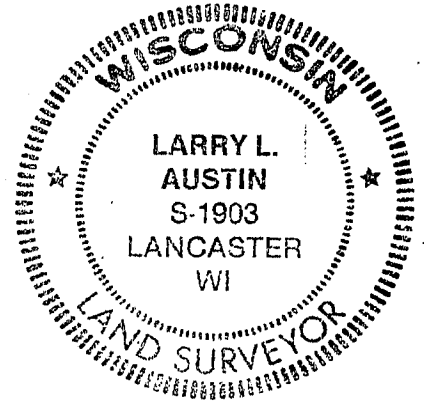
BASIS FOR MONUMENT LOCATION

(Use reverse side if necessary)

Show info such as: History of corner, with reference to Vol. and pg., dates, surveyor; exact description of monument replaced; if location computed, by taped or EDM traverse; landowner, remarks, etc.

SEAL:

LUCIUS LYON ESTABLISHED ORIGINAL CORNER IN 1832, BRUCE BOWDEN RESTABLISHED CORNER IN 1985. 1" IRON PIPE WAS ACCEPTED AND VERIFIED BY EDM TRAVERSE OF THE AREA.



CERTIFIED CORRECT

Larry L. Austin
 Registered Land Surveyor

DATE: 2/4/95

TIE SKETCH

Show at least three (3) ties and monument

