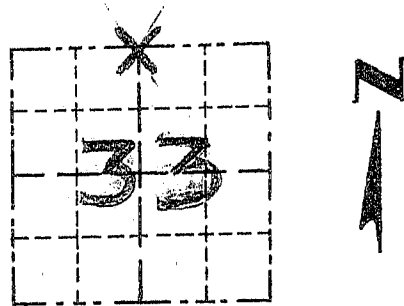


# GRANT COUNTY

## Survey Monument Record

TYPE OF MONUMENT 3/4" X 24" IRON BAR  
 STATE PLANE COORDINATES: N \_\_\_\_\_  
 E \_\_\_\_\_  
 ELEVATION — M.S.L. DATUM: \_\_\_\_\_  
 THETA ANGLE: \_\_\_\_\_  
 FIELD BOOK: 95-03  
 PAGE: 30

CORNER NO. 108  
 SECTION 33  
 TOWN 2N  
 RANGE 1W



LOCATION  
 (Indicated by "X")

### BASIS FOR MONUMENT LOCATION

(Use reverse side if necessary)

Show info such as: History of corner, with reference to Vol. and pg., dates, surveyor; exact description of monument replaced; if location computed, by taped or EDM traverse; landowner, remarks, etc.

SEAL:



MONUMENT SET AT OCCUPIED  
 LOCATION; NO RECORD FOUND  
 OF CORNER SINCE ORIGINAL  
 SURVEYS; LOCATION VERIFIED  
 BY PROPORTIONATE MEASURE  
 MENTS TO OTHER CORNERS  
 IN THE AREA; EDM  
 TRAVERSE USED.

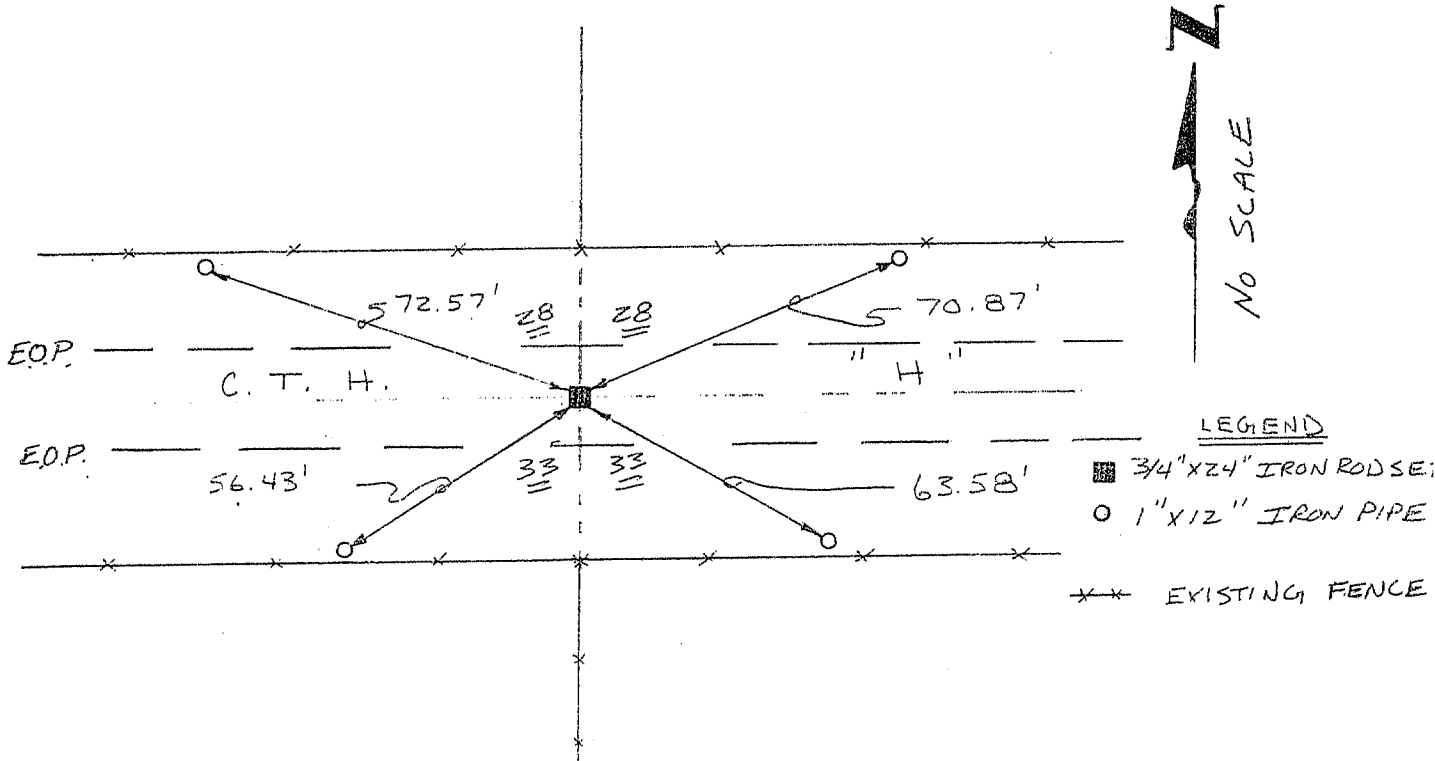
CERTIFIED CORRECT

*Larry L. Austin*  
 Registered Land Surveyor

DATE: \_\_\_\_\_

### TIE SKETCH

Show at least three (3) ties and monument



**UNITED STATES PUBLIC LAND SURVEY MONUMENT RECORD**

OF

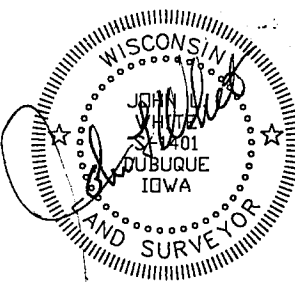
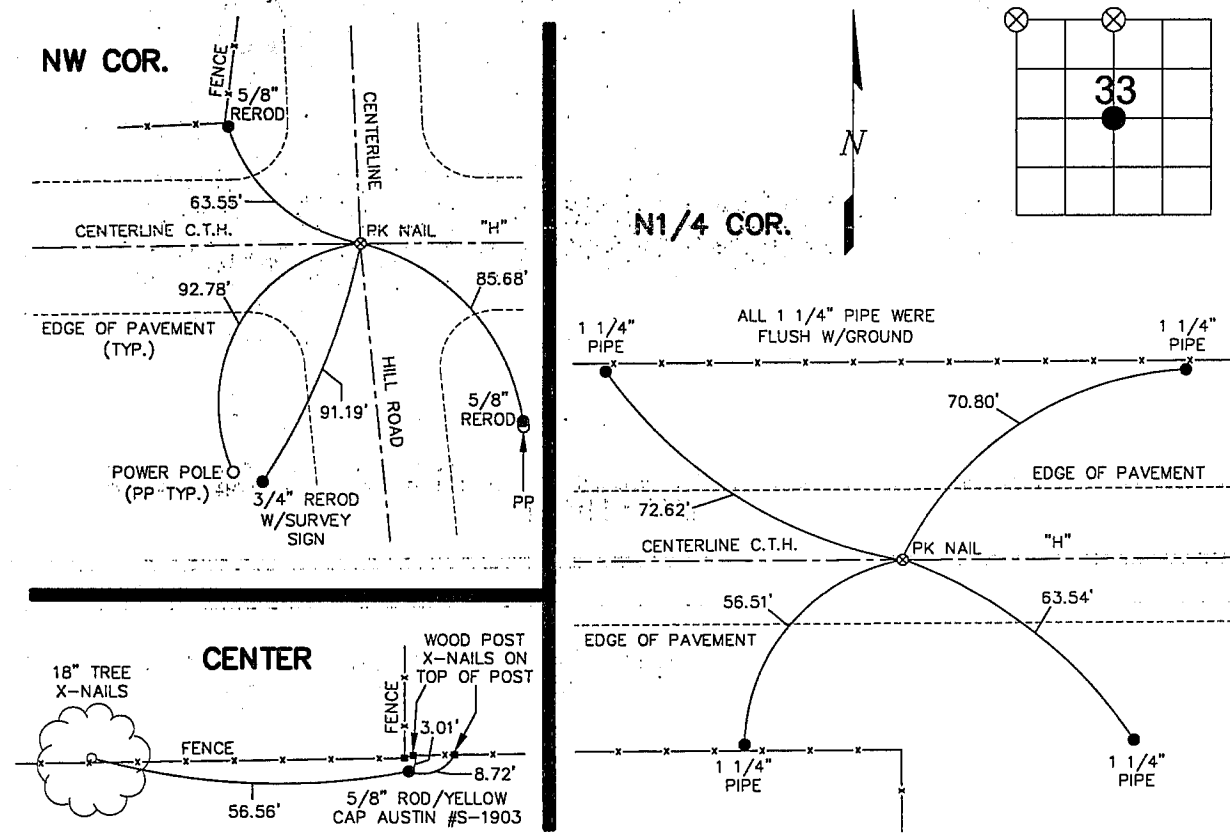
Land Survey Monuments situated in Section 33, Township 2N, Range 1W, of the Fourth Principal Meridian, GRANT County, Wisconsin. Previously recorded in \_\_\_\_\_ in County Recorder's Office.  
(book, page, document number, etc.)

(Show reason for preparing this certificate, the evidence and detailed procedures used in establishing the corner positions and monumentation found or placed.)

Monument Description and Remarks: FOUND PK NAIL @ THE NW CORNER IN ASPHALT.  
FOUND PK NAIL @ THE N1/4 CORNER IN ASPHALT. ASPHALT WAS PARTIALLY CHIPPED AWAY.  
FOUND 5/8" ROD/YELLOW CAP (AUSTIN #S-1903) @ THE CENTER. EXPOSED 2".

**PLAN - VIEW**

(Show a minimum of three reference ties to durable physical objects, relevant monuments and physical conditions that will enable recovery of the corner.)



I, HEREBY CERTIFY THAT THIS LAND SURVEYING DOCUMENT WAS PREPARED AND THE RELATED SURVEY WORK WAS PERFORMED BY ME OR UNDER MY DIRECT PERSONAL SUPERVISION AND THAT I AM A DULY LICENSED LAND SURVEYOR UNDER THE LAWS OF THE STATE OF WISCONSIN.  
 John L. White  
 JOHN L. WHITE  
 LICENSE NUMBER S-1401  
 MY LICENSE RENEWAL DATE IS DECEMBER 31, 2004

Corners	List Corners to be Indexed		
	Section	Twp	Range
NW COR.	33	2N	1W
N1/4 COR.	33	2N	1W
CENTER	33	2N	1W

<b>BUESING &amp; ASSOCIATES</b> CONSULTING ENGINEERS 1212 LOCUST STREET DUBUQUE, IOWA 52001 (563) 556-4389	MONUMENT RECORD		
	COUNTY: <u>GRANT</u> TOWNSHIP: <u>SMELSER</u>		
DATE PLOTTED: 1-2-04	FIELD BOOK # _____	DRAWING # 03239-ST	
DATE REVISED: _____	PAGE # _____	FIELD SURVEY	