

U.S. PUBLIC LAND SURVEY MONUMENT RECORD - GRANT COUNTY, WI

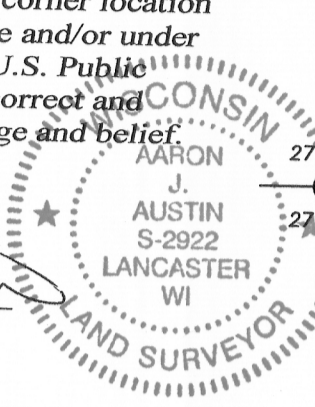
Section 26, Town 2 North Range 1 West, Town of Smelser

CERTIFICATE:

I, Aaron J. Austin, Wisconsin Professional Land Surveyor, do hereby certify that the corner location on this record was determined by me and/or under my direct supervision and that this U.S. Public Land Survey Monument Record is correct and complete to the best of my knowledge and belief.

Dated this 28th day of March, 2016.

Aaron J. Austin
 Aaron J. Austin, S-2922



26

● = CORNER LOCATION

GRANT COUNTY COORDINATES
 NAD 83 (2011 ADJUSTMENT)
 N: 439,583.95 E: 885,118.49

HISTORY OF CORNER ESTABLISHMENT:

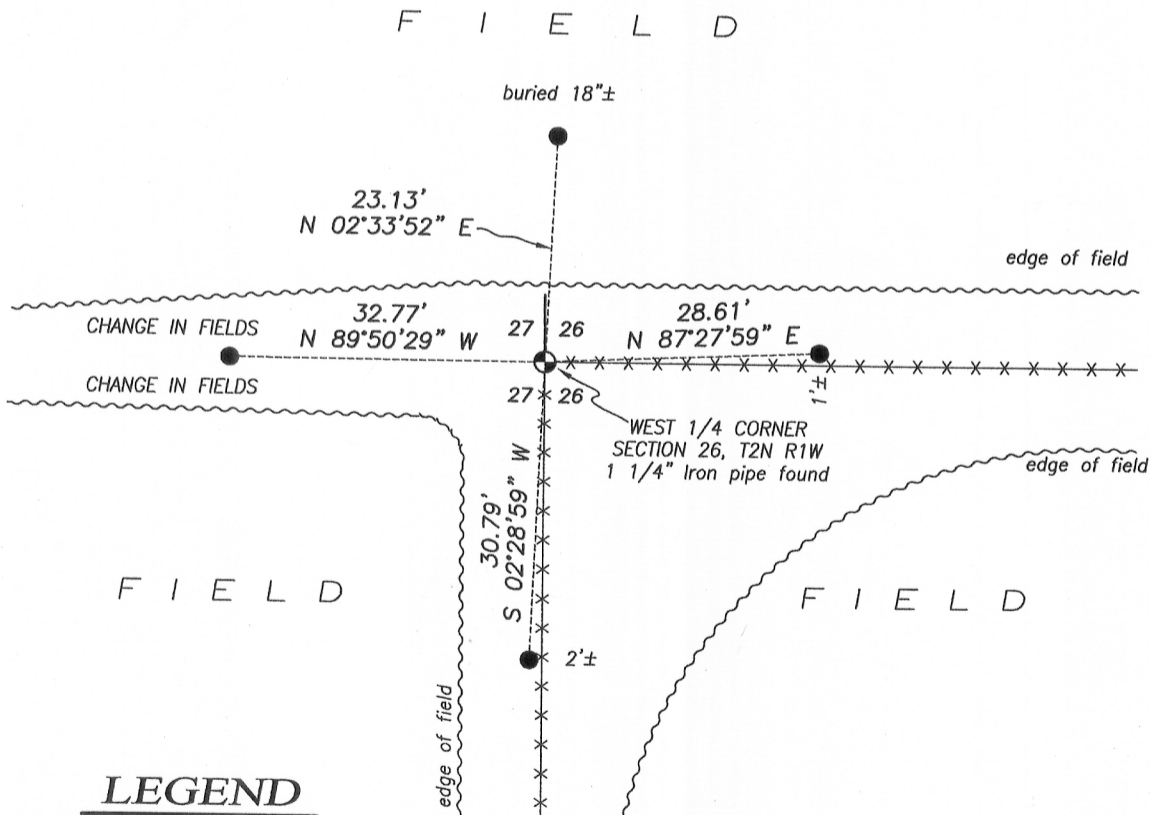
1832-Lucius Lyon set the original corner.
 2009-Danial Paulson tied to the corner on a Surveys filed in Book 26, Pages 22, 23, 24, 25, 26, 27, 28 and 29.

DESCRIPTION OF CORNER EVIDENCE FOUND:

I found the 1 1/4" iron pipe as shown on Paulson's surveys. I set 4 witness corners after I verified its location with G.P.S. methods to other area corners.

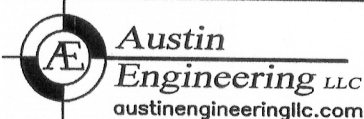
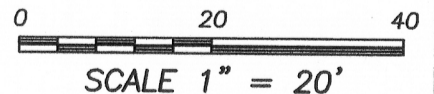
DESCRIPTION OF CORNER AND WITNESS MONUMENTS, references and accessories used to perpetuate the original or re-established location of this corner. Witnesses to corner location S.W. Austin, T.J. Austin.

SKETCH:



LEGEND

- ⊕ Section Corner—as designated
- 1/2" x 12" Rebar set
- x-x- Existing fence



4211 HWY 81 E, LANCASTER, WI 53813
 PHONE: 608-723-6363 FAX: 608-723-6702

JOB NO: 16s040
 H:\CRD\16s040
 H:\TIE\T2NR1W\98

FIELDBOOK: TDSR
 DRAWN BY: AJ AUSTIN
 CREW: SW AUSTIN, TJ AUSTIN

APR 15 2016