

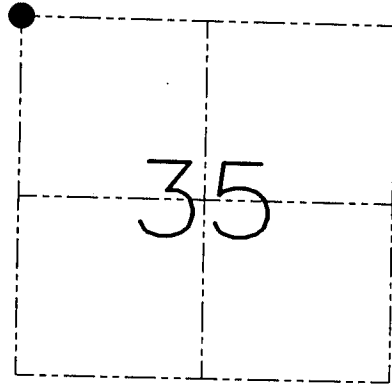
U.S. PUBLIC LAND SURVEY MONUMENT RECORD - GRANT COUNTY, WI
 Section 35, Town 2 North Range 1 West, Town of Smelser

CERTIFICATE

I, Larry L. Austin, do hereby certify that the corner location on this record was determined by me and/or under my direct supervision and that this U.S. public land survey monument record is correct and complete to the best of my knowledge and belief.

Dated this 12th day of December, 2001

Larry L. Austin
 Larry L. Austin S-1903



● = CORNER LOCATION

HISTORY OF CORNER ESTABLISHMENT

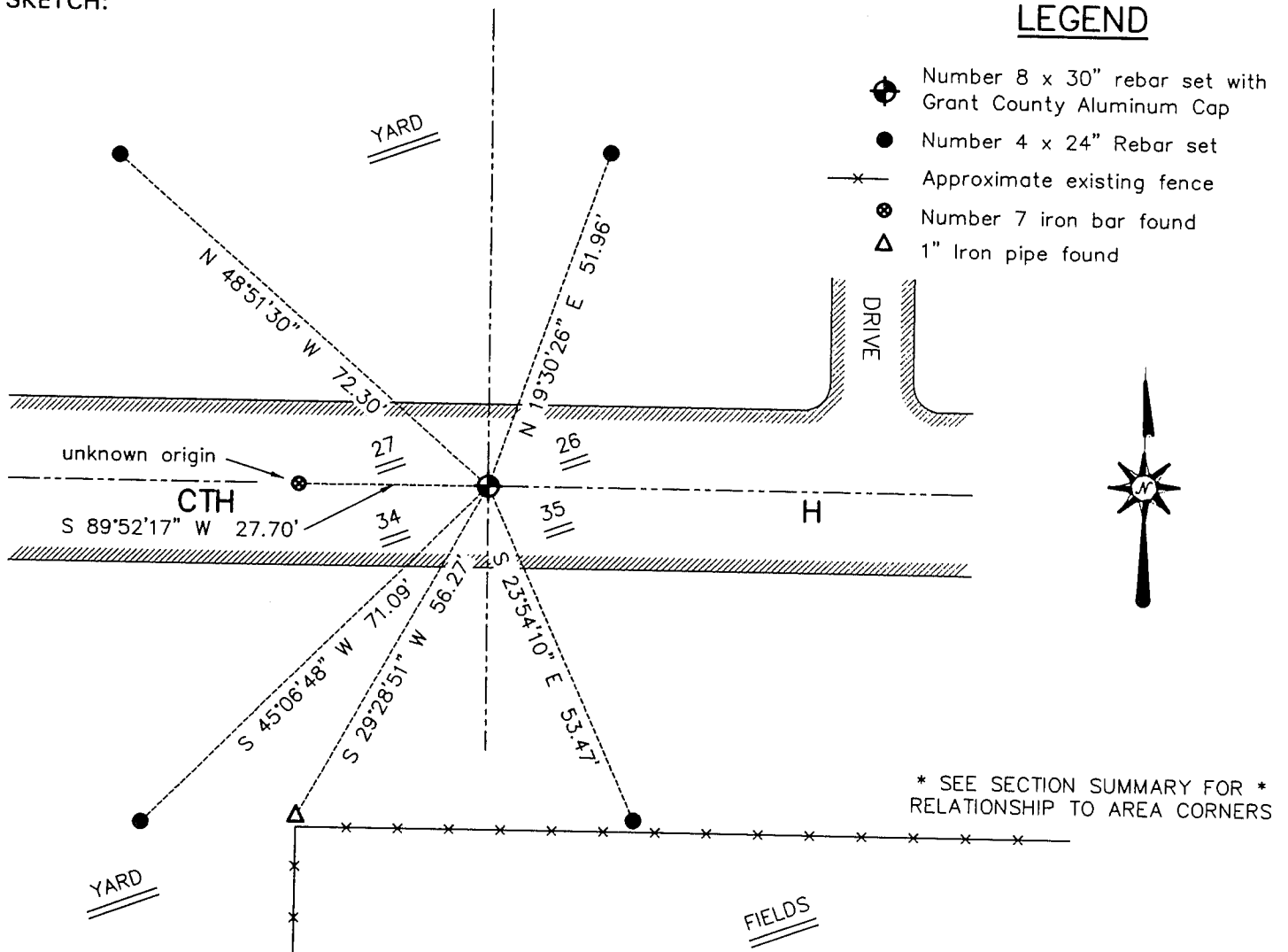
Corner was originally set in 1832 by Lucius Lyon. In March 2001 I found a #7 iron bar and fence South and accepted it.

DESCRIPTION OF CORNER EVIDENCE FOUND

I found the #7 iron bar and did not accept it's location. After an extensive research of the deeds of adjoining landowners, I reestablished the corner location proportionately between the North 1/4 of Section 34 and the Northeast corner of Section 35. This location fit local occupation and deed evidence. Verified this new location using EDM & GPS methods.

DESCRIPTION OF CORNER AND WITNESS MONUMENTS, references and accessories used to perpetuate the original or re-established location of this corner. Witnesses to the corner location Bobby Sedgwick & Shane Austin & Shelby Blindert

SKETCH:



SKETCH NOT TO SCALE

AUSTIN ENGINEERING, LLC

4211 HWY 81 EAST, LANCASTER, WI 53813
 PHONE 608-723-6363 FAX 608-723-6702

FIELDBOOK: SDR33, 2122
 G: \T1NR1W\15
 C: \SWA\TIE\T2NR1W\105
 CREW: BS-SB-SA

DRAWN BY: SW AUSTIN
 APPROVED: LL AUSTIN

CORNER NUMBER 105