

GRANT COUNTY CERTIFIED LAND CORNER

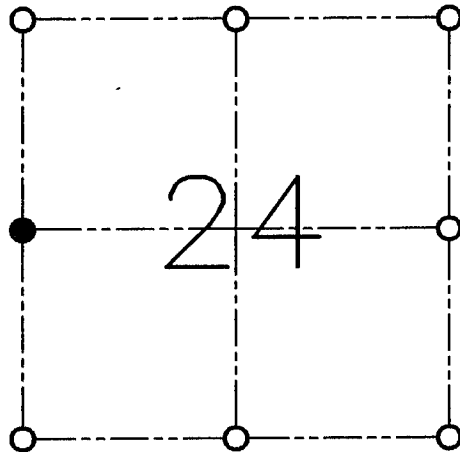
CORNER NO. 79

CERTIFICATE:

I, LARRY L. AUSTIN, DO HEREBY CERTIFY THAT ON TWENTY-NINTH DAY OF APRIL, 1999, I FOUND OCCUPATIONAL EVIDENCE OF THE WEST 1/4 OF SECTION 24, TOWN 2 NORTH, RANGE 1 WEST, OF THE FOURTH PRINCIPAL MERIDIAN, AND I RE-ESTABLISHED SAID CORNER ACCORDING TO THE WISCONSIN STATUTES AS SHOWN AND DESCRIBED HEREON.

DATED THIS NINETEENTH DAY OF MAY, 1999

Larry L. Austin
LARRY L. AUSTIN S-1903



● = CORNER LOCATION

**WEST 1/4 CORNER OF
SECTION 24, T 2 N R 1 W
TOWN OF SMELSER**

HISTORY OF ORIGINAL CORNER ESTABLISHMENT:

CORNER WAS SET IN 1832 BY LUCIUS LYON. IN 1995 I SET THE CORNER.

DESCRIPTION OF CORNER EVIDENCE FOUND:

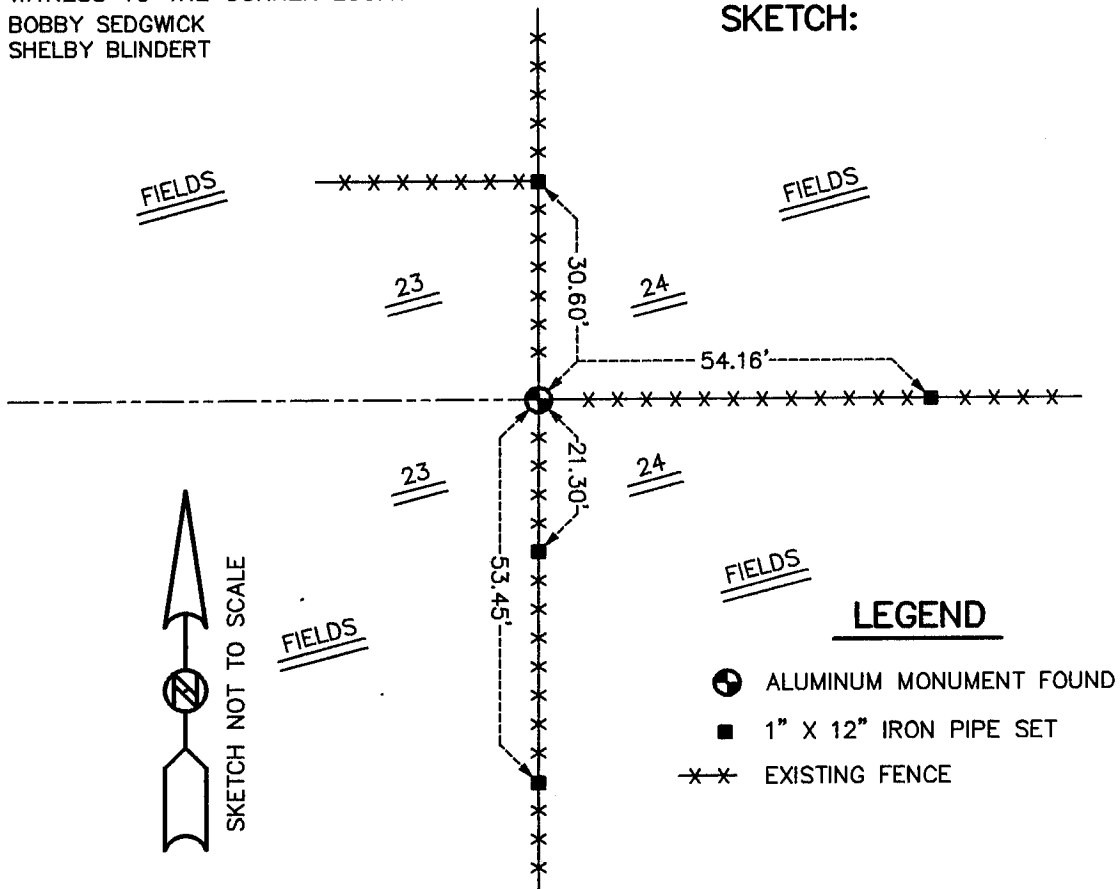
I FOUND THE CORNER I SET IN 1995. I ACCEPTED THIS LOCATION AFTER AN E.D.M. TRAVERSE OF THE AREA.

DESCRIPTION OF CORNER AND WITNESS MONUMENTS, REFERENCES AND ACCESSORIES USED TO PERPETUATE THE ORIGINAL OR RE-ESTABLISHED LOCATION OF THIS CORNER:

WITNESS TO THE CORNER LOCATION:

BOBBY SEDGWICK
SHELBY BLINDERT

SKETCH:



LEGEND

- ALUMINUM MONUMENT FOUND
- 1" X 12" IRON PIPE SET
- x-x- EXISTING FENCE