

GRANT COUNTY CERTIFIED LAND CORNER

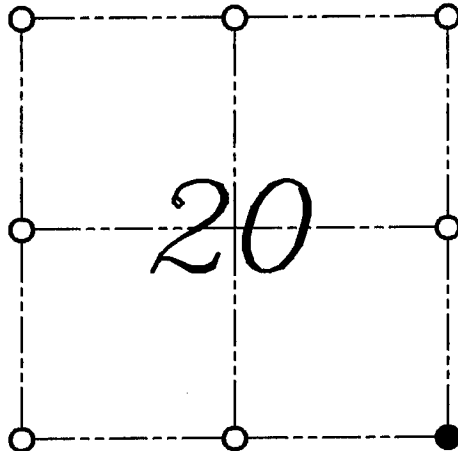
CORNER NUMBER 89

CERTIFICATE:

I, LARRY L. AUSTIN, DO HEREBY CERTIFY THAT ON ELEVENTH DAY OF SEVENTH, 1998, I FOUND OCCUPATIONAL EVIDENCE OF THE SOUTHEAST CORNER OF SECTION 20, TOWN 2 NORTH, RANGE 1 WEST, OF THE FOURTH PRINCIPAL MERIDIAN, AND I RE-ESTABLISHED SAID CORNER ACCORDING TO THE WISCONSIN STATUTES AS SHOWN AND DESCRIBED HEREON.

DATED THIS FIFTEENTH DAY OF JULY, 1998

Larry L. Austin
LARRY L. AUSTIN S-1903



● = CORNER LOCATION
SOUTHEAST CORNER
SECTION 20, T 2 N R 1 W
TOWN OF SMELSER

HISTORY OF ORIGINAL CORNER ESTABLISHMENT:

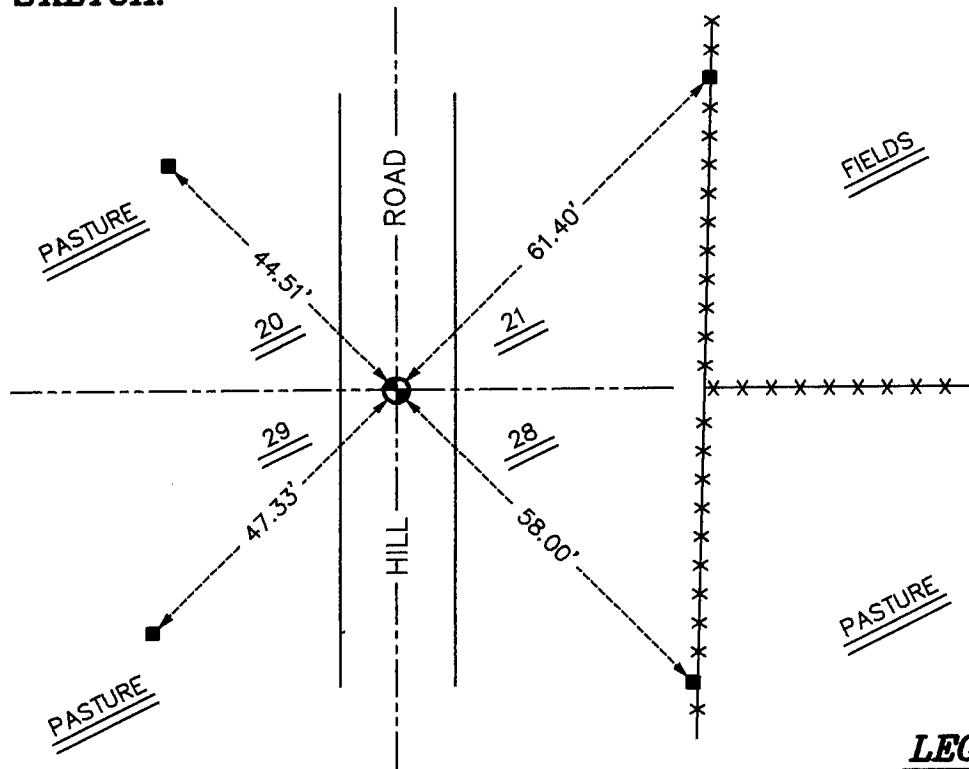
CORNER WAS SET IN 1832 BY LUCIUS LYON.

DESCRIPTION OF CORNER EVIDENCE FOUND:

I FOUND A NAIL AT THIS LOCATION 6" UNDER THE SURFACE OF THE ROAD.
I ACCEPTED THIS LOCATION AFTER VERIFICATION TO OTHER AREA CORNERS.
VERIFIED THIS LOCATION USING E.D.M. AND G.P.S. METHODS.

DESCRIPTION OF CORNER AND WITNESS MONUMENTS, REFERENCES AND ACCESSORIES USED TO PERPETUATE THE ORIGINAL OR RE-ESTABLISHED LOCATION OF THIS CORNER:
WITNESS TO THE CORNER LOCATION: BOBBY SEDGWICK ; SHELBY BLINDERT

SKETCH:



LEGEND

- ⊕ NUMBER 8 X 30" REBAR SET WITH GRANT COUNTY ALUMINUM CAP
- NUMBER 4 X 24" REBAR SET WITH RED PLASTIC CAP
- *-* EXISTING FENCE LOCATION