

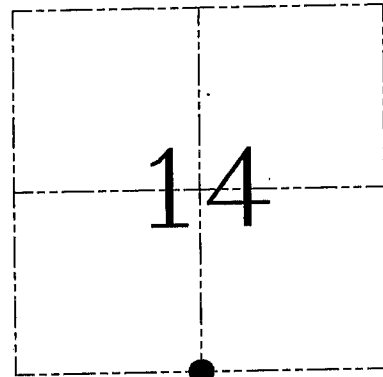
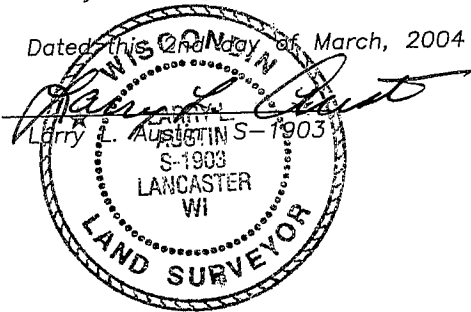
U.S. PUBLIC LAND SURVEY MONUMENT RECORD – GRANT COUNTY, WI

Section 14, Town 2 North Range 1 West, Town of Smelser

CERTIFICATE

I, Larry L. Austin, do hereby certify that the corner location on this record was determined by me and/or under my direct supervision and that this U.S. public land survey monument record is correct and complete to the best of my knowledge and belief.

Dated this 2nd day of March, 2004



● = CORNER LOCATION

HISTORY OF CORNER ESTABLISHMENT

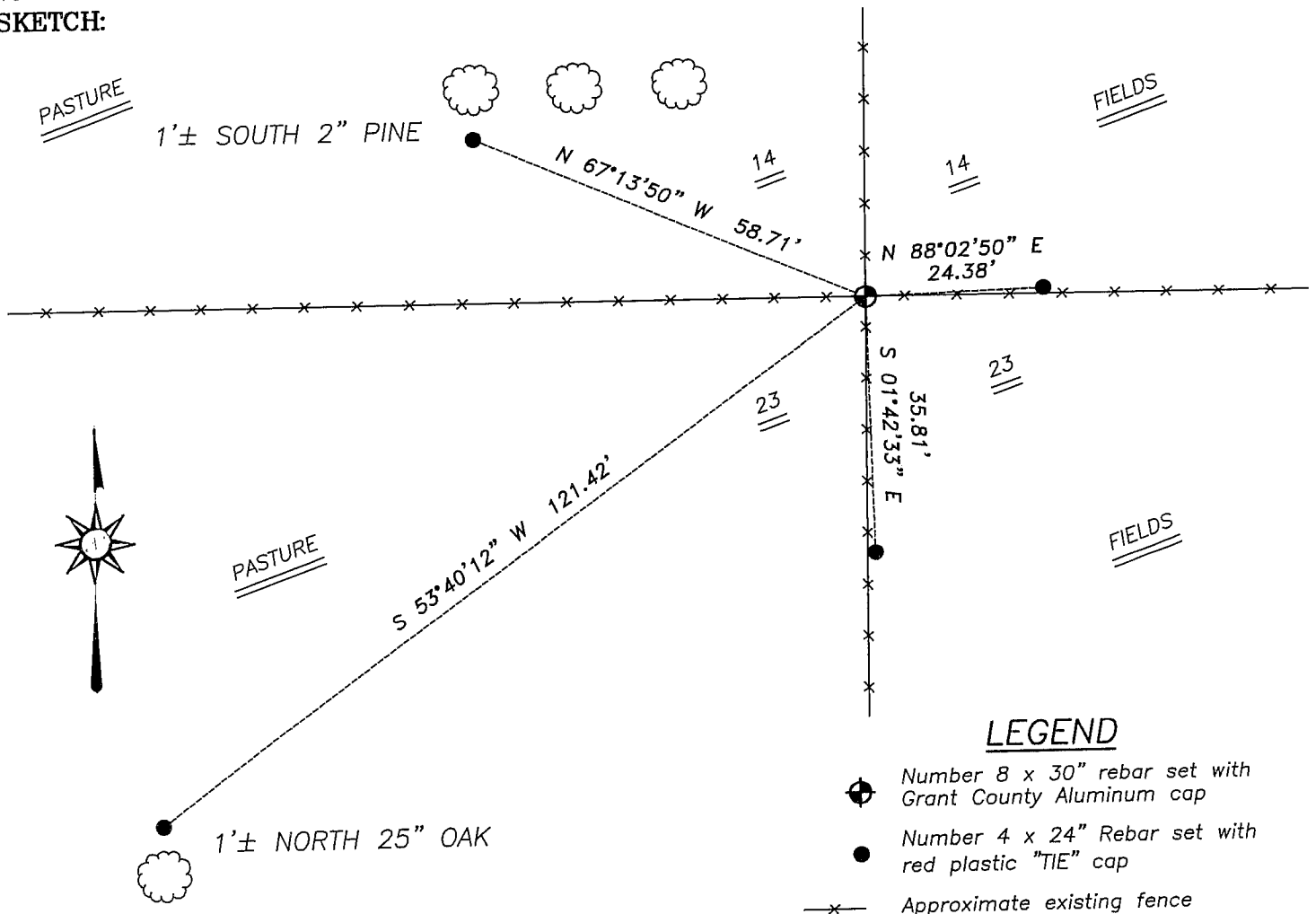
Corner was originally set in 1832 by Lyon. In 1854 Overton found the original corner. No other record of the corner was found.

DESCRIPTION OF CORNER EVIDENCE FOUND

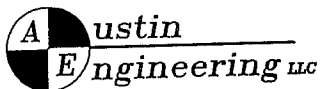
I found an existing occupied fence corner and accepted it's location after an EDM & GPS traverse of the area.

DESCRIPTION OF CORNER AND WITNESS MONUMENTS, references and accessories used to perpetuate the original or re-established location of this corner. Witnesses to corner location Bobby Sedgwick & Shelby Blindert & Brad Digman

SKETCH:



SKETCH NOT TO SCALE



4211 HWY 81 E, LANCASTER, WI 53813
PHONE 608-723-6363 FAX 608-723-6702

JOB NUMBER 03S344
FIELDBOOK: TSDR, 2307
G:\T2NR1W\T2NR1W
H:\TIE\T2NR1W\64

DRAWN BY: SW AUSTIN
APPROVED: LL AUSTIN