

GRANT COUNTY CERTIFIED LAND CORNER

CORNER NO. 63

CERTIFICATE:

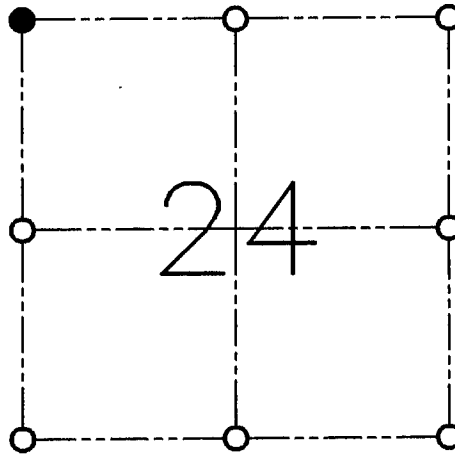
I, LARRY L. AUSTIN, DO HEREBY CERTIFY THAT ON TWENTY-NINTH DAY OF APRIL, 1999, I FOUND OCCUPATIONAL EVIDENCE OF THE NORTHWEST CORNER OF SECTION 24, TOWN 2 NORTH, RANGE 1 WEST, OF THE FOURTH PRINCIPAL MERIDIAN, AND I RE-ESTABLISHED SAID CORNER ACCORDING TO THE WISCONSIN STATUTES AS SHOWN AND DESCRIBED HEREON.

DATED THIS NINETEENTH DAY OF MAY, 1999

Larry L. Austin
LARRY L. AUSTIN S-1903



SEAL



● = CORNER LOCATION

**NORTHWEST CORNER
SECTION 24, T 2 N R 1 W
TOWN OF SMELSER**

HISTORY OF ORIGINAL CORNER ESTABLISHMENT:

CORNER WAS SET IN 1832 BY LUCIUS LYON.

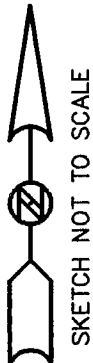
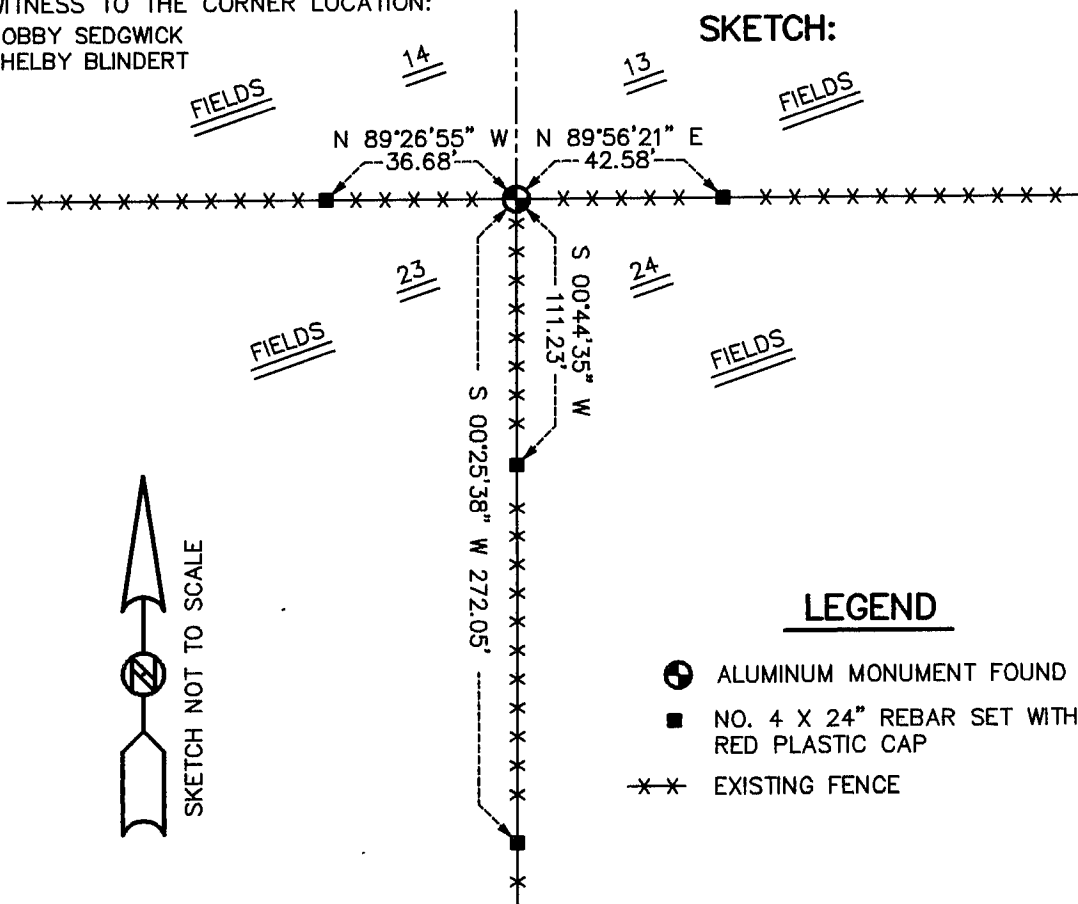
DESCRIPTION OF CORNER EVIDENCE FOUND:

I FOUND AN ALUMINUM MONUMENT AT AN OCCUPIED FENCE CORNER.
I ACCEPTED THIS LOCATION AFTER AN E.D.M. TRAVERSE OF THE AREA.

DESCRIPTION OF CORNER AND WITNESS MONUMENTS, REFERENCES AND ACCESSORIES USED TO PERPETUATE THE ORIGINAL OR RE-ESTABLISHED LOCATION OF THIS CORNER:

WITNESS TO THE CORNER LOCATION:
BOBBY SEDGWICK
SHELBY BLINDERT

SKETCH:



LEGEND

- ALUMINUM MONUMENT FOUND
- NO. 4 X 24" REBAR SET WITH RED PLASTIC CAP
- *—*—* EXISTING FENCE