

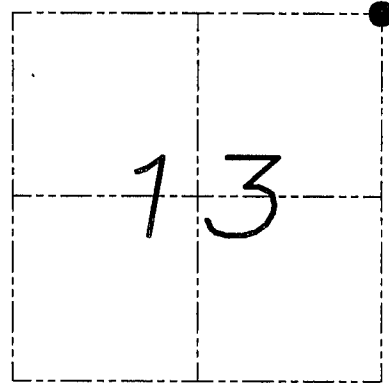
U.S. PUBLIC LAND SURVEY MONUMENT RECORD

Section 13, Town 2 North Range 1 West, Town of Smelser, Grant County, Wisconsin

CERTIFICATE

I, Larry L. Austin, do hereby certify that the corner location on this record was determined by me and/or under my direct supervision and that this U.S. public land survey monument record is correct and complete to the best of my knowledge and belief.

Larry L. Austin 10.15.08
 Larry L. Austin, S. 1003 LANCASTER WI date



● = CORNER LOCATION

HISTORY OF CORNER

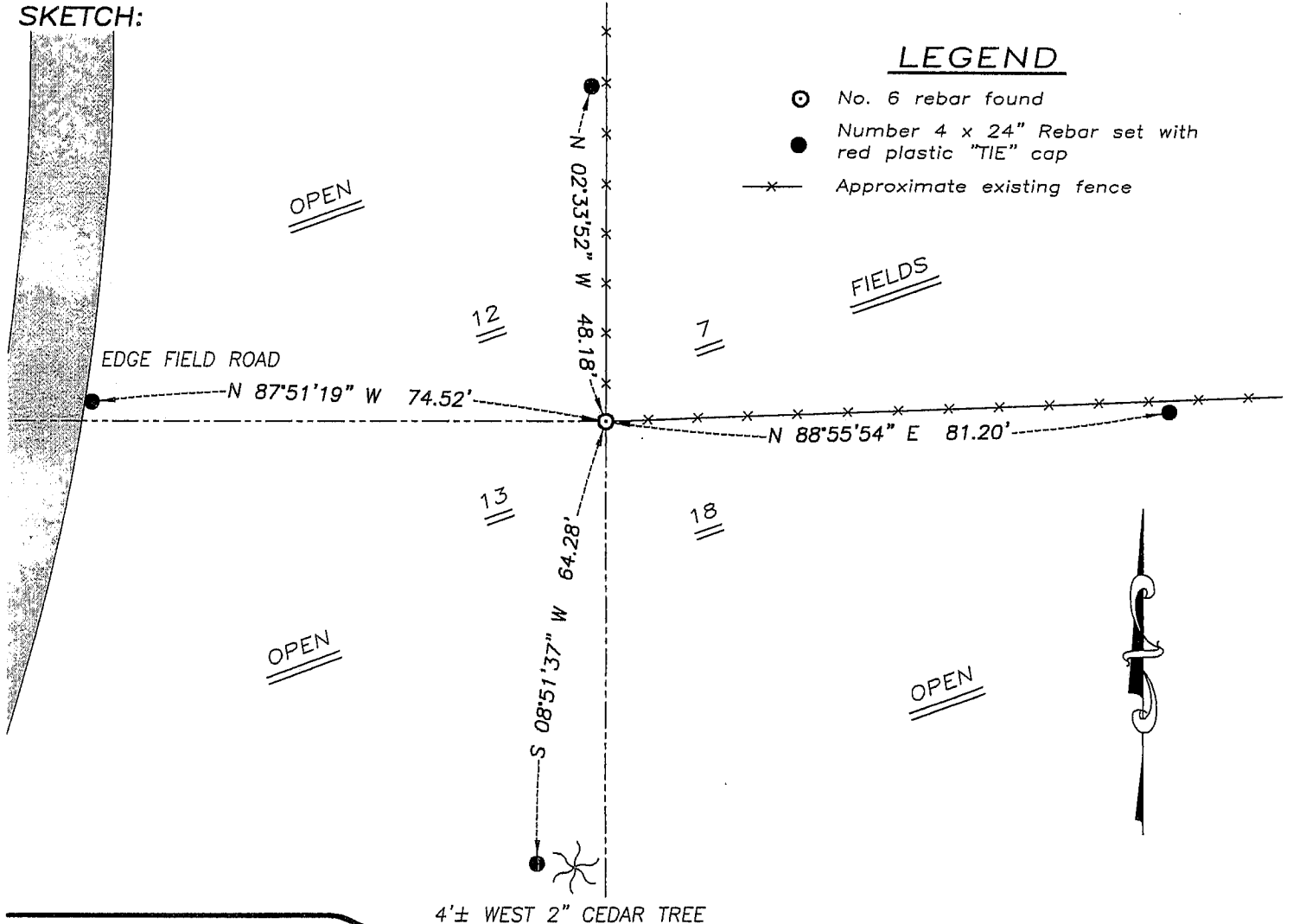
Corner was originally set by Lyon. In 1999 Stan King referenced to the corner on CSM #537. No other record of the corner was found.

CORNER EVIDENCE FOUND

I found a #6 iron bar at an occupied fence corner. I accepted it's location after an EDM & GPS traverse of the area.

DESCRIPTION OF CORNER AND WITNESS MONUMENTS, references and accessories used to perpetuate the original or re-established location of this corner. Witnesses to monument location Bobby Sedgwick & Brad Digman & Shelby Blindert

SKETCH:



LEGEND

- No. 6 rebar found
- Number 4 x 24" Rebar set with red plastic "TIE" cap
- x— Approximate existing fence



4'± WEST 2" CEDAR TREE

NOT TO SCALE



Austin Engineering LLC

4211 HWY 81 E, LANCASTER, WI 53813
 PHONE 608-723-6363 FAX 608-723-6702

JOB NUMBER 08S161
 FIELDBOOK: TDSR, 2811
 G:\T2NR1W\T2NR1W
 H:\TIE\T2NR1W\41

DRAWN BY: SW AUSTIN
 APPROVED: LL AUSTIN