

U.S. PUBLIC LAND SURVEY MONUMENT RECORD

Section 14, Town 2 North Range 1 West, Town of Smelser, Grant County, Wisconsin

CERTIFICATE

I, Larry L. Austin, do hereby certify that the corner location on this record was determined by me and/or under my direct supervision and that this U.S. public land survey monument record is correct and complete to the best of my knowledge and belief.



● = CORNER LOCATION

Larry L. Austin
Larry L. Austin, S-1903



HISTORY OF CORNER

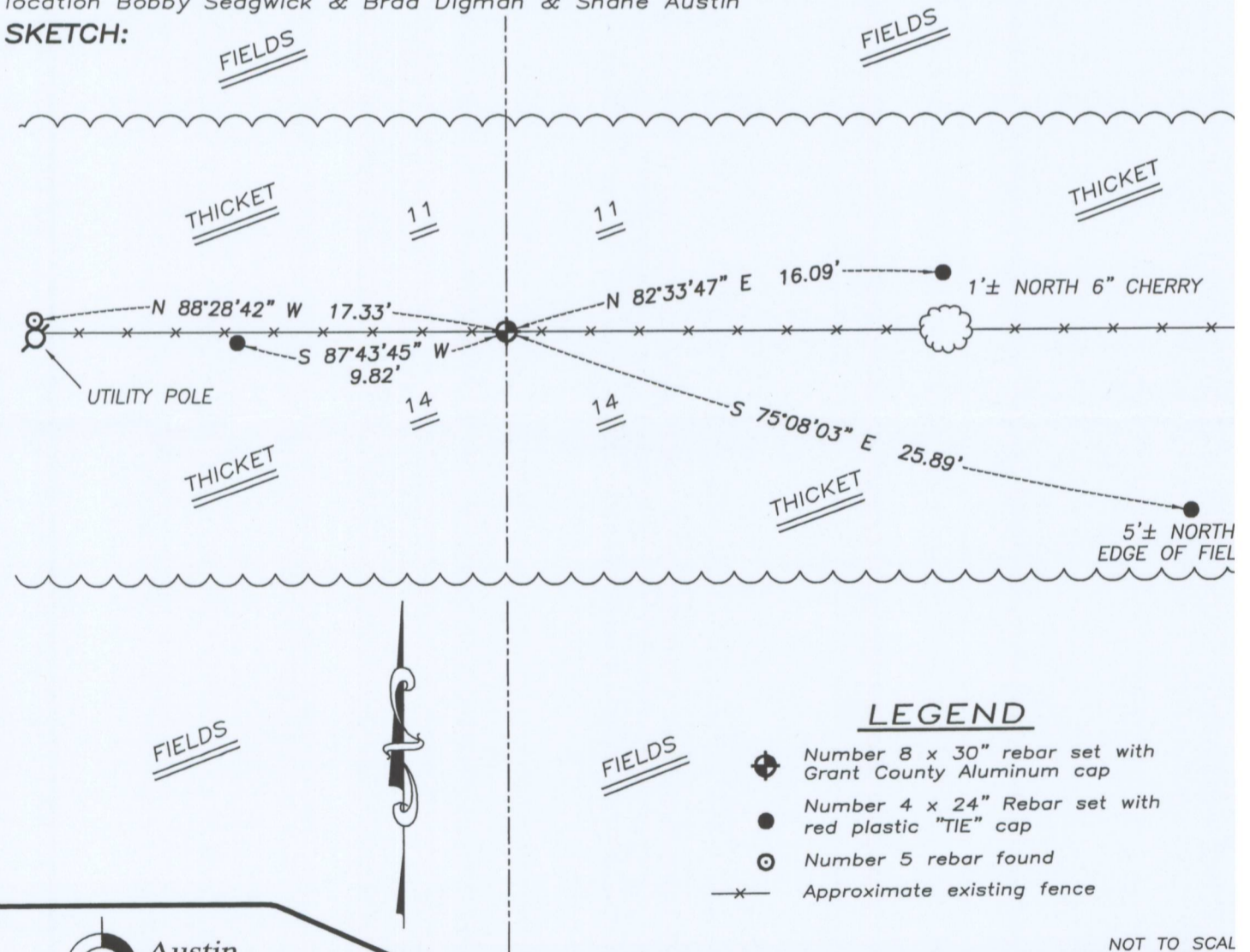
Corner was originally set in 1832 by Lyon. In 1847 Stuntz tied to the corner with no mention of monument. No other record of the corner was found.

CORNER EVIDENCE FOUND

I set the corner in an East-West fence for Northing. Easting was established proportionately between the Northwest and Northeast corners. Verified this location using EDM & GPS methods.

DESCRIPTION OF CORNER AND WITNESS MONUMENTS, references and accessories used to perpetuate the original or re-established location of this corner. Witnesses to monument location Bobby Sedgwick & Brad Digman & Shane Austin

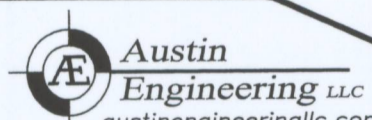
SKETCH:



LEGEND

- ⊕ Number 8 x 30" rebar set with Grant County Aluminum cap
- Number 4 x 24" Rebar set with red plastic "TIE" cap
- ⊙ Number 5 rebar found
- x- Approximate existing fence

NOT TO SCALE



Austin Engineering LLC
austinengineeringllc.com
4211 HWY 81 E, LANCASTER, WI 53813
PHONE: 608-723-6363 FAX: 608-723-6702

JOB NUMBER 09S176-STEINHART
FIELDBOOK: TDSR, 2901
G:\T2NR1W\T2NR1W
H:\TIE\T2NR1W\44

DRAWN BY: SW AUSTIN
APPROVED: LL AUSTIN