

# U.S. PUBLIC LAND SURVEY MONUMENT RECORD - GRANT COUNTY, WI

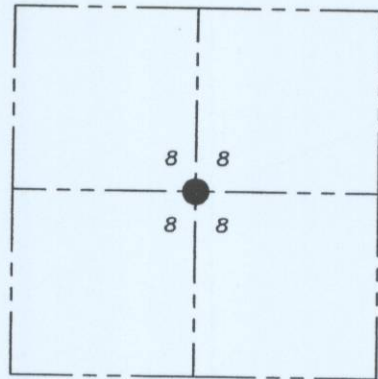
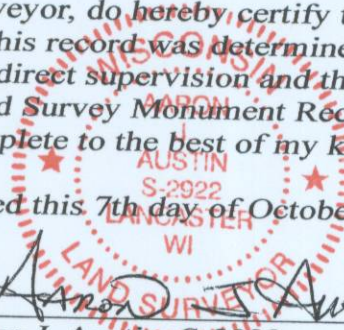
Section 8, Town 2 North Range 1 West, Town of Smelser.

**CERTIFICATE:**

I, Aaron J. Austin, Wisconsin Professional Land Surveyor, do hereby certify that the corner location on this record was determined by me and/or under my direct supervision and that this U.S. Public Land Survey Monument Record is correct and complete to the best of my knowledge and belief.

Dated this 7th day of October, 2015.

*Aaron J. Austin*  
 Aaron J. Austin, S-2922



● = CORNER LOCATION

**HISTORY OF CORNER ESTABLISHMENT:**

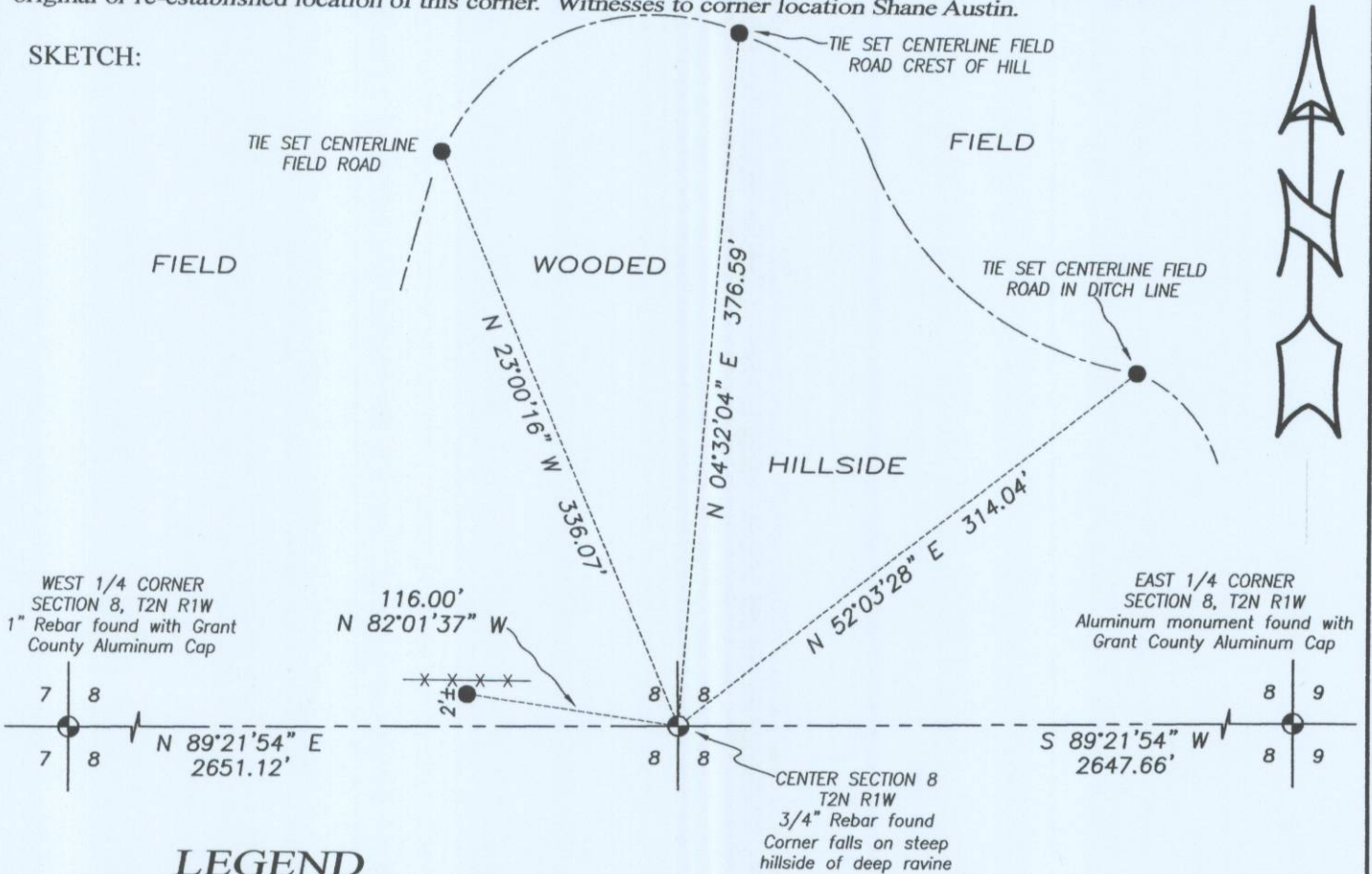
- Corner was not set with Original Survey
- 1852-Everett set the corner on a Survey in Book B, Page 290.
- 1854-Overton tied to the corner on a Survey in Book B, Page 350 and 351.
- 1997-Larry Austin reset the corner on a Survey in Book 1, Page 9.
- 2008-Larry Austin tied to the corner on a Survey in Book 23, Page 93.
- 2008-Larry Austin tied to the corner on Surveys in Book 24, Page 15, 19 and 21.

**DESCRIPTION OF CORNER EVIDENCE FOUND:**

The dimensions of Larry Austin's surveys in Book 1, Page 9; Book 7, Page 58; Book 11, Page 63 do not coincide with the found 3/4" Rebar. This rebar does match those surveys filed in Book 16, Page 83; Book 23, Page 93; Book 24, Page 15; Book 24, Page 19; Book 24, Page 21; I accepted the rebar location after verification to the East 1/4 corner, North 1/4 corner and West 1/4 corner of Section 8 and dimensions of those surveys mentioned above. I set 4 witness corners and verified this location with G.P.S. and E.D.M. methods.

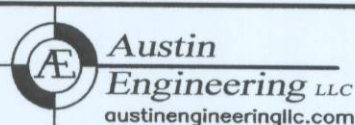
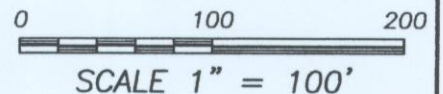
**DESCRIPTION OF CORNER AND WITNESS MONUMENTS, references and accessories used to perpetuate the original or re-established location of this corner. Witnesses to corner location Shane Austin.**

**SKETCH:**



**LEGEND**

- ⊙ Section Corner - as designated
- 1/2" x 12" Rebar set with red plastic "TIE" cap
- x-x- Approximate existing fence



4211 HWY 81 E, LANCASTER, WI 53813  
 PHONE: 608-723-6363 FAX: 608-723-6702

JOB NO: 15s208  
 H:CRD\15s208  
 H:\TIE\T2NR1W\35.5

FIELDBOOK: TDSR  
 DRAWN BY: AJ AUSTIN  
 CREW: SW AUSTIN

35.5

OCT 16 2015