

U.S. PUBLIC LAND SURVEY MONUMENT RECORD – GRANT COUNTY, WI

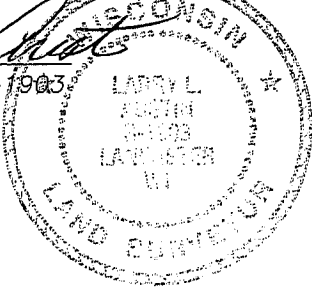
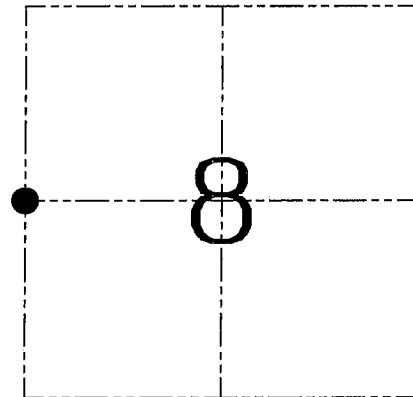
Section 8, Town 2 North Range 1 West, Town of Smelser

CERTIFICATE

I, Larry L. Austin, do hereby certify that the corner location on this record was determined by me and/or under my direct supervision and that this U.S. public land survey monument record is correct and complete to the best of my knowledge and belief.

Dated this 28th day of March, 2005

Larry L. Austin
 Larry L. Austin S-1903

● = CORNER LOCATION

HISTORY OF CORNER ESTABLISHMENT

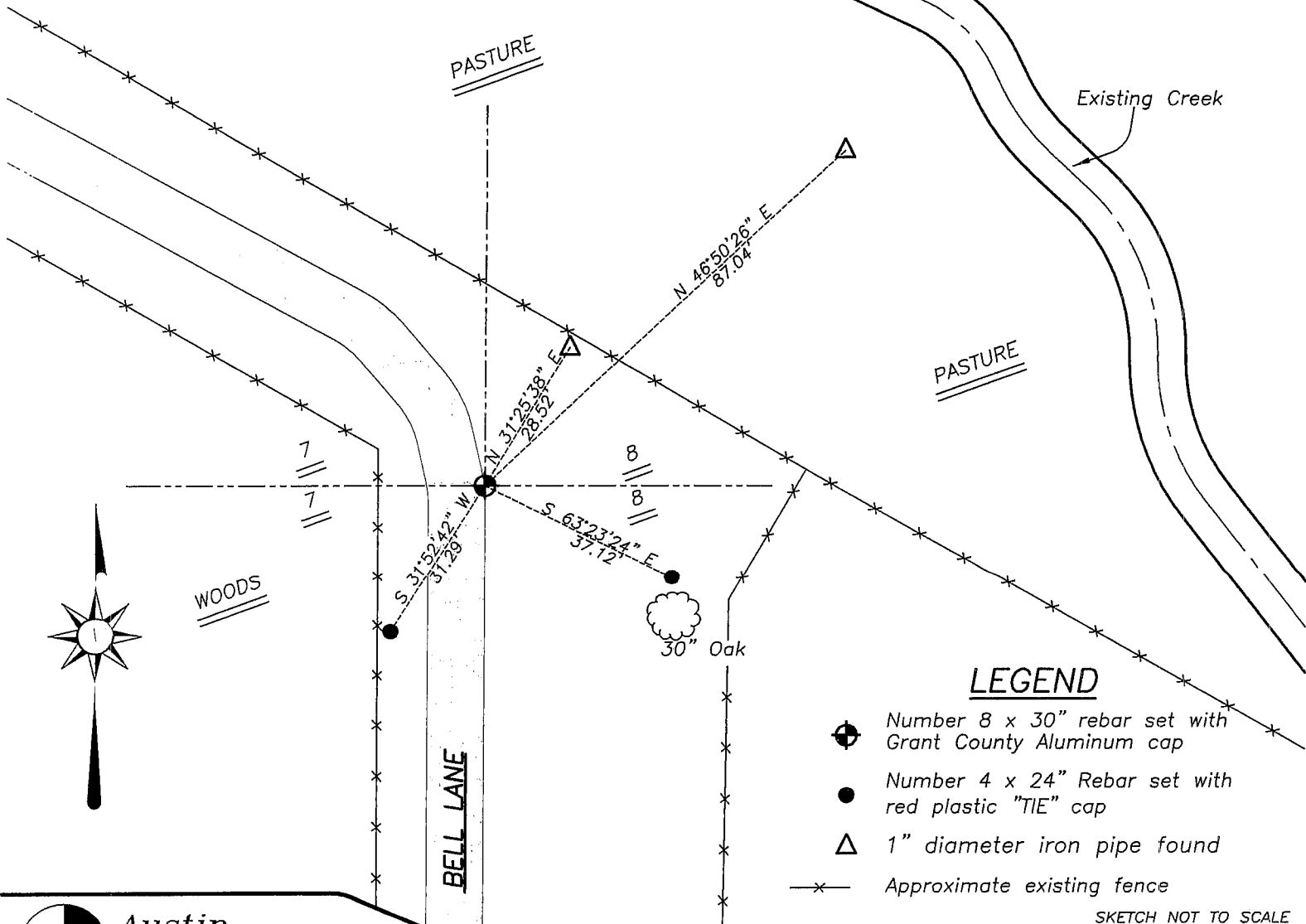
Corner was originally set in 1832 by Lyon.
 In 1995 I set a #6 Iron Bar at this location.
 No other records were found.

DESCRIPTION OF CORNER EVIDENCE FOUND

I found two ties and reset the corner based on the ties.
 Set two new ties and the corner as shown below.
 Verified location using EDM/GPS methods.

DESCRIPTION OF CORNER AND WITNESS MONUMENTS, references and accessories used to perpetuate the original or re-established location of this corner. Witnesses to corner location Bobby Sedgwick & Brad Digman & Shane Austin

SKETCH:



LEGEND

- Number 8 x 30" rebar set with Grant County Aluminum cap
- Number 4 x 24" Rebar set with red plastic "TIE" cap
- △ 1" diameter iron pipe found
- *— Approximate existing fence

SKETCH NOT TO SCALE

Austin Engineering LLC

JOB NUMBER 04S304
 FIELDBOOK: TDSR, 2510
 G:\T2NR1W\17
 H:\TIE\T2NR1W\35

DRAWN BY: BJ HAZEN
 APPROVED: LL AUSTIN

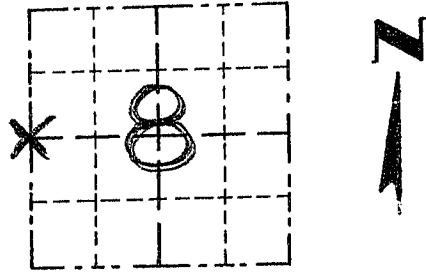
4211 HWY 81 E, LANCASTER, WI 53813
 PHONE 608-723-6363 FAX 608-723-6702

GRANT COUNTY

Survey Monument Record

TYPE OF MONUMENT 3/4" IRON BAR
 STATE PLANE COORDINATES: N _____
 E _____
 ELEVATION — M.S.L. DATUM: _____
 THETA ANGLE: _____
 FIELD BOOK: 94-18
 PAGE 29

CORNER NO. 35
 SECTION 8
 TOWN 2 N
 RANGE 1 W
 W 1/4 COR



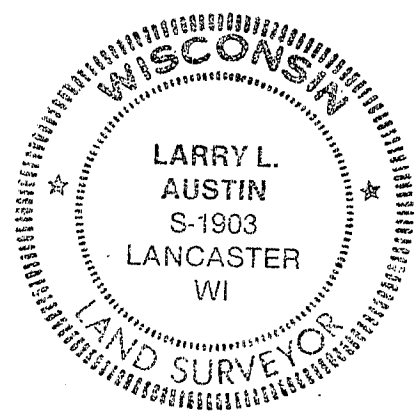
LOCATION
 (Indicated by "X")

BASIS FOR MONUMENT LOCATION

(Use reverse side if necessary)
 Show info such as: History of corner, with reference to Vol. and pg., dates, surveyor; exact description of monument replaced; if location computed, by taped or EDM traverse; landowner, remarks, etc.

ORIGINAL CORNER SET IN 1832 BY LUCIUS LYON; NO RECORD OF CORNER FOUND SINCE ORIGINAL SURVEYS; I BASED THE N-S LOCATION OF THE CORNER ON OCCUPATION LINE TO THE EAST & THE E-W LOCATION ON LINE BETWEEN NW CORNER & SW CORNER; VERIFIED BY EDM TRAVERSE OF THE AREA

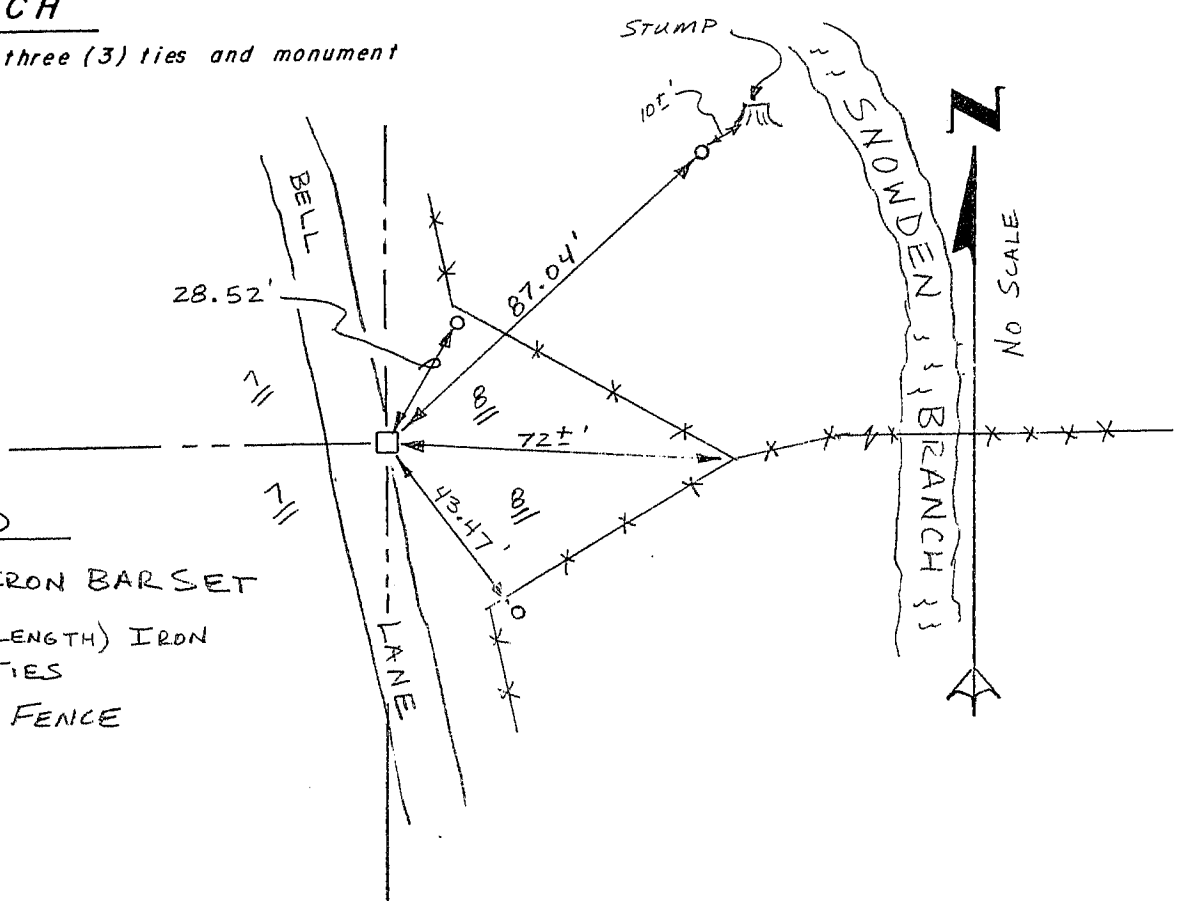
SEAL:



CERTIFIED CORRECT
Larry L. Austin
 Registered Land Surveyor
 DATE: 3-15-95

TIE SKETCH

Show at least three (3) ties and monument



LEGEND

- 3/4" x 24" IRON BAR SET
- 1" x 12" (MIN. LENGTH) IRON PIPE SET = TIES
- X-X EXISTING FENCE