

**U.S. PUBLIC LAND SURVEY MONUMENT RECORD - GRANT COUNTY, WI**

Section 5, Town 2 North Range 1 West, Town of Smelser.

**CERTIFICATE:**

I, Aaron J. Austin, Wisconsin Professional Land Surveyor, do hereby certify that the corner location on this record was determined by me and/or under my direct supervision and that this U.S. Public Land Survey Monument Record is correct and complete to the best of my knowledge and belief.

Dated this 7th day of October, 2015.

*Aaron J. Austin*  
 Aaron J. Austin, S-2922



HISTORY OF CORNER ESTABLISHMENT:

1832-Corner set by Lucius Lyon.

1852-Everett tied to the corner on a Survey filed in Book B, Page 290.

1853-Everett tied to the corner on a Survey filed in Book B, Page 318.

1854-Overton tied to the corner on a Survey filed in Book B, Page 351.

1994-Larry Austin reset the corner on a Survey filed in Book U, Page 57.

1994-Larry Austin reset the corner and filed a Grant County Survey Monument Record.

1997-Larry Austin tied to the corner on a Survey filed in Book Z, Page 16 and Book 1, Page 9.

1999-Larry Austin tied to the corner on a Survey filed in Book 5, Page 52.

2000-Larry Austin tied to the corner on a Survey filed in Book 7, Page 58.

2002-Larry Austin tied to the corner on a Survey filed in Book 6, Page 21; Book 6, Page 24; Book 11, Page 63.

2004-Larry Austin tied to the corner on Certified Survey Map No. 1096 and C.S.M. No. 1127.

2005-Larry Austin tied to the corner on a Survey filed in Book 16, Page 83.

2006-Larry Austin tied to the corner on Certified Survey Map No. 1217 and C.S.M. No. 1226.

2008-Larry Austin tied to the corner on a Survey filed in Book 23, Page 93 and Book 24, Page 19.

2009-Larry Austin tied to the corner on Certified Survey Map No. 1472.

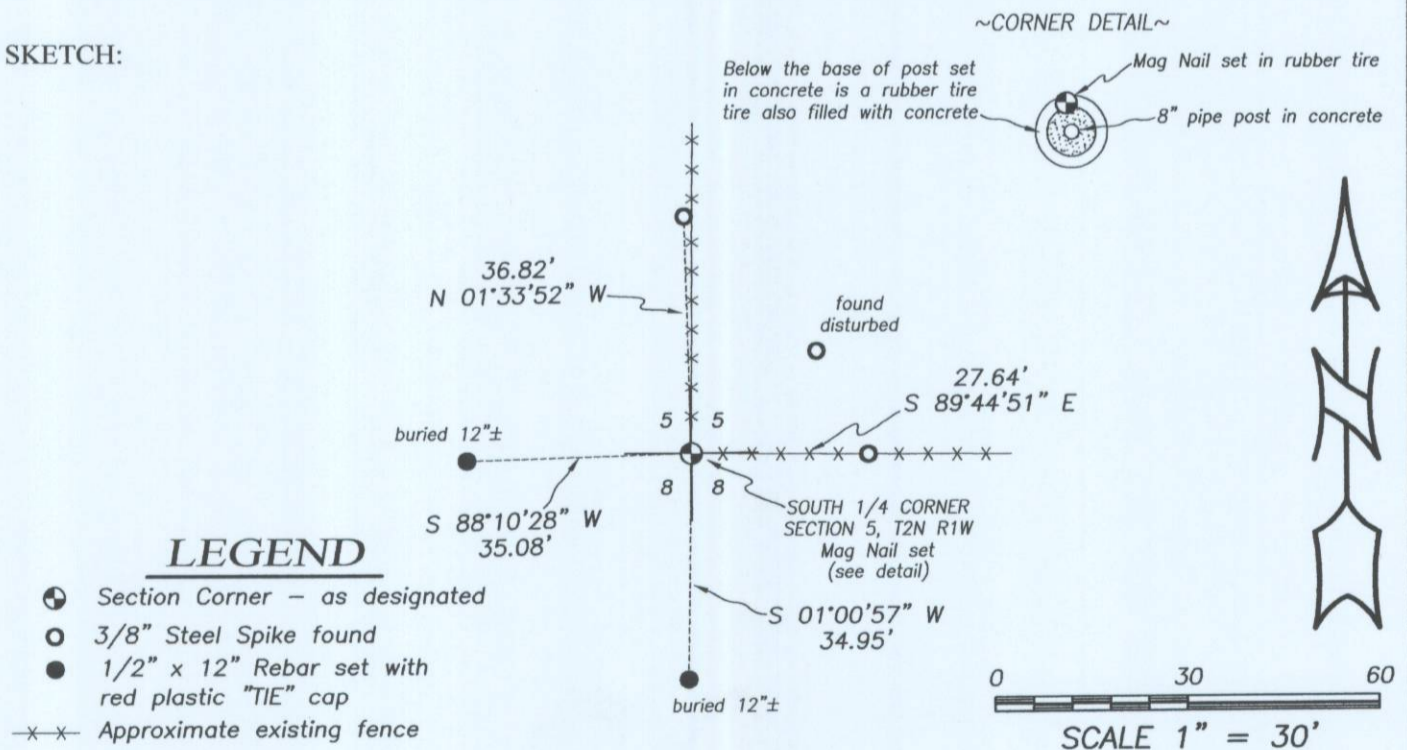
2013-Stan King tied to the corner on Certified Survey Map No. 1679.

DESCRIPTION OF CORNER EVIDENCE FOUND:

The 1 1/2" Iron pipe set by Larry Austin could not be recovered. I found 3 witness corners (one disturbed) from Larry Austin's tie sheet. I reset a Mag Nail at the corner location determined from 2 witness corners and measurements to area Section Corners. I set 2 new witness corner and verified this locaiton with G.P.S. and E.D.M. methods.

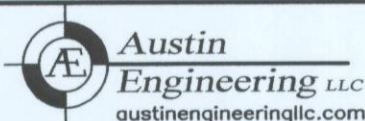
DESCRIPTION OF CORNER AND WITNESS MONUMENTS, references and accessories used to perpetuate the original or re-established location of this corner. Witnesses to corner location Shane Austin.

**SKETCH:**



**LEGEND**

- ⊕ Section Corner - as designated
- 3/8" Steel Spike found
- 1/2" x 12" Rebar set with red plastic "TIE" cap
- x-x- Approximate existing fence



4211 HWY 81 E, LANCASTER, WI 53813  
 PHONE: 608-723-6363 FAX: 608-723-6702

JOB NO: 15s208  
 H:CRD\15s208  
 H:\TIE\T2NR1W\30

FIELDBOOK: TDSR  
 DRAWN BY: AJ AUSTIN  
 CREW: SW AUSTIN

# GRANT COUNTY

## Survey Monument Record

TYPE OF MONUMENT 1 1/2" IRON PIPE  
 STATE PLANE COORDINATES: N \_\_\_\_\_  
 E \_\_\_\_\_  
 ELEVATION — M.S.L. DATUM: \_\_\_\_\_  
 THETA ANGLE: \_\_\_\_\_  
 FIELD BOOK: NA  
 PAGE \_\_\_\_\_

CORNER NO. 30  
 SECTION 5  
 TOWN 2N  
 RANGE 1W  
S 1/4 COR.



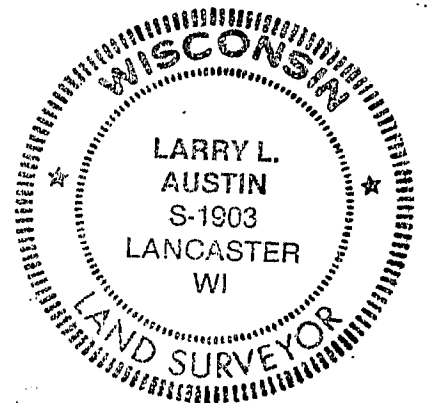
LOCATION  
 (Indicated by "•")

### BASIS FOR MONUMENT LOCATION

(Use reverse side if necessary)

Show info such as: History of corner, with reference to Vol. and pg., dates, surveyor; exact description of monument replaced; if location computed, by taped or EDM traverse; landowner, remarks, etc.

SEAL:



NO RECORD FOUND OF CORNER SINCE ORIGINAL SURVEY; ACCEPTED OCCUPIED LOCATION OF CORNER & VERIFIED BY EDM TRAVERSE

CERTIFIED CORRECT

Registered Land Surveyor

DATE: \_\_\_\_\_

### TIE SKETCH

Show at least three (3) ties and monument

