

# U.S. PUBLIC LAND SURVEY MONUMENT RECORD - GRANT COUNTY, WI

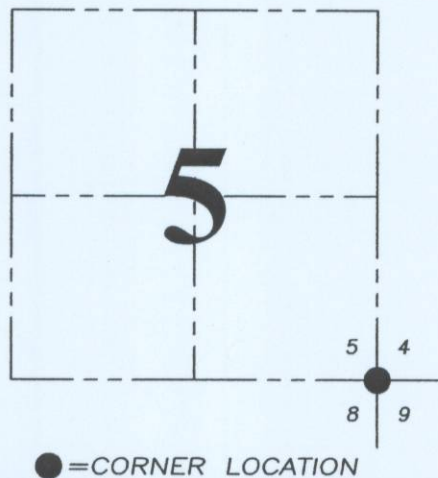
Section 5, Town 2 North Range 1 West, Town of Smelser.

## CERTIFICATE:

I, Aaron J. Austin, Wisconsin Professional Land Surveyor, do hereby certify that the corner location on this record was determined by me and/or under my direct supervision and that this U.S. Public Land Survey Monument Record is correct and complete to the best of my knowledge and belief.

Dated this 7th day of October, 2015.

*Aaron J. Austin*  
 Aaron J. Austin, S-2922



## HISTORY OF CORNER ESTABLISHMENT:

1832-Corner set by Lucius Lyon.

1852-Everett tied to the corner on a Survey filed in Book B, Page 290.

1854-Overton tied to the corner on a Survey filed in Book B, Page 351.

1994-Larry Austin reset the corner and filed a Grant County Survey Monument Record

1994-Larry Austin reset the corner on a Survey filed in Book U, Page 57.

1998-Stan King tied to the corner on Certified Survey Map No. 475

2002-Larry Austin tied to the corner on a Survey filed in Book 6, Page 21.

2000-Larry Austin tied to the corner on a Survey filed in Book 7, Page 58.

2002-Larry Austin tied to the corner on a Survey filed in Book 12, Page 11.

2012-Aaron Austin tied to the corner on a Survey filed in Book 31, Page 39.

## DESCRIPTION OF CORNER EVIDENCE FOUND:

The 2" Pipe post could not be recovered. I reset a 1" x 24" rebar with a Grant County Aluminum Cap at the corner based measurements to the East 1/4 corner and the South 1/4 corner of Section 5 as shown on the Survey filed in Book 6, Page 21. I set 4 new witness corners and verified this location with G.P.S. and E.D.M. methods.

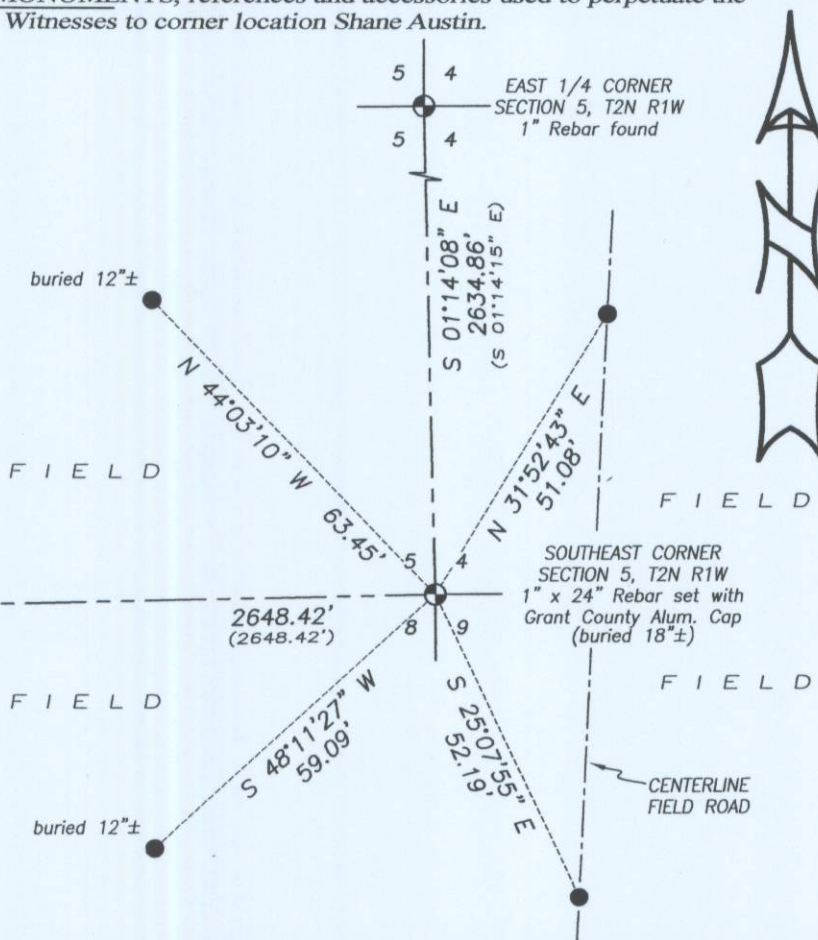
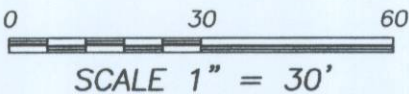
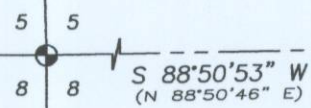
## DESCRIPTION OF CORNER AND WITNESS MONUMENTS, references and accessories used to perpetuate the original or re-established location of this corner. Witnesses to corner location Shane Austin.

### SKETCH:

### LEGEND

- ⊙ Section Corner—as designated
- 1/2" x 12" Rebar set with red plastic "TIE" cap

SOUTH 1/4 CORNER  
 SECTION 5, T2N R1W  
 Mag Nail set



**Austin Engineering LLC**  
 austinengineeringllc.com

4211 HWY 81 E, LANCASTER, WI 53813  
 PHONE: 608-723-6363 FAX: 608-723-6702

JOB NO: 15s208  
 H:CRD\15s208  
 H:\TIE\T2NR1W\30

FIELDBOOK: TDSR  
 DRAWN BY: AJ AUSTIN  
 CREW: SW AUSTIN

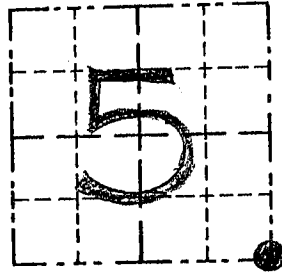
# GRANT COUNTY

## Survey Monument Record

TYPE OF MONUMENT 2" IRON PIPE POST  
STATE PLANE COORDINATES: N \_\_\_\_\_  
E \_\_\_\_\_  
ELEVATION — M.S.L. DATUM: \_\_\_\_\_  
THETA ANGLE: \_\_\_\_\_  
FIELD BOOK: NA  
PAGE \_\_\_\_\_

CORNER NO. 29  
SECTION 5  
TOWN 2 N  
RANGE 1 W

SE COR.



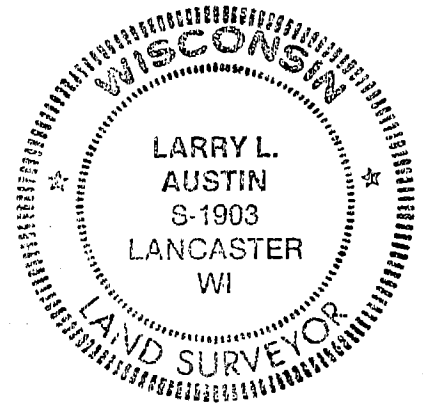
LOCATION  
(Indicated by "•")

### BASIS FOR MONUMENT LOCATION

(Use reverse side if necessary)

Show info such as: History of corner, with reference to Vol. and pg., dates, surveyor; exact description of monument replaced; if location computed, by taped or EDM traverse; landowner, remarks, etc.

SEAL:



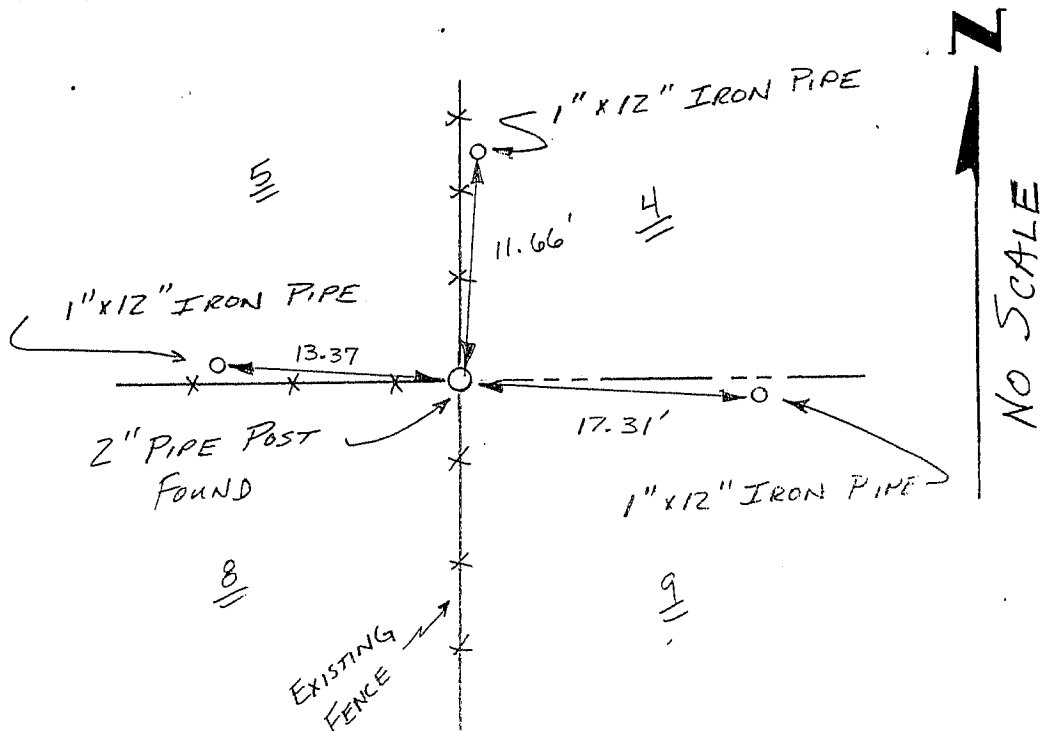
NO RECORD OF CORNER  
FOUND SINCE ORIGINAL  
SURVEYS, I FOUND & ACCEPTED  
THE 2" PIPE POST AT OCCUPIED LOCATION  
& VERIFIED ITS LOCATION  
BY EDM TRAVERSE OF  
THE AREA.

CERTIFIED CORRECT

Larry L. Austin  
Registered Land Surveyor  
DATE: 6/12/94

### TIE SKETCH

Show at least three (3) ties and monument

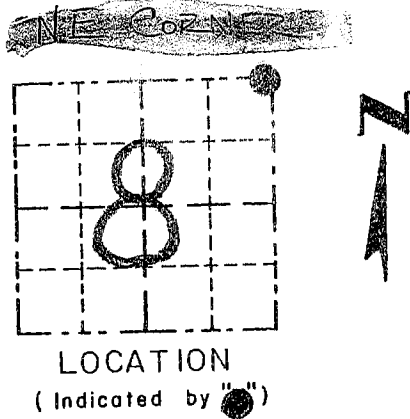


# GRANT COUNTY

## Survey Monument Record

TYPE OF MONUMENT 2" IRON PIPE POST  
 STATE PLANE COORDINATES: N \_\_\_\_\_  
 E \_\_\_\_\_  
 ELEVATION — M.S.L. DATUM: \_\_\_\_\_  
 THETA ANGLE: \_\_\_\_\_  
 FIELD BOOK: NA  
 PAGE \_\_\_\_\_

CORNER NO. 30 29  
 SECTION 8  
 TOWN 2 N  
 RANGE 1 W



LOCATION  
 (Indicated by "●")

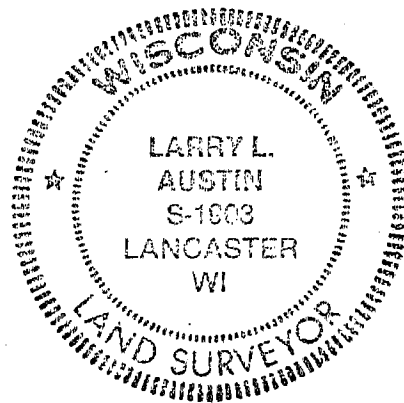
### BASIS FOR MONUMENT LOCATION

(Use reverse side if necessary)

Show info such as: History of corner, with reference to Vol. and pg., dates, surveyor; exact description of monument replaced; if location computed, by taped or EDM traverse; landowner, remarks, etc.

SEAL:

*NO RECORD OF CORNER FOUND  
 SINCE ORIGINAL SURVEYS; ACCEPTED  
 THE LOCATION OF 2" PIPE POST  
 AT OCCUPIED LOCATION & VERIFIED  
 BY EDM TRAVERSE*



CERTIFIED CORRECT

*Larry L. Austin*  
 Registered Land Surveyor

DATE: 4/25/94

### TIE SKETCH

Show at least three (3) ties and monument

