

GRANT COUNTY

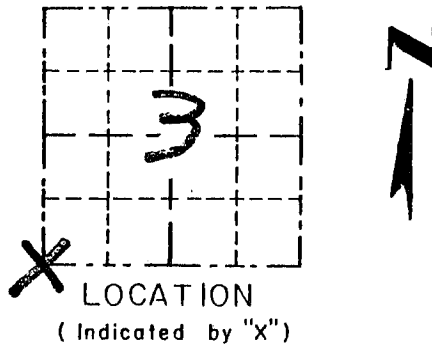
Survey Monument Record

TYPE OF MONUMENT 3/4" X 24" IRON ROD SET
 STATE PLANE COORDINATES: N W/CAP
 E _____
 ELEVATION — M.S.L. DATUM: _____
 THETA ANGLE: _____
 FIELD BOOK: 96-04
 PAGE _____

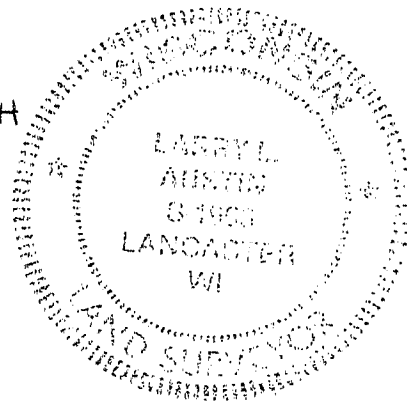
CORNER NO. 27
 SECTION 3
 TOWN 2N
 RANGE 1W

BASIS FOR MONUMENT LOCATION

(Use reverse side if necessary)



NO RECORD FOUND SINCE ORIGINAL SURVEY IN 1832 SEAL: BY LYON. I ACCEPTED OCCUPATION. DETERMINING EAST - WEST LOCATION. THE NORTH - SOUTH LOCATION WAS DETERMINED BY PROPORTIONING 1/2 MILE SOUTH & 1 MILE NORTH; VERIFIED BY EDM TRAVERSE OF THE AREA. FOUND REMNANTS OF POST AT 12" DEPTH IN FIELD.



CERTIFIED CORRECT

Larry L. Austin
 Registered Land Surveyor

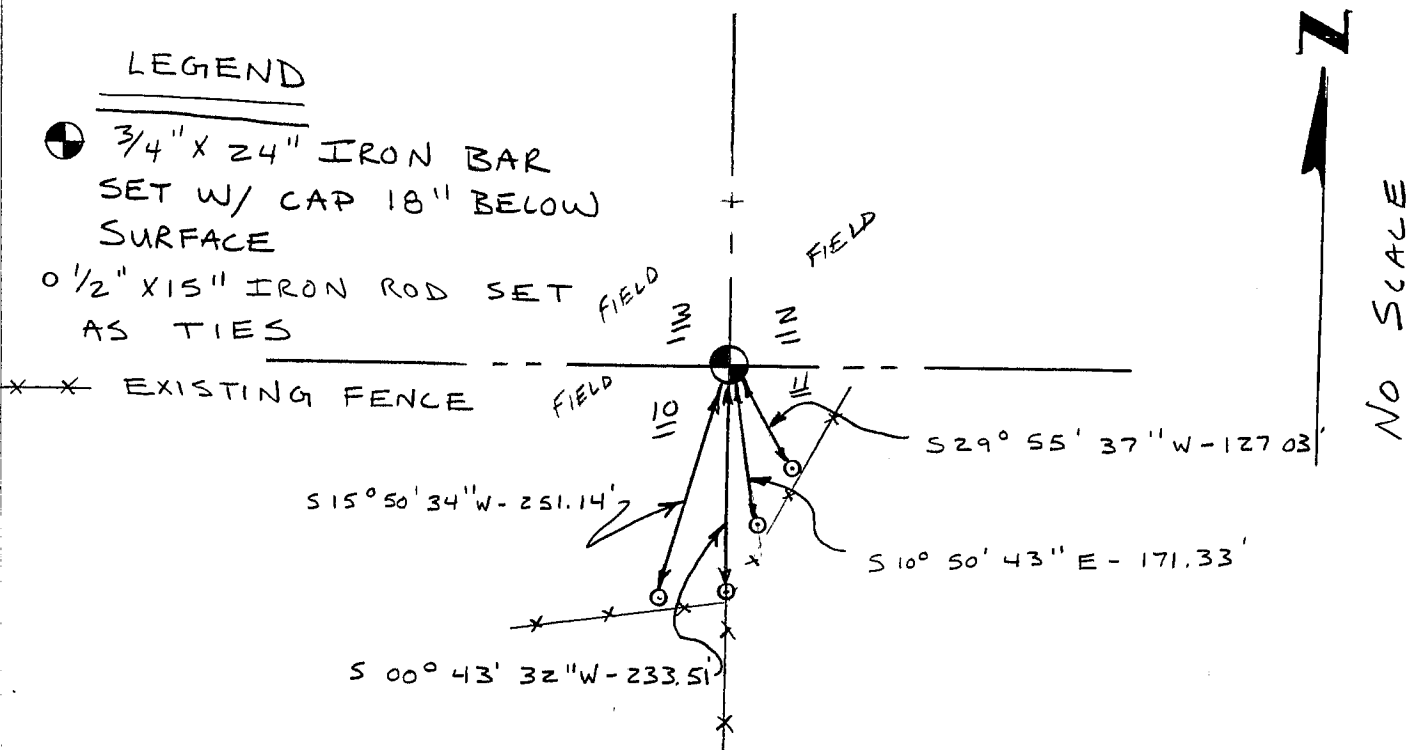
DATE: 5-7-96

TIE SKETCH

Show at least three (3) ties and monument

LEGEND

- ⊕ 3/4" X 24" IRON BAR SET W/ CAP 18" BELOW SURFACE
- 1/2" X 15" IRON ROD SET AS TIES

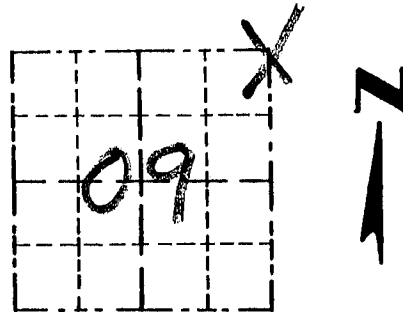


Survey Monument Record

TYPE OF MONUMENT 3/4" X 24" IRON
BAR SET W/ CAP

CORNER NO. 27
 SECTION 09
 TOWN 2N
 RANGE 1W

FIELD BOOK: 96-04
 PAGE (18)



LOCATION
 (Indicated by "X")

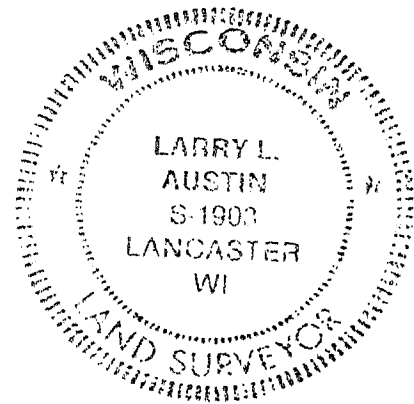
BASIS FOR MONUMENT LOCATION

(Use reverse side if necessary)

Show info such as: History of corner, with reference to Vol. and pg., dates, surveyor; exact description of monument replaced; if location computed, by taped or EDM traverse; landowner, remarks, etc.

CORNER SET IN 1832 BY LUCIUS LYON, NO RECORD OF CORNER FOUND SINCE ORIGINAL SURVEY; CORNER SET ONLINE WITH FENCE SOUTH, MIDWAY BETWEEN THE E 1/4 SECTION 9 AND THE E 1/4 SECTION 4. VERIFIED ITS LOCATION USING EDM METHODS.

SEAL:



CERTIFIED CORRECT

Larry L. Austin
 Registered Land Surveyor

DATE: 4/30/97

TIE SKETCH

Show at least three (3) ties and monument

LEGEND

- 3/4" X 24" IRON BAR SET W/ ALUM. CAP. FIELDS
- 1/2" X 15" IRON BAR SET
- XX EXISTING FENCE

