

UNITED STATES PUBLIC LAND SURVEY CORNER CERTIFICATE

OF

LAND SURVEY MONUMENTS SITUATED IN SECTION 31, TOWNSHIP 1 NORTH, RANGE 1 WEST
 OF THE FOURTH PRINCIPAL MERIDIAN, HAZEL GREEN COUNTY, WISCONSIN.
 PREVIOUSLY RECORDED IN _____ IN COUNTY RECORDER'S OFFICE.

(Show reason for preparing this certificate, the evidence and detailed procedures used in establishing the corner positions and monumentation found or placed.)

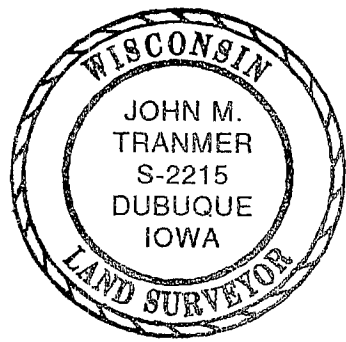
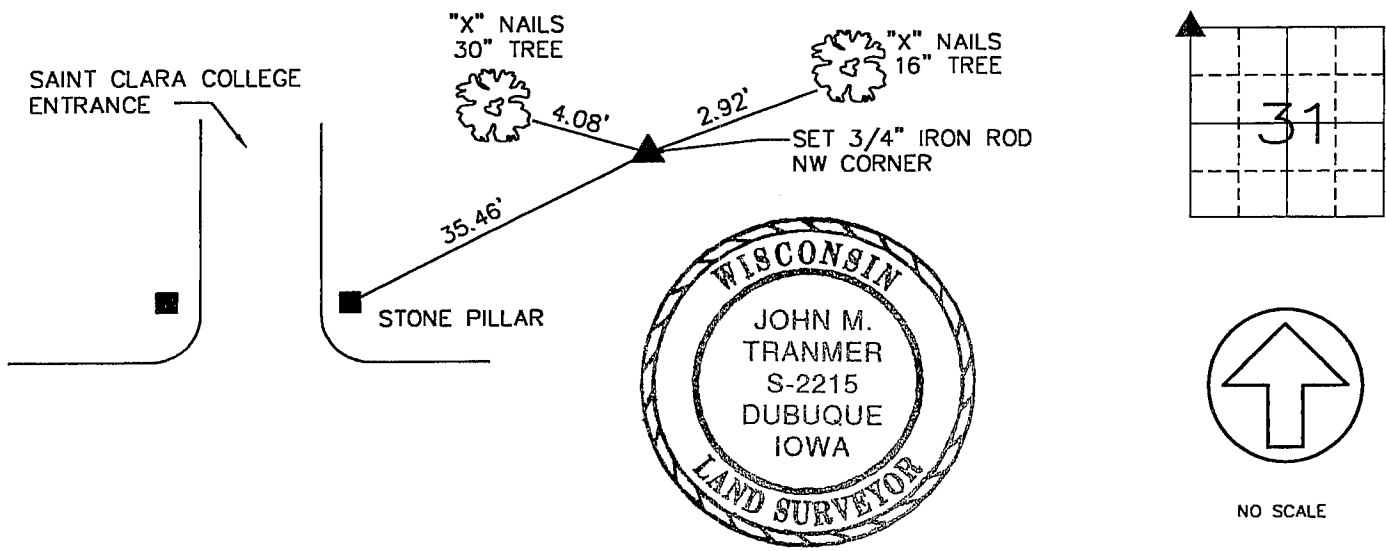
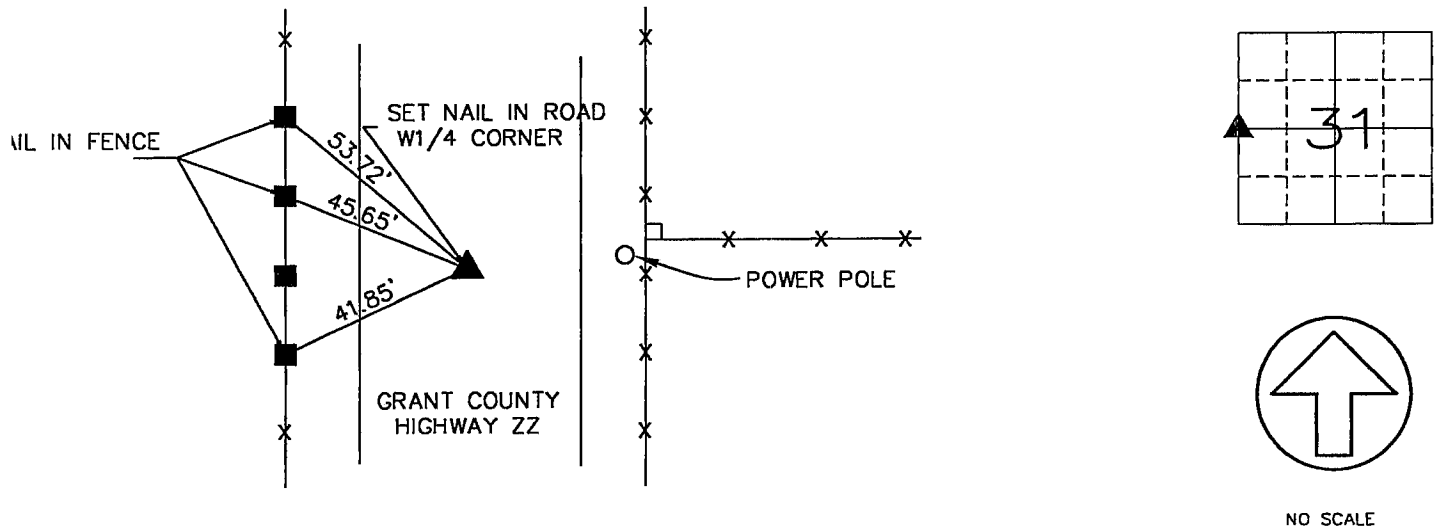
Monument Description and Remarks: _____

W1/4 CORNER, SECTION 31, T1N, R1W - SET NAIL IN ASPHALT ROAD

NW CORNER, SECTION 31, T1N, R1W - SET 3/4" x 24" IRON ROD

PLAN - VIEW

(Show a minimum of three reference ties to durable physical objects, relevant monuments and physical conditions that will enable recovery of the corner.)




I HEREBY CERTIFY THAT THE SURVEY WORK WAS COMPLETED AND THIS CERTIFICATE WAS PREPARED BY ME OR UNDER MY DIRECT PERSONAL SUPERVISION AND THAT I AM A DULY REGISTERED LAND SURVEYOR UNDER THE LAWS OF THE STATE OF WISCONSIN.

John M. Tranmer
 JOHN M. TRANMER REG. NO. S-2215
 DATE: 7-25-00
 MY REGISTRATION EXPIRES JAN 31, 2002

LIST CORNERS TO BE INDEXED

CORNERS	SECTION	TWP	RANGE
W1/4 CORNER	31	T1N	R1W
NW CORNER	31	T1N	R1W

 <p>ENGINEERS AND SURVEYORS P.C. Iowa, Illinois, Wisconsin 4155 Pennsylvania Ave. Dubuque, Ia. 52002 (319) 556-2464 Guttenberg, IA Galena, IL Cuba City, WI</p>	MONUMENT RECORD		
	COUNTY: <u>GRANT</u> TOWNSHIP: <u>HAZEL GREEN</u>		DATE: <u>7-17-00</u> REVISED: _____