

**U.S. PUBLIC LAND SURVEY MONUMENT RECORD - GRANT COUNTY, WI**

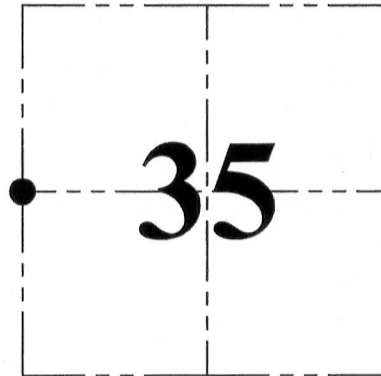
Section 35, Town 1 North Range 2 West, Town of Jamestown

**CERTIFICATE:**

I, Aaron J. Austin, do hereby certify that the corner location on this record was determined by me and/or under my direct supervision and that this U.S. Public Land Survey Monument Record is correct and complete to the best of my knowledge and belief.

Dated this 19th day of October, 2011.

*Aaron J. Austin*  
 Aaron J. Austin, S-2922



● = CORNER LOCATION

HISTORY OF CORNER ESTABLISHMENT:

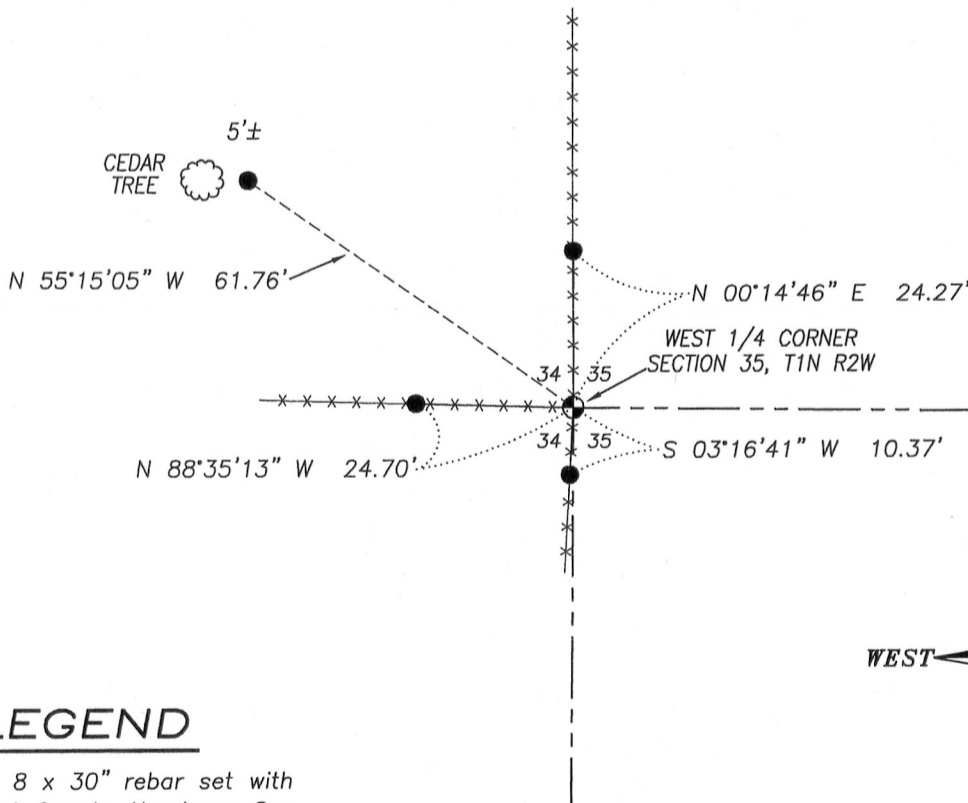
Corner was originally set by Lucius Lyon in 1832. H. A. Wiltse tied to the corner in 1842. Wiltse noted that the original corner was destroyed. No other record was found of this corner.

DESCRIPTION OF CORNER EVIDENCE FOUND:

I was unable to locate any evidence of the original corner or the corner by Wiltse. I found and accepted a fence corner and verified this location by E.D.M. and G.P.S. traverse of the area.

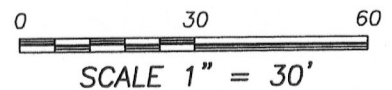
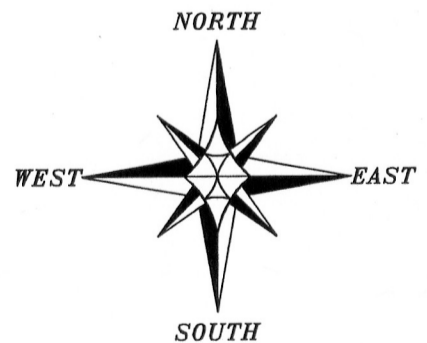
DESCRIPTION OF CORNER AND WITNESS MONUMENTS, references and accessories used to perpetuate the original or re-established location of this corner. Witnesses to corner location Bobby Sedgwick & Shelby Blindert

SKETCH:



LEGEND

- No. 8 x 30" rebar set with Grant County Aluminum Cap
- Number 4 x 24" Rebar set with red plastic "TIE" cap



4211 HWY 81 E, LANCASTER, WI 53813  
 PHONE: 608-723-6363 FAX: 608-723-6702

JOB NO: 11s209  
 G:\T1NR1W\T1NR1W  
 H:\TIE\T1NR2W\118

FIELDBOOK: TDSR  
 DRAWN BY: AJ AUSTIN  
 CREW: BS-SB