

U.S. PUBLIC LAND SURVEY MONUMENT RECORD - GRANT COUNTY, WI

Section 34, Town 1 North Range 2 West, Town of Jamestown

CERTIFICATE:

I, Aaron J. Austin, do hereby certify that the corner location on this record was determined by me and/or under my direct supervision and that this U.S. Public Land Survey Monument Record is correct and complete to the best of my knowledge and belief.

Dated this 5th day of June, 2012.

Aaron J. Austin
 Aaron J. Austin, S-2922



● = CORNER LOCATION

HISTORY OF CORNER ESTABLISHMENT:

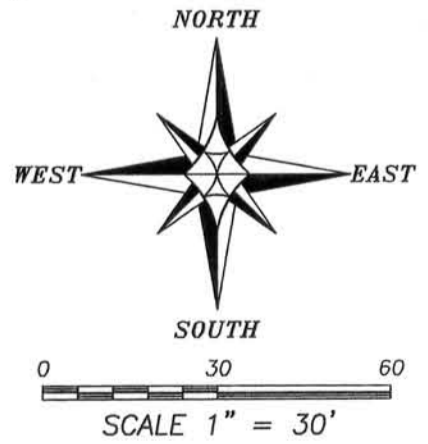
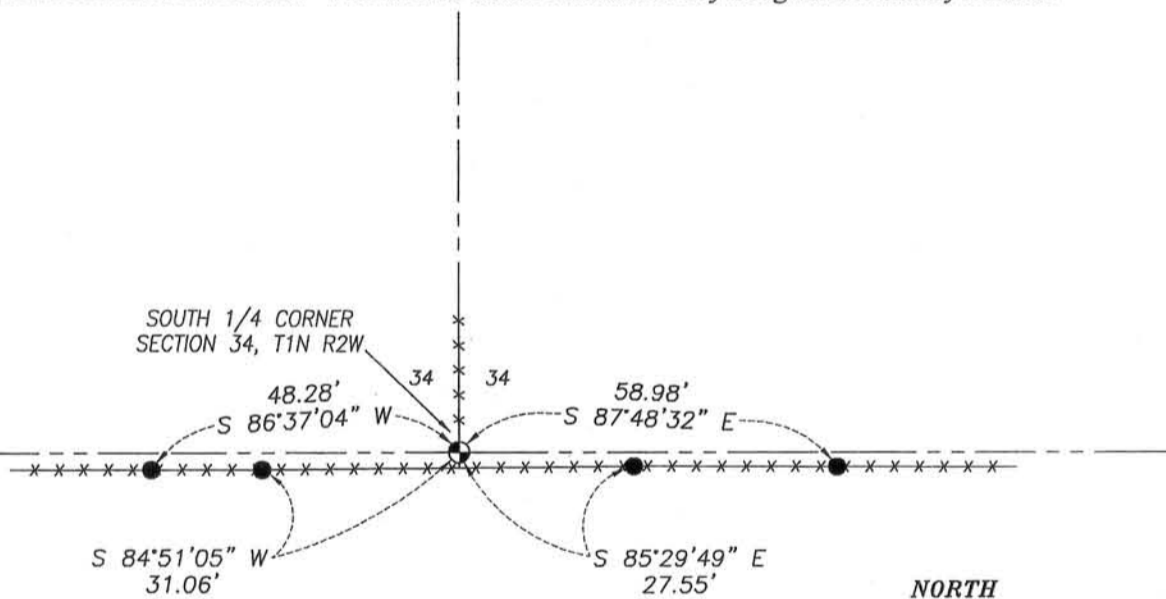
Original corner set by Lucius Lyon in January of 1833.
 Homer Ralph Jr.-1959, Book E, Page 52; Bruce Bowden-1987, Book J, Page 110-111;
 Keith Dalsing-1990, Book O, Page 77; David Burbach-1992, Book R, Page 84;
 Larry Austin-1997, Book 1, Page 48; Larry Austin-2005, Book 18, Page 34;
 all being in Grant County Surveys filed in Grant County Tax Lister's Office.

DESCRIPTION OF CORNER EVIDENCE FOUND:

I found and accepted evidence of a No. 6 rebar at a fence intersection. This rebar was measured to and accepted by various surveyors. I verified this location by E.D.M. and G.P.S. methods.

DESCRIPTION OF CORNER AND WITNESS MONUMENTS, references and accessories used to perpetuate the original or re-established location of this corner. Witnesses to corner location Bobby Sedgwick & Shelby Blindert

SKETCH:



LEGEND

- ⊙ No. 6 rebar found
- Number 4 x 24" Rebar set with red plastic "TIE" cap
- x-x- Approximate existing fence



4211 HWY 81 E, LANCASTER, WI 53813
 PHONE: 608-723-6363 FAX: 608-723-6702

JOB NO: 12s026
 G:\T1NR1W\T1NR1W
 H:\TIE\T1NR2W\126

FIELDBOOK: TDSR
 DRAWN BY: AJ AUSTIN
 CREW: BS-SB