

U. S. PUBLIC LAND SURVEY MONUMENT RECORD

INSTRUCTIONS : This record shall show the location of the corner and shall include all of the following nine elements (a through i).

(a) Identify the corner by reference to the U.S. public land survey system.

● = Corner monument restored.

STATE OF WISCONSIN

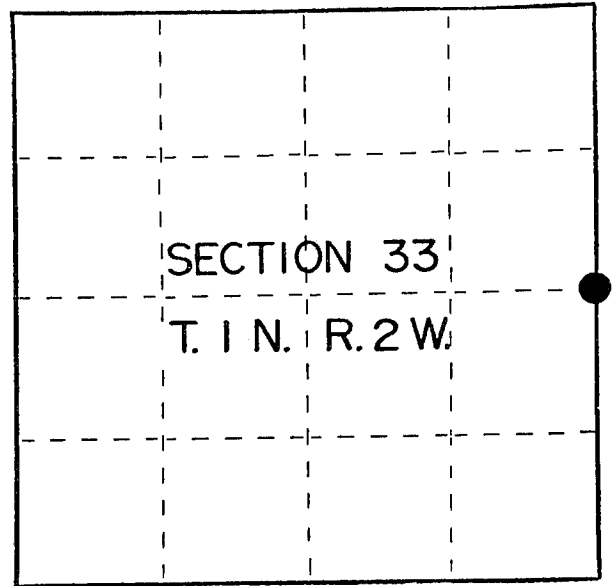
COUNTY OF GRANT

Quarter Corner to Sections 33 and 34  
Township 1 North, Range 2 West of the  
4th Principal Meridian

Original government corner established  
in 1832

W. Oak 14, S54E, 20 lks.

W. Oak 13, N12W, 10 lks.



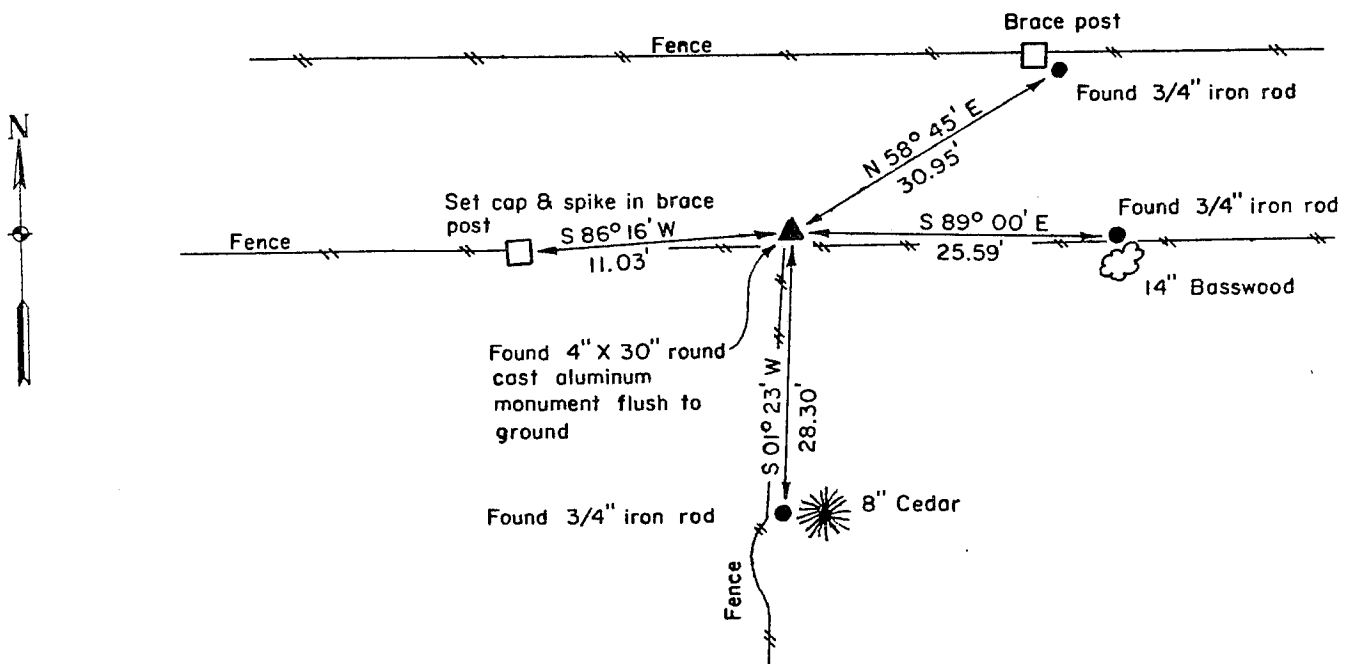
(b) Describe any record evidence, monument evidence, occupational evidence, testimonial evidence or any other material evidence you considered, and whether the monument was found or placed.

January 27, 1986

From records of Bruce D. Bowden, R.L.S., Talarczyk & Assoc., dated April 4, 1978, found 4" round cast aluminum monument flush with ground and also found three 3/4" iron rods set as witness monuments. Said records found on file in the County Clerk's office, Grant County Courthouse, Lancaster, Wisconsin.

(c) In the plan view drawing below, provide reference ties to at least 4 witness monuments, or, if the location is within a municipality, to at least 2 witness monuments. (Witness monuments shall be made of concrete, natural stone, iron or other equally durable material.) Describe witness monuments.

(d) Show a plan view drawing depicting the relevant monuments and reference ties which is sufficient in detail to enable accurate relocation of the corner monument if the corner monument is disturbed. Indicate north.





# SECTION CORNER TIES

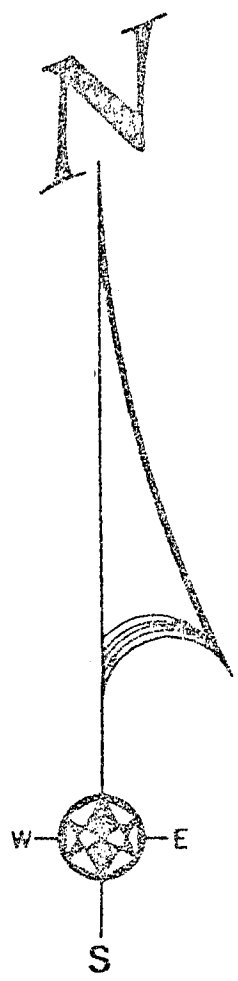
TO THE EAST CORNER OF SECTION 33, TOWN 1 NORTH,  
RANGE WEST, FOURTH PRINCIPLE MERIDIAN, ~~TOWNSHIP~~  
~~TOWNSHIP~~, GRANT COUNTY, WISCONSIN.

*Jamestown*

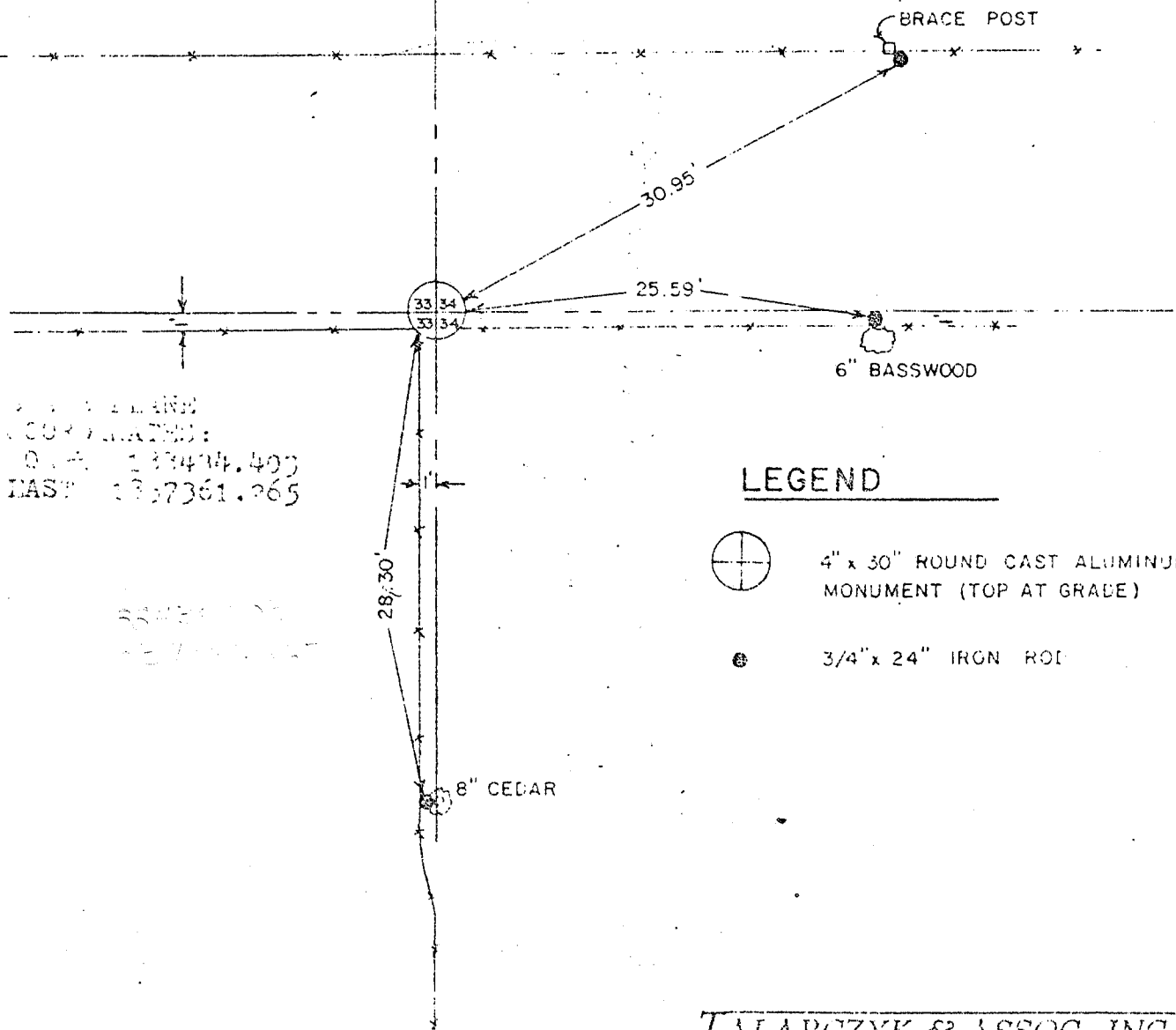
I, Bruce D. Bowden, hereby certify that I have complied with the Wisconsin statutes, the Statutes of the United States, and the rules and regulations of the Secretary of the Interior in the location of the corner shown below.

April 4, 1978

*Bruce D. Bowden*  
Bruce D. Bowden R.L.S.-1450





Corner set in place of unrecorded stone monument and checked with proportionate measurement. We also checked the ties to two previous surveys that were tied to this corner.



SECTION CORNER  
COORDINATES:  
NAD 83 133414.403  
EAST 1337361.265

### LEGEND

-  4" x 30" ROUND CAST ALUMINUM MONUMENT (TOP AT GRADE)
-  3/4" x 24" IRGN ROD

BOOK E-1 PAGE 47  
JOB NO D. BOWEN  
CHECKED BY [Signature]  
DRAWN BY [Signature]

SCALE: 1" = 10'

**TALARCZYK & ASSOC., INC.**

110 E. Division Street  
DODDVILLE, WI 53533

Phone 608/935-5301

*P. 117*