

U. S. PUBLIC LAND SURVEY MONUMENT RECORD

INSTRUCTIONS: This record shall show the location of the corner and shall include all of the following nine elements (a through i).

- (a) Identify the corner by reference to the U.S. public land survey system.

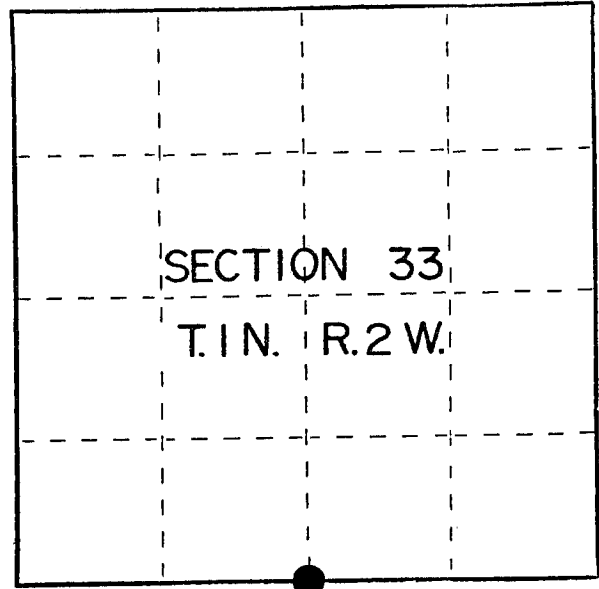
● = Corner monument restored.

STATE OF WISCONSIN  
COUNTY OF GRANT

Quarter Corner to Section 33 on Wisconsin-Illinois State Line, Township 1 North, Range 2 West of the 4th Principal Meridian

Original government corner established in 1832

B. Oak 16, N37E, 16 lks.  
W. Oak 15, N62W, 18 lks.

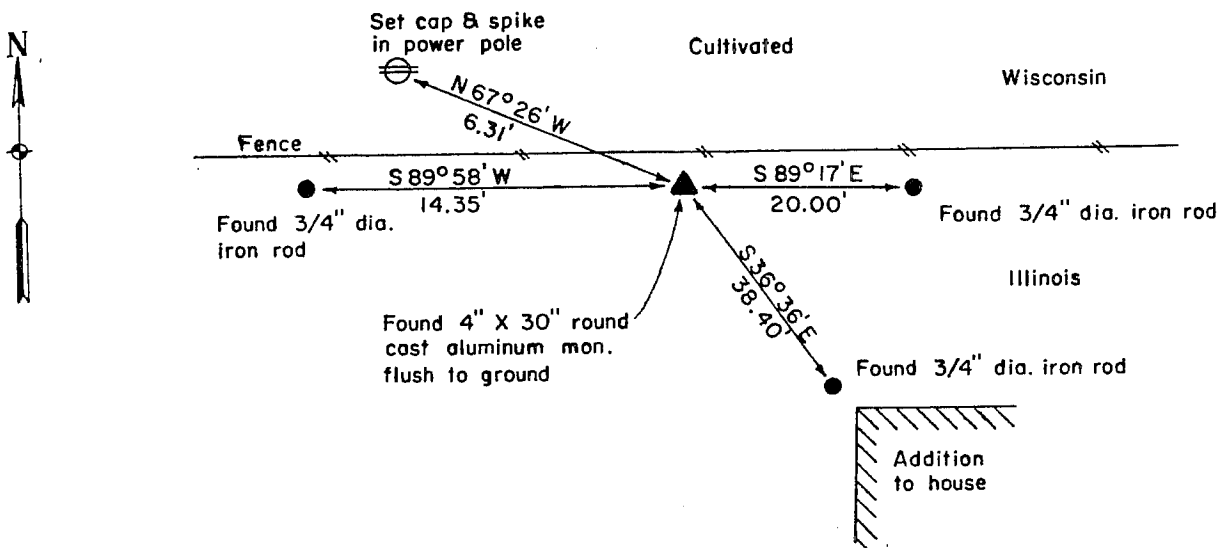


- (b) Describe any record evidence, monument evidence, occupational evidence, testimonial evidence or any other material evidence you considered, and whether the monument was found or placed.  
January 27, 1986

From records of Bruce D. Bowden, R.L.S., Talarczyk & Assoc., dated March 31, 1978, found 4" round cast aluminum monument flush with ground and also found three 3/4" iron rods set as witness monuments. Said records found on file in the County Clerk's office, Grant County Courthouse, Lancaster, Wisconsin.

- (c) In the plan view drawing below, provide reference ties to at least 4 witness monuments, or, if the location is within a municipality, to at least 2 witness monuments. (Witness monuments shall be made of concrete, natural stone, iron or other equally durable material.)  
Describe witness monuments.

- (d) Show a plan view drawing depicting the relevant monuments and reference ties which is sufficient in detail to enable accurate relocation of the corner monument if the corner monument is disturbed. Indicate north.





# SECTION CORNER TIES

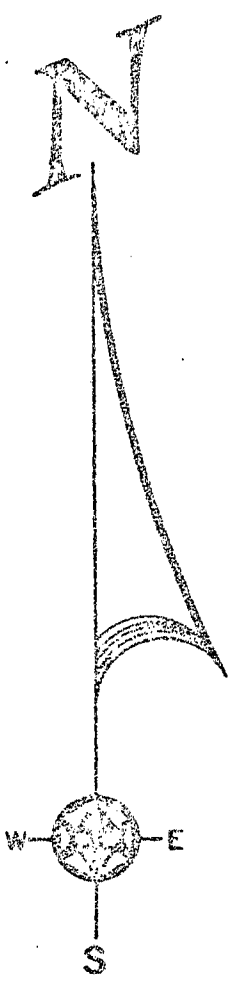
TO THE NORTH ONE-THIRD CORNER OF SECTION 35,  
TOWNSHIP NORTH, RANGE TWO WEST, OF THE FOURTH  
PRINCIPAL MERIDIAN, WISCONSIN COUNTY, WISCONSIN.

I, Bruce D. Jordan, hereby certify that  
I have complied with the Wisconsin Statutes,  
the Statutes of the United States, and the  
rules and regulations made by the Secretary  
of the Interior in the location of the  
corner shown below.

*James L. Jordan*

March 31, 1975

*Bruce D. Jordan*



### LEGEND

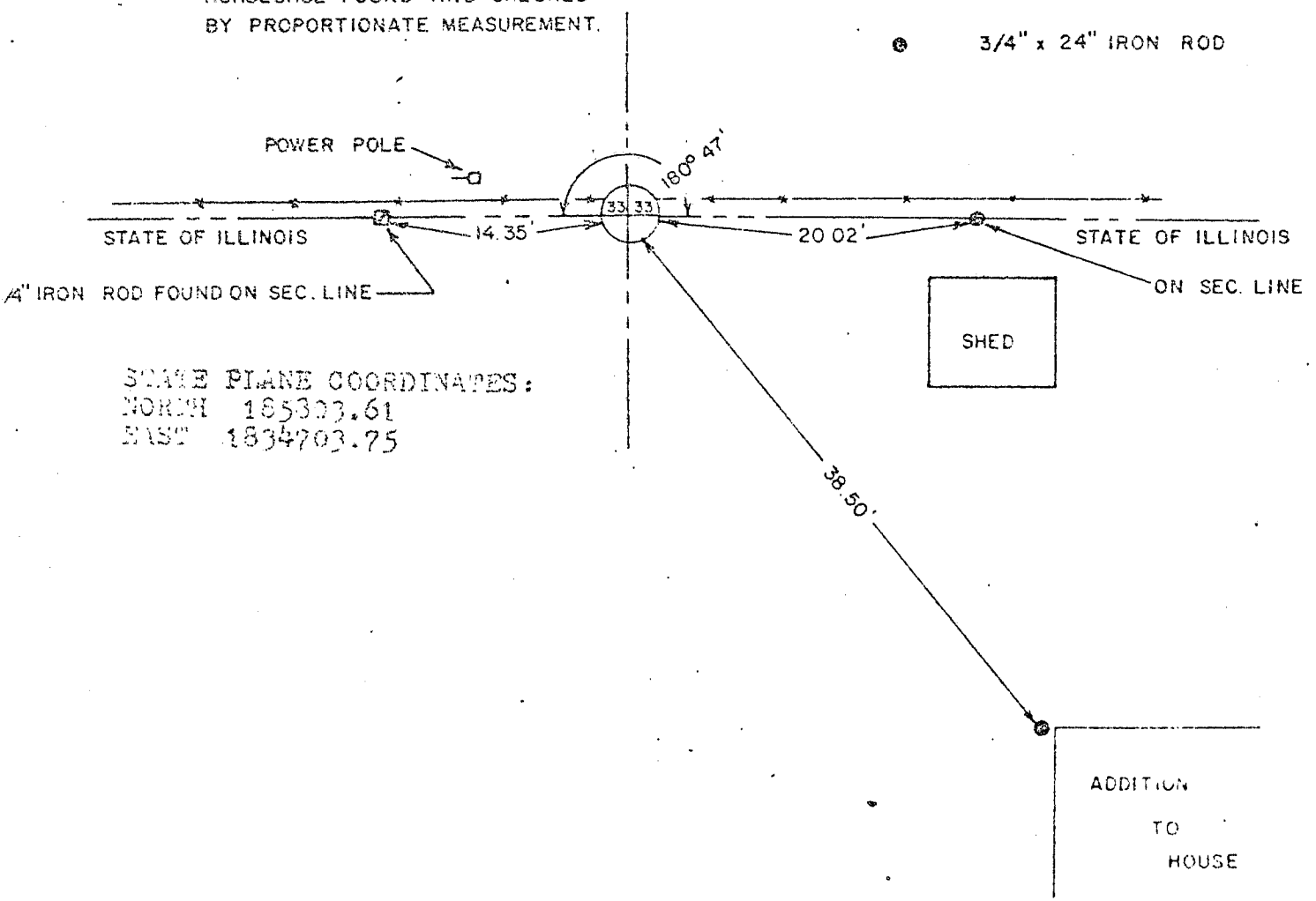


4" x 30" ROUND CAST ALUMINUM  
MONUMENT (TOP AT GRADE).



3/4" x 24" IRON ROD

MONUMENT SET IN PLACE OF  
HORSESHOE FOUND AND CHECKED  
BY PROPORTIONATE MEASUREMENT.



STATE PLANE COORDINATES:  
NORTH 165373.61  
EAST 1834703.75

TALARCZYK & ASSOC., INC.

110 E. Division Street  
DODGEVILLE, WI 53535

Phone 606/935-5301

BOOK D-1 PAGE 47  
JOB NO. 0-7800Z  
CHECKED BJD  
DRAWN BY BJD

SCALE: 1" = 10'

P 138