

MAY 19 1986

U. S. PUBLIC LAND SURVEY MONUMENT RECORD

INSTRUCTIONS: This record shall show the location of the corner and shall include all of the following nine elements (a through i).

(a) Identify the corner by reference to the U.S. public land survey system.

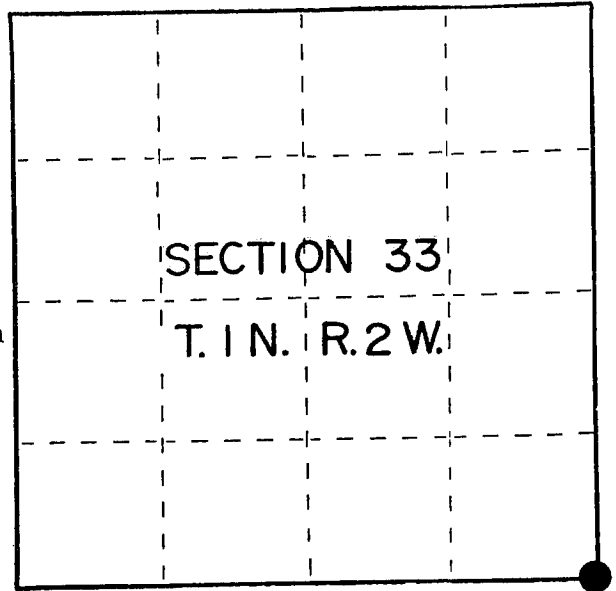
● = Corner monument restored.

STATE OF WISCONSIN
COUNTY OF GRANT

Corner to Sections 33 & 34, on Wisconsin-Illinois State line, Township 1 North, Range 2 West of the 4th Principal Meridian

Original government corner established in 1832

W. Oak 17, N60E, 69 lks.
W. Oak 20, N66W, 555 lks.



(b) Describe any record evidence, monument evidence, occupational evidence, testimonial evidence or any other material evidence you considered, and whether the monument was found or placed.

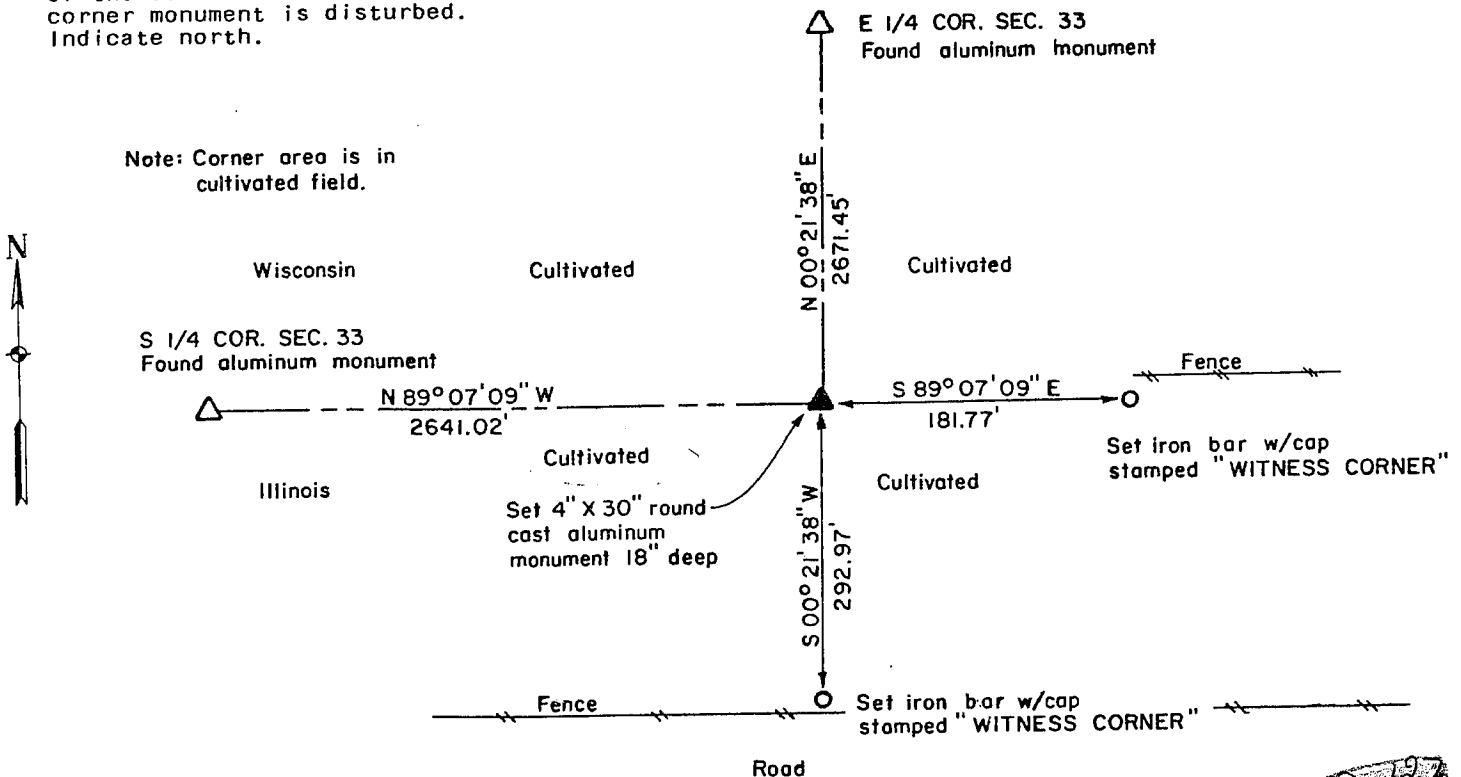
January 27, 1986

Found no evidence at the area of corner location. Monument was restored to the state plane coordinate position, 18" deep in cultivated field, from records of Bruce D. Bowden, R.L.S., Talarczyk & Assoc., dated April 4, 1978, on file in the County Clerk's office, Grant County Courthouse, Lancaster, Wisconsin.

(c) In the plan view drawing below, provide reference ties to at least 4 witness monuments, or, if the location is within a municipality, to at least 2 witness monuments. (Witness monuments shall be made of concrete, natural stone, iron or other equally durable material.) Describe witness monuments.

(d) Show a plan view drawing depicting the relevant monuments and reference ties which is sufficient in detail to enable accurate relocation of the corner monument if the corner monument is disturbed. Indicate north.

Note: Corner area is in cultivated field.



197

(e) Describe any material discrepancy between the location of the corner as restored or reestablished and the location of that corner as previously restored or reestablished by distance and direction. Show the discrepancy on the plan view drawing under (d), above. Show the distances between the corner as previously restored or reestablished and (1) the corner as restored or reestablished, and (2) to at least 2 of the witness monuments shown on the drawing in (d), above.

No Discrepancy Found

(f) Was the corner restored through acceptance of (1) an obliterated evidence location, or, (2) a found perpetuated location?

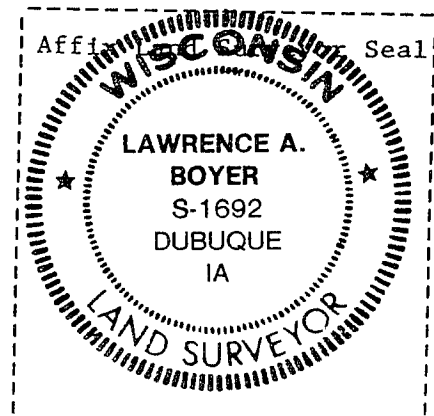
Not Applicable

(g&h) Was the corner reestablished through lost corner proportionate methods? If so, show the method, including the directions and distances to other public land survey corners used as evidence or used for proportioning in determining the corner location?

Not Applicable

WALLACE	ENGINEERS
HOLLAND	PLANNERS
KASTLER	ARCHITECTS
SCHMITZ & COMPANY	LAND SURVEYORS
	LANDSCAPE ARCHITECTS

MASON CITY, IOWA - DUBUQUE, IOWA - ROCHESTER, MINN.



Registered Land Surveyor

(i) I, Lawrence A. Boyer, Certificate No. S-1692 (type or print name) certify that the corner location shown on this record was determined by me or under my direction and control and that this U.S. Public Land Survey Monument Record is correct and complete to the best of my knowledge and belief.

Lawrence A. Boyer
Signature

April 18, 1986
Date

SECTION CORNER TIES

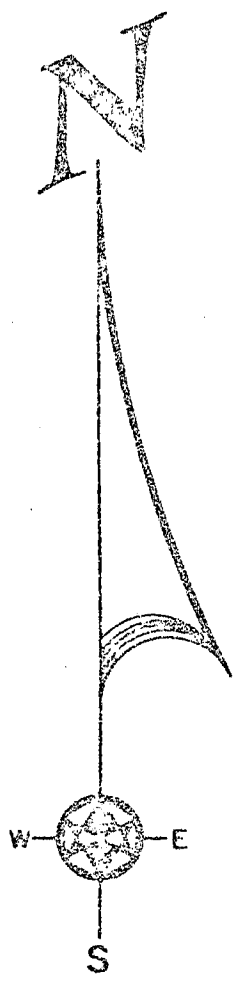
TO THE SOUTHEAST CORNER OF SECTION 33, TOWN 1 NORTH,
RANGE 2 WEST, FOURTH PRINCIPLE MERIDIAN, JAMESTOWN
TOWNSHIP, GRANT COUNTY, WISCONSIN.

Jamestown

I, Bruce E. Bowden, hereby certify that I have
complied with the Wisconsin statutes, the statutes
of the United States, and the rules and regulations
made by the Secretary of the Interior in the location
of the corner shown below.

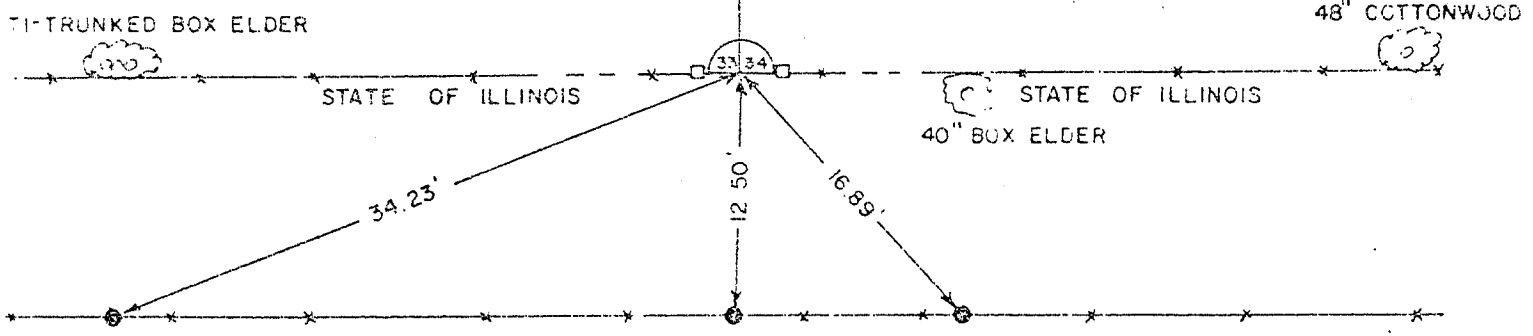
April 4, 1978

Bruce E. Bowden
Bruce E. Bowden A.L.S.-1750






STATE PLANE COORDINATES:
NORTH 185763.01
EAST 1837344.45

Monument set in place of 1" dia.
iron pipe as recorded on a pre-
vious survey.



N 185763.01
E 1837344.45

LEGEND

-  4" x 30" ROUND CAST ALUMINUM MONUMENT (TOP AT GRADE)
-  3/4" x 24" IRON ROD
-  WOOD SET POST

TALARCZYK & ASSOC., INC.

110 E Division Street
DODDENVILLE, WI 53532

BOOK D-1 PAGE 47
JOB NO. 07-107
CHECKED BY
DRAWN BY

SCALE: 1" = 10'

127