

U.S. Public Land Survey Monument Record

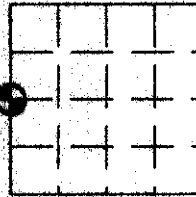
(a) Identify the corner by reference to the U.S. public land survey system.

This record shall show the location of the corner and shall include all of the following nine elements (a through i).

Sec. 33, T 1 N, R 2 W

 = Corner monument restored.

The SW corner of the NW quarter of Section 33,
Town 1 North, Range 2 West, JAMESTOWN TWP.
GRANT County, Wisconsin.






(f) The corner was restored through acceptance of
~~(1) an established evidence location~~
(2) a found perpetuated location
~~(3) lost corner proportionate methods~~

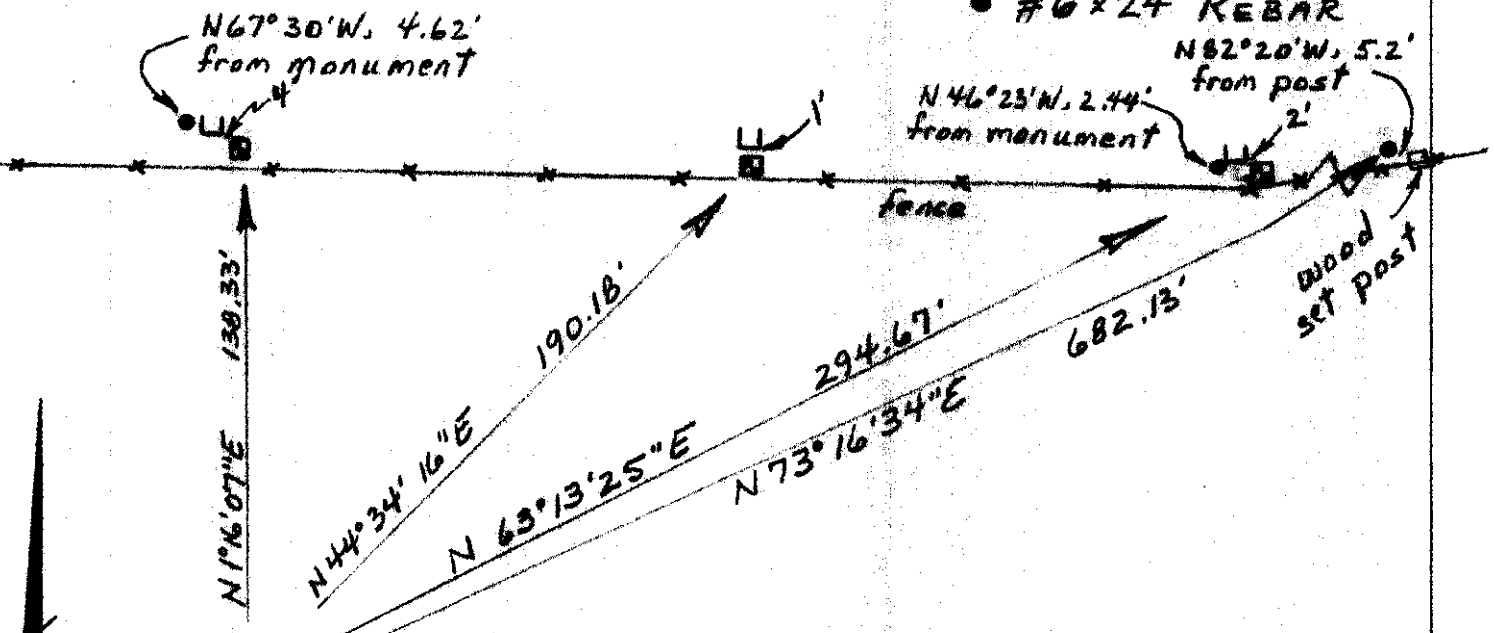
(b) Describe any record evidence, monument evidence, occupational evidence, testimonial evidence or any other material evidence you considered, and whether the monument was placed or found.

A 1" PIPE AT A FENCE CORNER WAS FOUND IN 1978 AND VERIFIED AS THE QUARTER SECTION CORNER. KEN HENNING, AS A WDOT SURVEYOR, PERPETUATED THIS LOCATION IN 1980 AND 1988 WITH ALUMINUM MONUMENT TIES AND A PK NAIL AT THE CORNER AFTER HIGHWAY CONSTRUCTION. I FOUND HENNING'S TIES AND SET A #6 X 24" REBAR AT THE CORNER IN THE ASPHALT SHOULDER OF THE HIGHWAY.

(c, d, e, g, h, i) Plan view drawing below, provide reference ties to at least 4 witness monuments, or, if the location is within a municipality, to at least 2 witness monuments. Depict the relevant monuments and reference ties in sufficient detail to enable accurate relocation of the corner monument, if disturbed. Indicate North. Describe any material discrepancy between the location of the corner as restored or reestablished and the location of that corner as previously monumented by distance and direction. Show the discrepancy on the plan view and the distances between the corner as previously monumented. If the corner was reestablished through lost corner proportionate methods, show the method, including the directions and distances to other public land survey corners used for proportioning in determining the corner location.

LEGEND

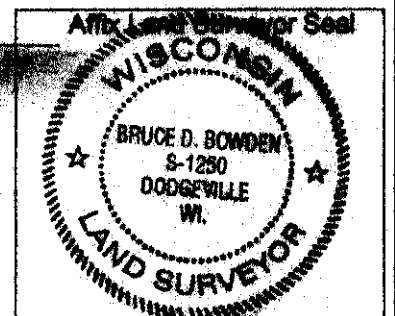
-  2" CHANNEL POST
-  W.D.T ALUMINUM MONUMENT
-  #6 X 24" REBAR



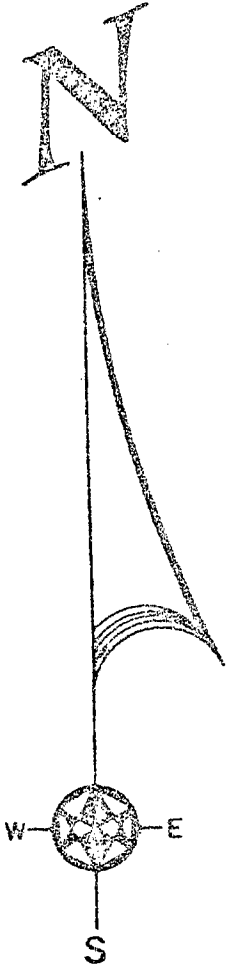
Scale: 1" = 50'

(i) I, Bruce D. Bowden do certify that the corner location shown on this record was determined by me or under my direction and control and that this U.S. Public Land Survey Monument Record is correct and complete to the best of my knowledge and belief.

Bruce D. Bowden May 6, 2015
Signature Date



SECTION CORNER TIES



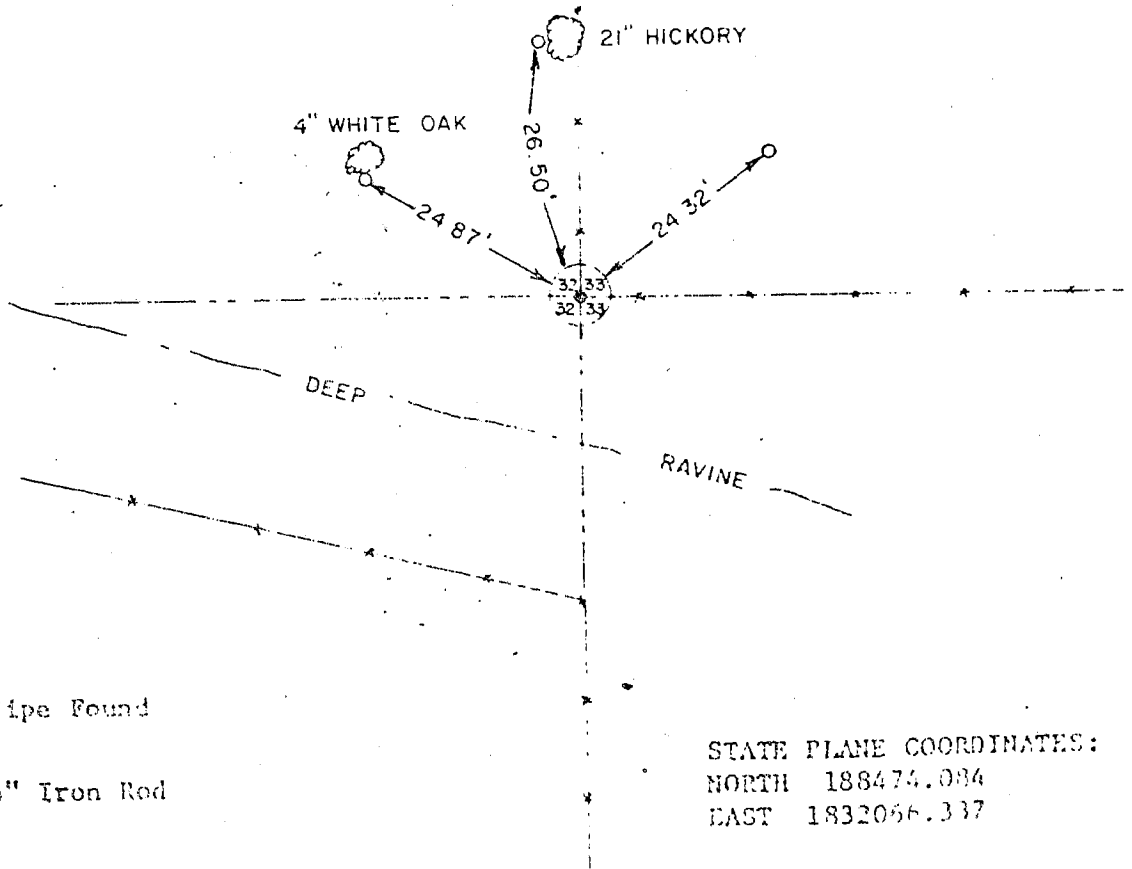
TO THE WEST 1/4 CORNER OF SECTION 33, TOWN 1 NORTH,
 RANGE 2 WEST, FOURTH PRINCIPLE MERIDIAN, JAMESTOWN
 TOWNSHIP, GRANT COUNTY, WISCONSIN.

I, Bruce D. Bowden, hereby certify that I have
 complied with the Wisconsin Statutes, the Statutes
 of the United States and the rules and regulations
 of the Secretary of the Interior in the location of
 the corner shown below.



April 24, 1978

Bruce D. Bowden
 Bruce D. Bowden R.L.S.-1250

CORNER IS EXISTING IRON PIPE CHECKED
 BY PROPORTIONATE MEASUREMENT AND
 FOUND TO BE WITHIN CONSTRUCTION
 LIMITS OF PROPOSED HIGHWAY. WE
 WERE INSTRUCTED TO LEAVE PIPE AND
 NOT SET CAST ALUMINUM MONUMENT.



LEGEND

-  1" Iron Pipe Found
-  3/4" x 24" Iron Rod

STATE PLANE COORDINATES:
 NORTH 188474.084
 EAST 1832066.337

BOOK D-1 PAGE 47
 JOB NO. D-75007
 CHECKED BY
 DRAWN BY

SCALE: 1" = 20'

TALARCZYK & ASSOC., INC.

110 E. Division Street
 DODGEVILLE, WI 53633

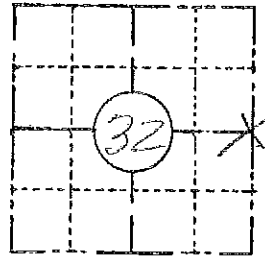
Phone 608/935-3301

P-116

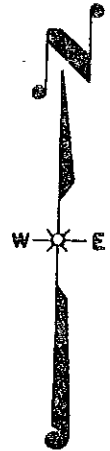
FIELD SURVEY NOTES
PRESERVATION OF LANDMARKS
 (Pursuant to Section 59.635(7) Wisconsin Statutes)

State Highway Commission of Wisconsin
 Form E-D-707-65

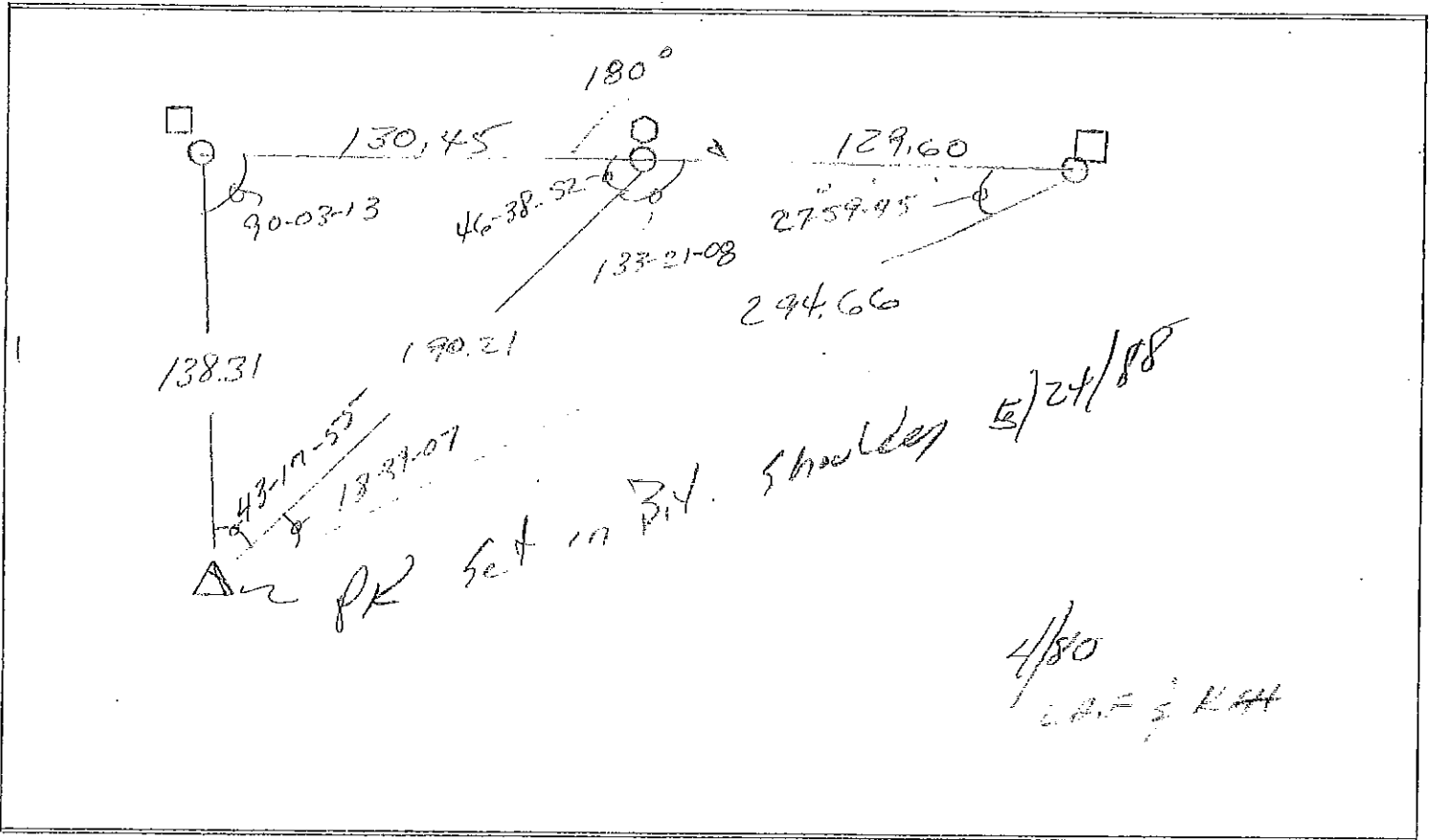
COUNTY <i>Grant</i>		
TOWN <i>Jamestown</i>		
HIGHWAY <i>151 & 35</i>		
SECTION <i>32</i>	TOWNSHIP <i>1N</i>	RANGE <i>2.W</i>
TYPE OF LANDMARK <i>Iron Pipe before Const.</i>		



LOCATION SKETCH
 (Location of landmark indicated by "x")



This space for copy of field notes or ties to the above described landmarks



- = ALUMINUM MONUMENT
- = RIGHT OF WAY POST
- ⊙ = WITNESS POST
- △ = SECTION CORNER LOCATION

COUNTY CLERK'S OFFICE	
COUNTY OF	WISCONSIN 55
DATE RECEIVED FOR RECORD	DATE COPY SENT TO COUNTY SURVEYOR
SIGNATURE OF COUNTY CLERK	