

U.S. Public Land Survey Monument Record

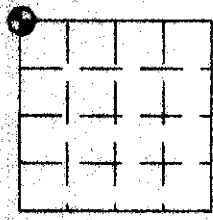
(a) Identify the corner by reference to the U.S. public land survey system.

This record shall show the location of the corner and shall include all of the following nine elements (a through i).

Sec. 33, T 1 N, R 2 W

 = Corner monument restored.

The *NW* corner of the *NW* quarter of Section 33,
Town 1 North, Range 2 _____, JAMESTOWN Twp.,
GRANT County, Wisconsin.

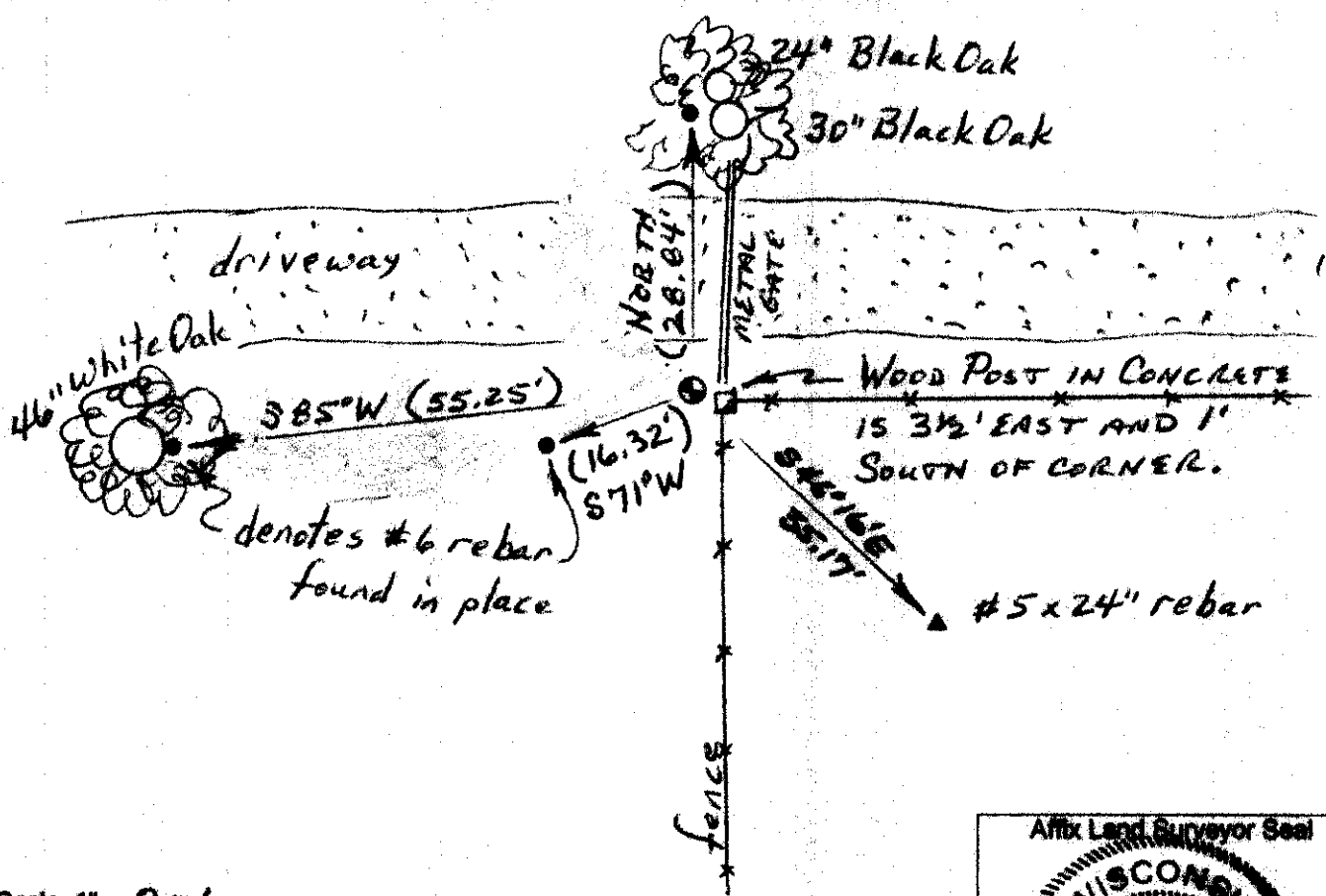


(f) The corner was restored through acceptance of
(1) an obliterated evidence location
(2) a found perpetuated location
(3) ~~other~~ other appropriate methods

(b) Describe any record evidence, monument evidence, occupational evidence, testimonial evidence or any other material evidence you considered, and whether the monument was placed or found.

FOUND AND ACCEPTED THE ALUMINUM MONUMENT FROM RECORD DATED APRIL 24, 1978. THE TOP 6" IS BROKEN OFF AND BURIED BY THE MONUMENT BUT ALL TIES WERE FOUND IN PLACE

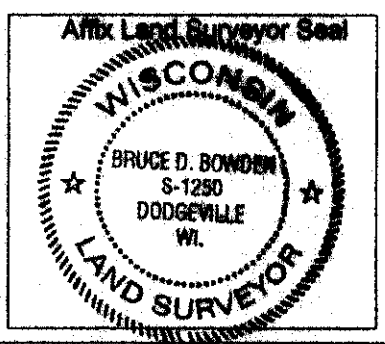
(c, d, e, g, h, i) Plan view drawing below, provide reference ties to at least 4 witness monuments, or, if the location is within a municipality, to at least 2 witness monuments. Depict the relevant monuments and reference ties in sufficient detail to enable accurate relocation of the corner monument, if disturbed. Indicate North. Describe any material discrepancy between the location of the corner as restored or reestablished and the location of that corner as previously monumented by distance and direction. Show the discrepancy on the plan view and the distances between the corner as previously monumented. If the corner was reestablished through lost corner proportionate methods, show the method, including the directions and distances to other public land survey corners used for proportioning in determining the corner location.



Scale: 1" = 20'

(i) I, Bruce D. Bowden do certify that the corner location shown on this record was determined by me or under my direction and control and that this U.S. Public Land Survey Monument Record is correct and complete to the best of my knowledge and belief.

Bruce D. Bowden 4/7/15
Signature Date



SECTION CORNER TIES

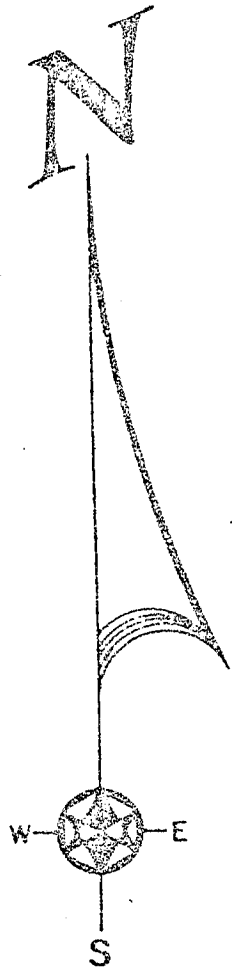
TO THE SOUTHWEST CORNER OF SECTION 28, TOWN 1 NORTH,
RANGE 2 WEST, FOURTH PRINCIPLE MERIDIAN, JAMESTOWN
TOWNSHIP, GRANT COUNTY, WISCONSIN.

Jamestown Sup

I, Bruce D. Bowden, hereby certify that I have
complied with the Wisconsin Statutes, the Statutes
of the United States and the rules and regulations
of the Secretary of the Interior in the location of
the corner shown below.



April 24, 1978

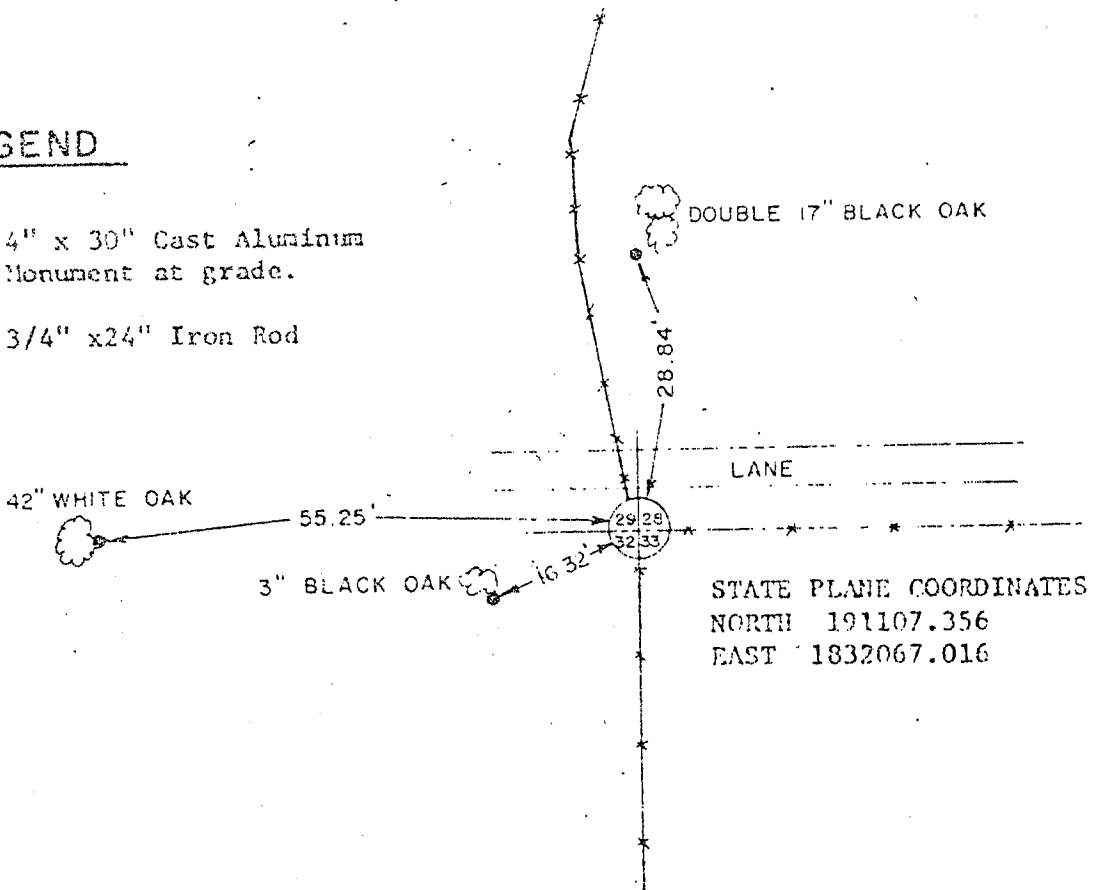
Bruce D. Bowden
Bruce D. Bowden R.L.S.-1250



Corner set by existing
physical evidence.

LEGEND

-  4" x 30" Cast Aluminum Monument at grade.
-  3/4" x 24" Iron Rod



STATE PLANE COORDINATES:
NORTH 191107.356
EAST 1832067.016

BOOK I-1 PAGE 47
JOB NO D-78007
CHECKED SJS
DRAWN BY RJO

SCALE: 1" = 20'

TALARCZYK & ASSOC., INC.

110 E. Division Street
DODGEVILLE, WI 53533

Phone 608/935-5201

109