

U.S. Public Land Survey Monument Record

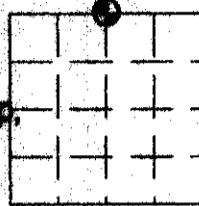
(a) Identify the corner by reference to the U.S. public land survey system.

This record shall show the location of the corner and shall include all of the following nine elements (a through i).

Sec. 33, T 1 N, R 2 W

 = Comer monument restored.

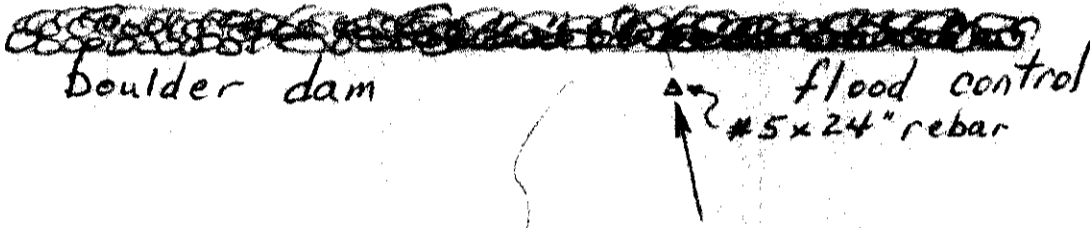
The NE corner of the NW quarter of Section, 33,
Town 1 North, Range 2 WEST, JAMESTOWN Township,
GRANT County, Wisconsin.



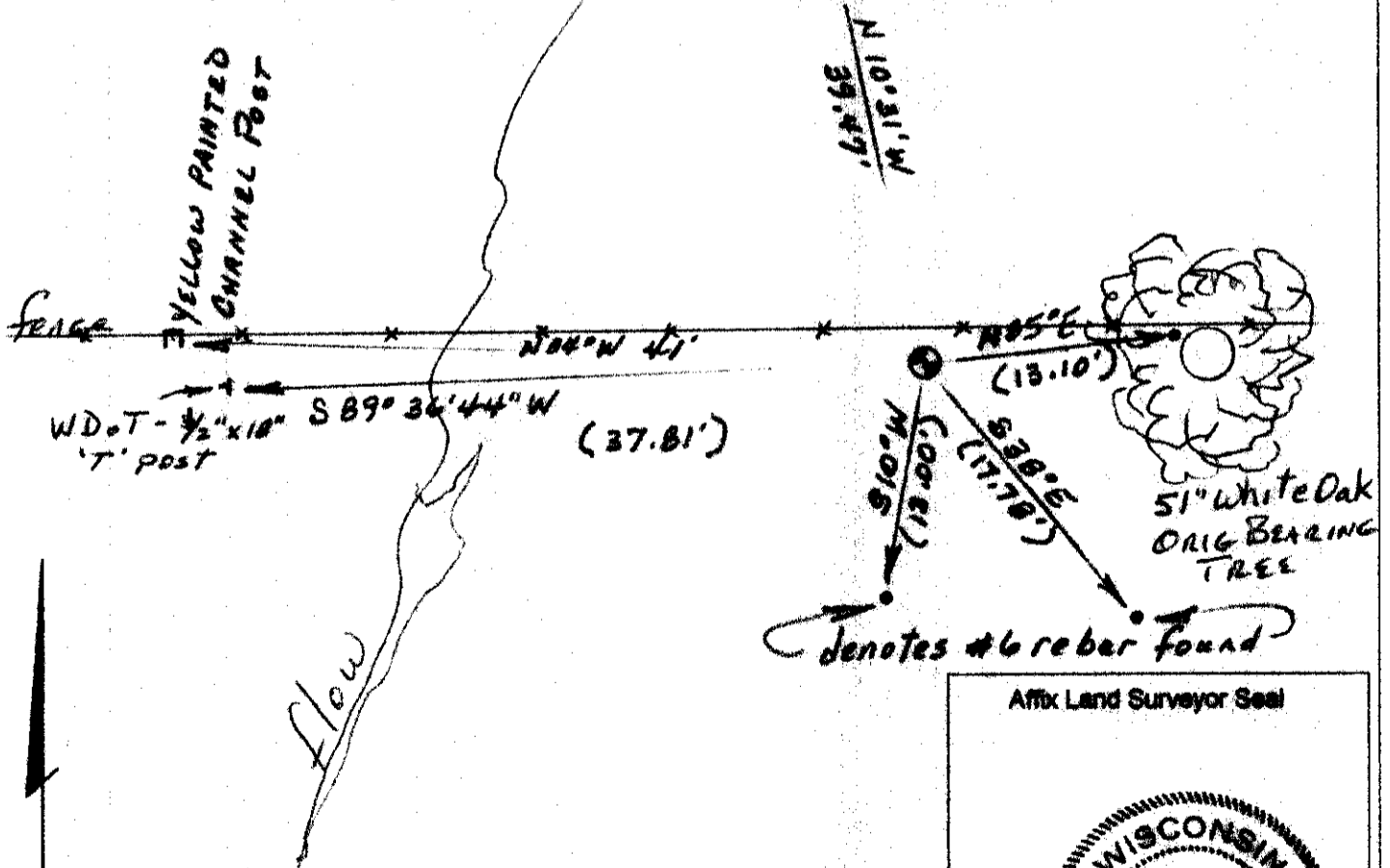
- (f) The corner was restored through acceptance of
 - (1) an obliterated evidence location
 - (2) a found perpetuated location
 - (3) lost corner proportionate methods

(b) Describe any record evidence, monument evidence, occupational evidence, testimonial evidence or any other material evidence you considered, and whether the monument was placed or found.

FOUND AND ACCEPTED THE ALUMINUM MONUMENT SET FROM THE ORIGINAL BEARING TREE, STILLGREEN, AS SHOWN ON THE RECORD DATED APRIL 24, 1978.



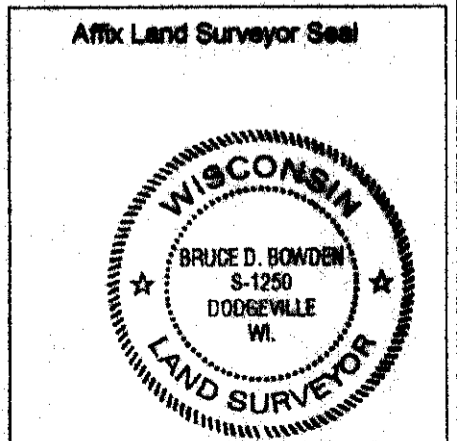
(c, d, e, g, h, i) Plan view drawing below, provide reference ties to at least 4 witness monuments, or, if the location is within a municipality, to at least 2 witness monuments. Depict the relevant monuments and reference ties in sufficient detail to enable accurate relocation of the corner monument, if disturbed. Indicate North. Describe any material discrepancy between the location of the corner as restored or reestablished and the location of that corner as previously monumented by distance and direction. Show the discrepancy on the plan view and the distances between the corner as previously monumented. If the corner was reestablished through lost corner proportionate methods, show the method, including the directions and distances to other public land survey corners used for proportioning in determining the corner location.



Scale: 1" = 10'

(i) I, Bruce D. Bowden do certify that the corner location shown on this record was determined by me or under my direction and control and that this U.S. Public Land Survey Monument Record is correct and complete to the best of my knowledge and belief.

Bruce D. Bowden 4/7/15
Signature Date



SECTION CORNER TIES

TO THE SOUTH 1/4 CORNER OF SECTION 28, TOWN 1 NORTH,
RANGE 2 WEST, FOURTH PRINCIPLE MERIDIAN, JAMESTOWN
TOWNSHIP, GRANT COUNTY, WISCONSIN.

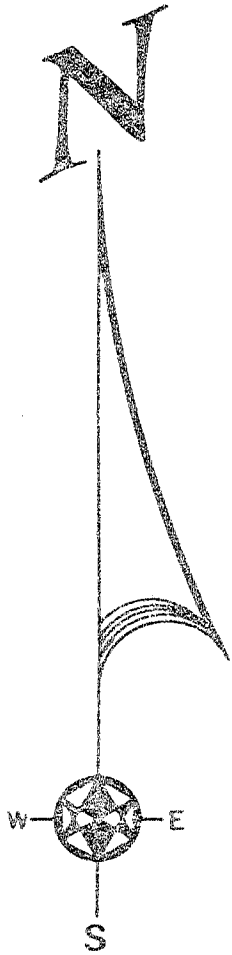
April 24, 1978

I, Bruce D. Bowden, hereby certify that I have
complied with the Wisconsin Statutes, the Statutes
of the United States and the rules and regulations
of the Secretary of the Interior in the location of
the corner shown below.

April 24, 1978

Bruce D. Bowden
Bruce D. Bowden R.L.S.-1250

Corner set by existing
physical evidence.



LEGEND



4" x 30" Cast Aluminum Monument at grade.

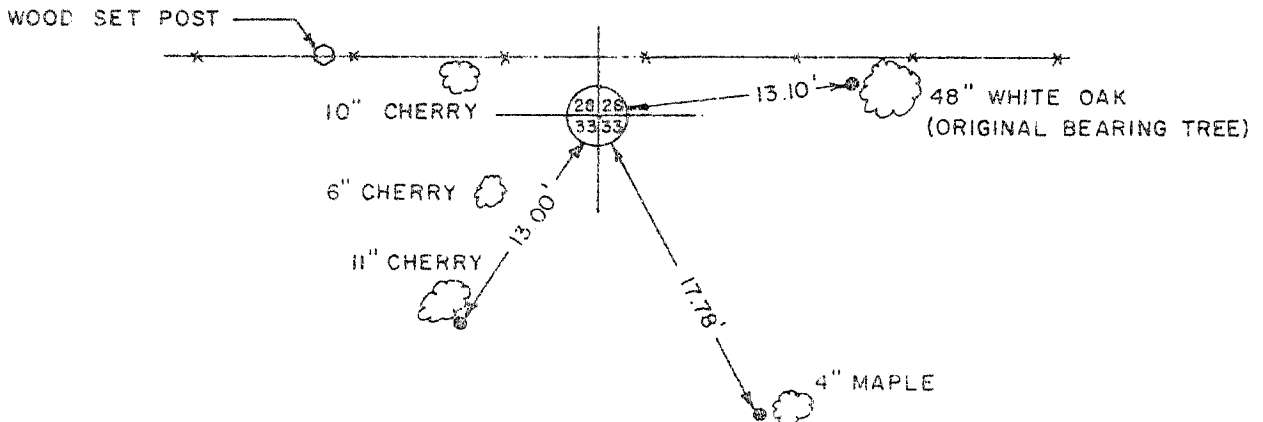


3/4" x 24" Iron Rod

STATE PLANE COORDINATES:

NORTH 191099.941

EAST 1834738.290



TALARCZYK & ASSOC., INC.

110 E. Division Street

DODGEVILLE, WI 53533

Phone 608/935-5301

BOOK D-1 PAGE 47
JOB NO. D-78007
CHECKED RSM
DRAWN BY RSM

SCALE: 1" = 10'

R-108