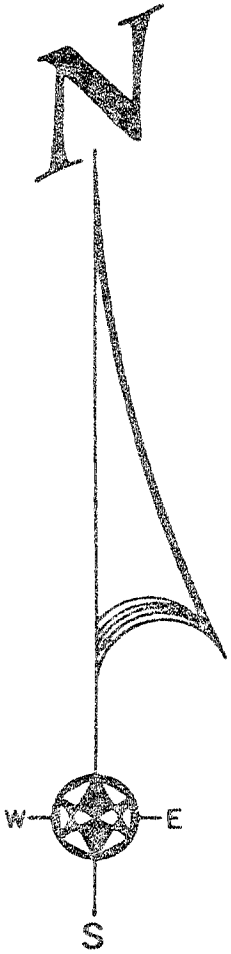


# SECTION CORNER TIES

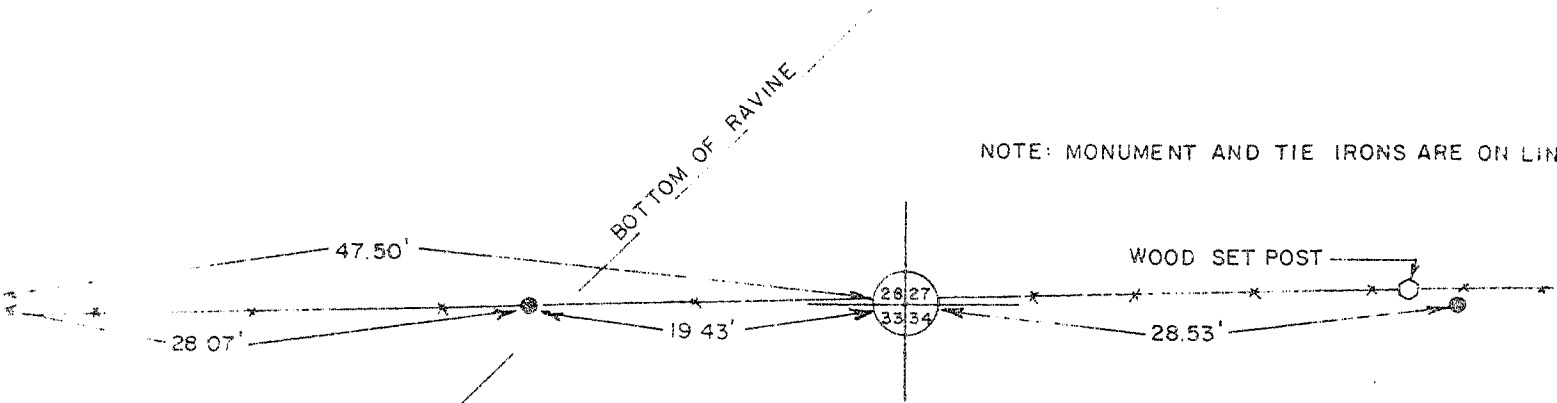
*Jamestown*

SECTION CORNER TIES - 110 E. DIVISION STREET, DODGEVILLE, WISCONSIN  
 SECTION CORNER TIES - 110 E. DIVISION STREET, DODGEVILLE, WISCONSIN  
 SECTION CORNER TIES - 110 E. DIVISION STREET, DODGEVILLE, WISCONSIN



*D. E. [unclear]*

SECTION CORNER TIES - 110 E. DIVISION STREET, DODGEVILLE, WISCONSIN  
 SECTION CORNER TIES - 110 E. DIVISION STREET, DODGEVILLE, WISCONSIN  
 SECTION CORNER TIES - 110 E. DIVISION STREET, DODGEVILLE, WISCONSIN



NOTE: MONUMENT AND TIE IRONS ARE ON LINE

## LEGEND

- 4 x 30" ROUND CAST ALUMINUM MONUMENT (TOP AT GRADE)
- 3/4" x 24" IRON ROD

CORNER SET BY EXISTING PHYSICAL EVIDENCE AND DOUBLE PROPORTIONATE MEASUREMENT.

BOOK D-1 PAGE 47  
 JOB NO. D-78007  
 CHECKED RJM  
 DRAWN BY RJM

SCALE: 1" = 10'

**TALARCZYK & ASSOC., INC.**

110 E. Division Street  
 DODGEVILLE, WI 53533

Phone 608/935-5301

*PH 107*