

Prepare's Name: Kenneth L. Buesing Address: 1212 Locust St. Dubuque, IA Telephone: (563) 556-4389

SLSI 9-94

**UNITED STATES PUBLIC LAND SURVEY MONUMENT RECORD**

OF

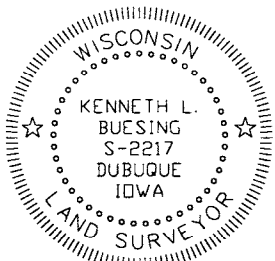
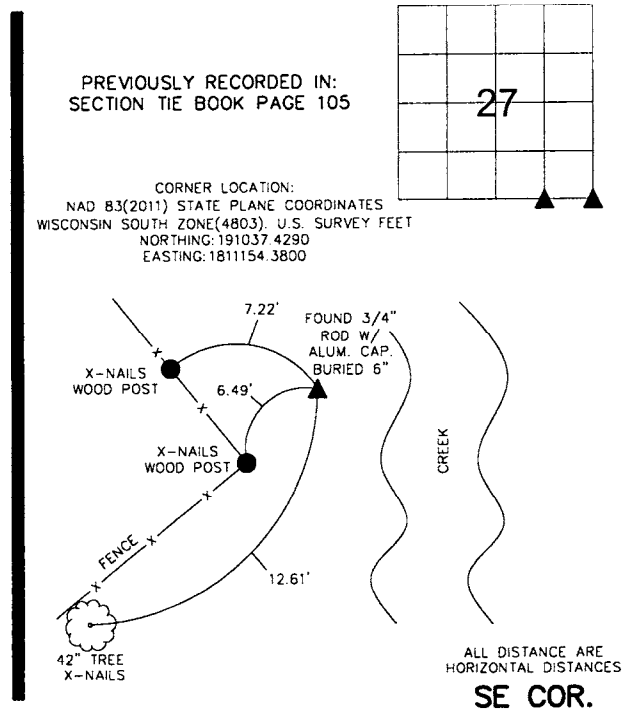
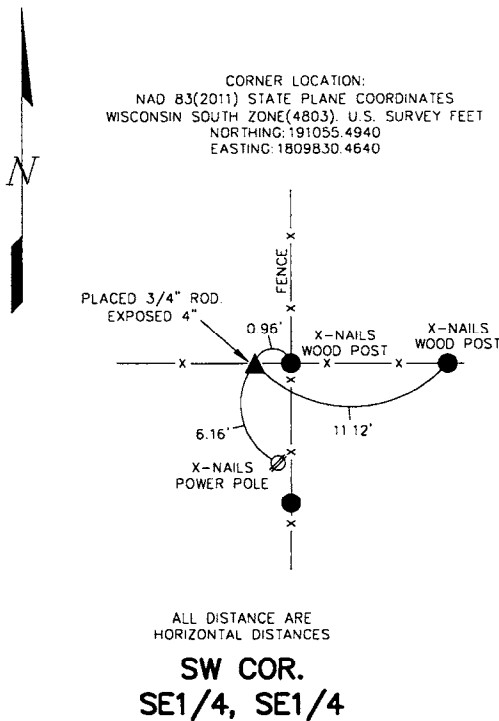
Land Survey Monuments situated in Section 27, Township 1N, Range 2W, of the Fifth Principal Meridian, GRANT County, Wisconsin. Previously recorded in SEE BELOW in County Recorder's Office.  
(book, page, document number, etc.)

(Show reason for preparing this certificate, the evidence and detailed procedures used in establishing the corner positions and monumentation found or placed.)

Monument Description and Remarks: **FOUND 3/4" ROD W/ ALUM. CAP @ THE SE CORNER. BURIED 6"**  
**SET 3/4" ROD MIDWAY BETWEEN THE S/14 & SE CORNER. EXPOSED 4"**

**PLAN - VIEW**

(Show a minimum of three reference ties to durable physical objects, relevant monuments and physical conditions that will enable recovery of the corner.)



I HEREBY CERTIFY THAT THIS LAND SURVEYING DOCUMENT WAS PREPARED AND THE RELATED SURVEY WORK WAS PERFORMED BY ME OR UNDER MY DIRECT PERSONAL SUPERVISION AND THAT I AM A DULY LICENSED LAND SURVEYOR UNDER THE LAWS OF THE STATE OF WISCONSIN.

KENNETH L. BUESING \_\_\_\_\_ (DATE)

LICENSE NUMBER S-2217

MY LICENSE RENEWAL DATE IS JANUARY 31, 2016

Corners	Section	Twp	Range
SW COR. SE1/4, SE1/4	27	1N	2W
SE COR.	27	1N	2W

<p>1212 LOCUST ST, DUBUQUE, IA (563) 556-4389</p>	MONUMENT RECORD			
	COUNTY: <u>GRANT</u> TOWNSHIP: <u>JAMESTOWN</u>		DATE PLOTTED: <u>2-10-15</u> DATE REVISED: _____	FIELD BOOK # <u>170</u> PAGE # <u>45 &amp; 46</u>

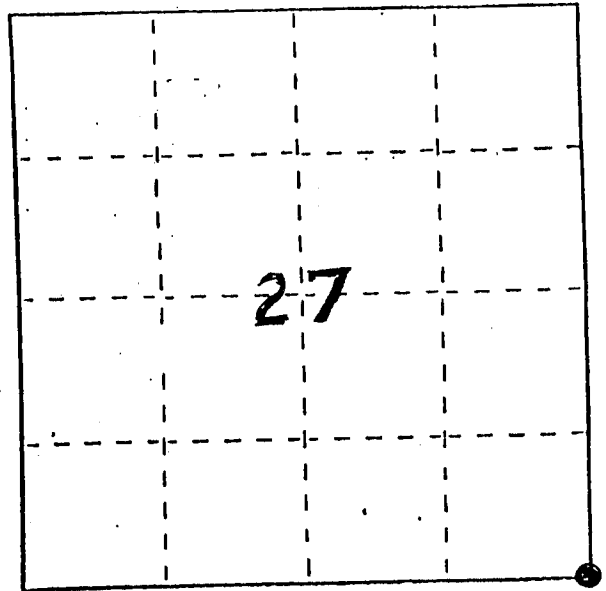
FEB 17 2015

# U. S. PUBLIC LAND SURVEY MONUMENT RECORD

**INSTRUCTIONS:** This record shall show the location of the corner and shall include all of the following nine elements (a through i).

- (a) Identify the corner by reference to the U.S. public land survey system.  
 ● = Corner monument restored.

SE CORNER, SEC. 27,  
 T1N, R2W, JAMESTOWN TWP.,  
 GRANT CO., WISC.



- (b) Describe any record evidence, monument evidence, occupational evidence, testimonial evidence or any other material evidence you considered, and whether the monument was found or placed.  
 MONUMENT PLACED AT LOCATION OF FENCE-INTERSECTIONS  
 BASED ON OCCUPATIONAL EVIDENCE & VERIFIED BY  
 EDM TRAVERSE OF THE AREA.

- (c) In the plan view drawing below, provide reference ties to at least 4 witness monuments, or, if the location is within a municipality, to at least 2 witness monuments. (Witness monuments shall be made of concrete, natural stone, iron or other equally durable material.)  
 Describe witness monuments.

- (d) Show a plan view drawing depicting the relevant monuments and reference ties which is sufficient in detail to enable accurate relocation of the corner monument if the corner monument is disturbed. Indicate north.

RECORDED

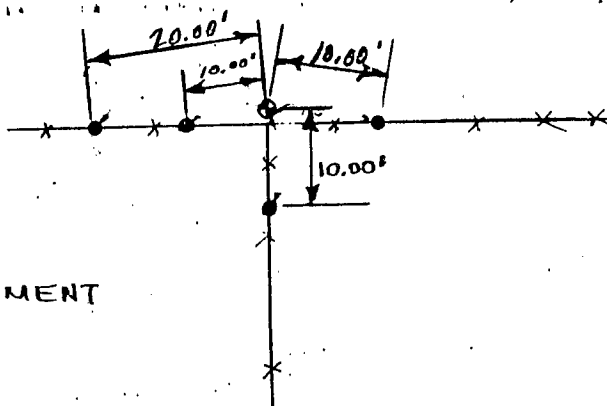
FEB 27 1989



NO SCALE

**LEGEND**

- = 1/2" x 18" REBAR
- ⊙ = GRANT CO. ALUM. MONUMENT
- \*-\*- = EXISTING FENCE

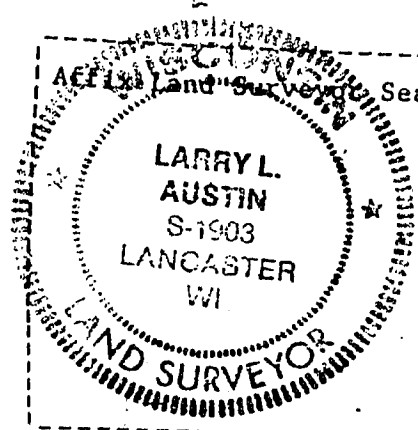


(e) Describe any material discrepancy between the location of the corner as restored or reestablished and the location of that corner as previously restored or reestablished by distance and direction. Show the discrepancy on the plan view drawing under (d). above. Show the distances between the corner as previously restored or reestablished and (1) the corner as restored or reestablished, and (2) to at least 2 of the witness monuments shown on the drawing in (d), above.

NONE

(f) Was the corner restored through acceptance of (1) an obliterated evidence location, or, (2) found perpetuated location? FOUND PERPETUATED LOCATION

(g&h) Was the corner reestablished through lost corner proportionate methods? If so, show the method, including the directions and distances to other public land survey corners used as evidence or used for proportioning in determining the corner location? NO



(i) I, LARRY L. AUSTIN  
(type or print name) certify that the corner location shown on this record was determined by me or under my direction and control and that this U.S. Public Land Survey Monument Record is correct and complete to the best of my knowledge and belief.

Larry L. Austin      8/29/88  
Signature      Date