

MAR 24 2000

GRANT COUNTY CERTIFIED LAND CORNER

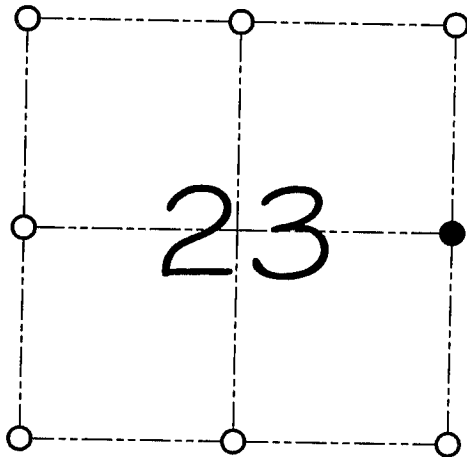
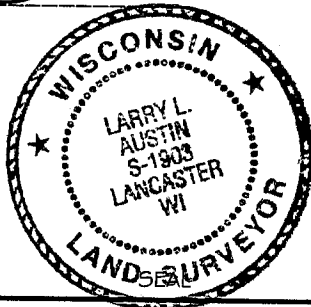
CORNER NUMBER 79

CERTIFICATE:

I, Larry L. Austin, do hereby certify that on the 1st day of February, 2000, I found evidence of the East 1/4 corner of Section 23, Town 1 North, Range 2 West, of the 4th Principal Meridian, and I re-established said corner according to the Wisconsin statutes as shown and described hereon.

Dated this Tenth day of February, 2000

Larry L. Austin
Larry L. Austin S-1903



● = CORNER LOCATION

**EAST 1/4 CORNER OF
SECTION 23, T 1 N R 2 W
TOWN OF JAMESTOWN**

HISTORY OF ORIGINAL CORNER ESTABLISHMENT:

The original corner was set in 1832 by Lucius Lyon.
An unfiled C.S.M. by Steven Rossman located the corner.

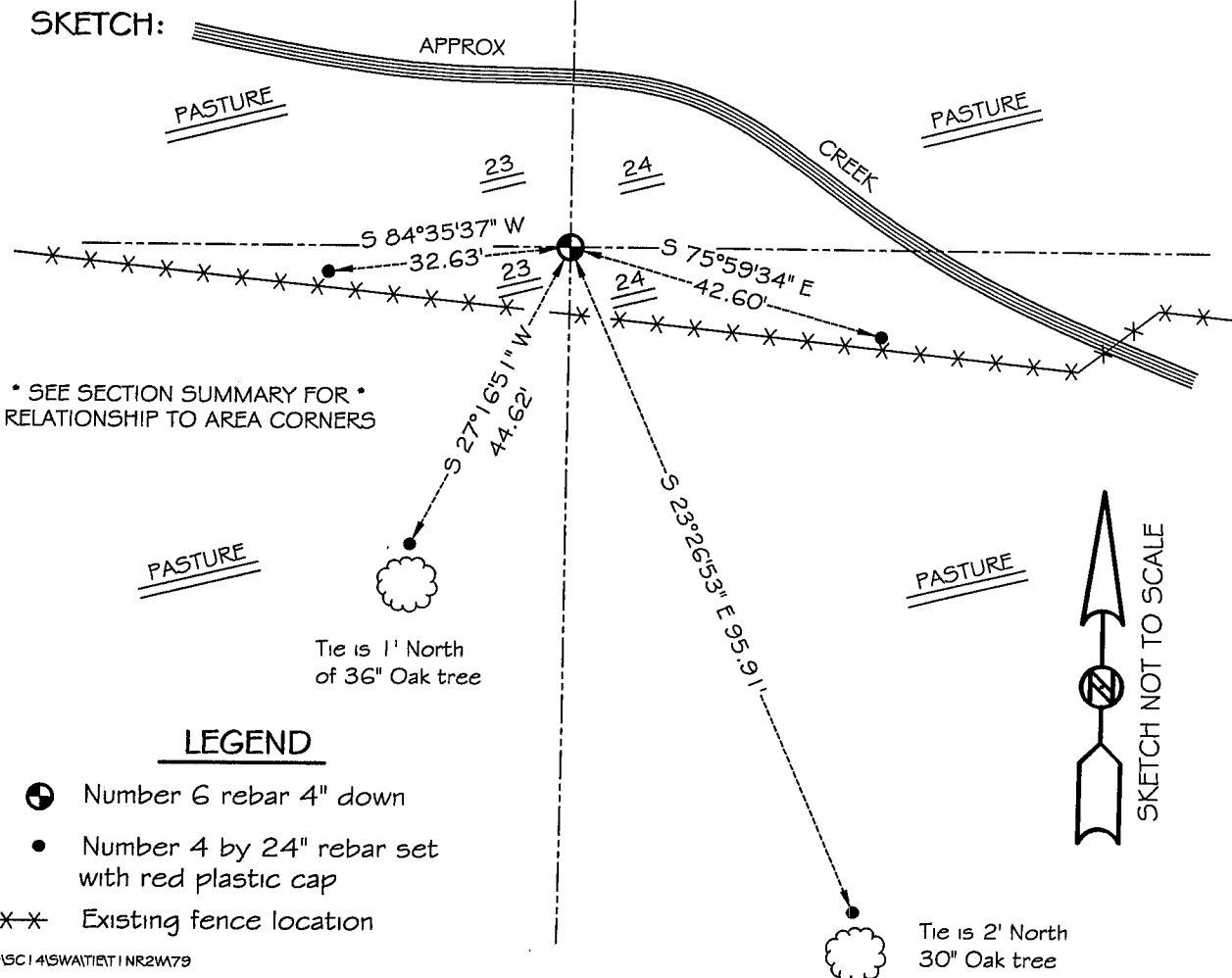
DESCRIPTION OF CORNER EVIDENCE FOUND:

I found the # 6 iron rod found by Steven Rossman. I accepted its location after an E.D.M. and G.P.S. traverse of the area.

DESCRIPTION OF CORNER AND WITNESS MONUMENTS, references and accessories used to perpetuate the original or re-established location of this corner

WITNESS TO THE CORNER LOCATION: SHANE AUSTIN # BOBBY SEDGWICK

SKETCH:



* SEE SECTION SUMMARY FOR *
RELATIONSHIP TO AREA CORNERS

LEGEND

- ⊕ Number 6 rebar 4" down
- Number 4 by 24" rebar set with red plastic cap
- x-x- Existing fence location