

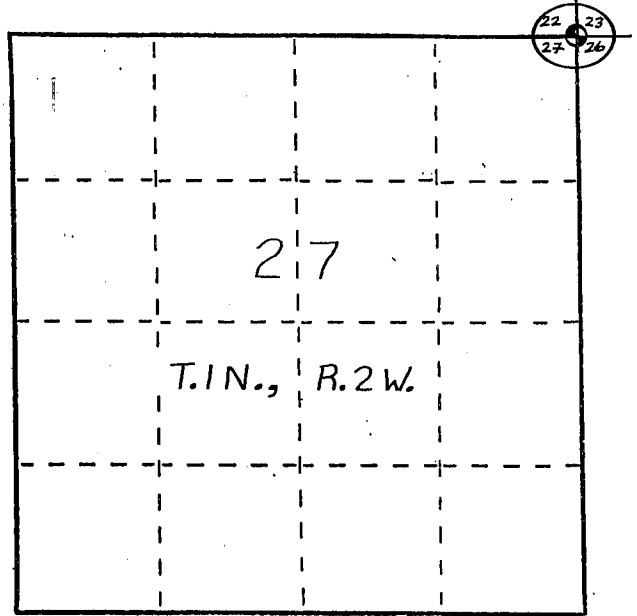
# U. S. PUBLIC LAND SURVEY MONUMENT RECORD

INSTRUCTIONS: This record shall show the location of the corner and shall include all of the following nine elements (a through i).

(a) Identify the corner by reference to the U.S. public land survey system.

○ = Corner monument restored.

The Northeast Corner of Section 27,  
Town 1 North, Range 2 West,  
Jamestown Township, Grant County,  
Wisconsin.

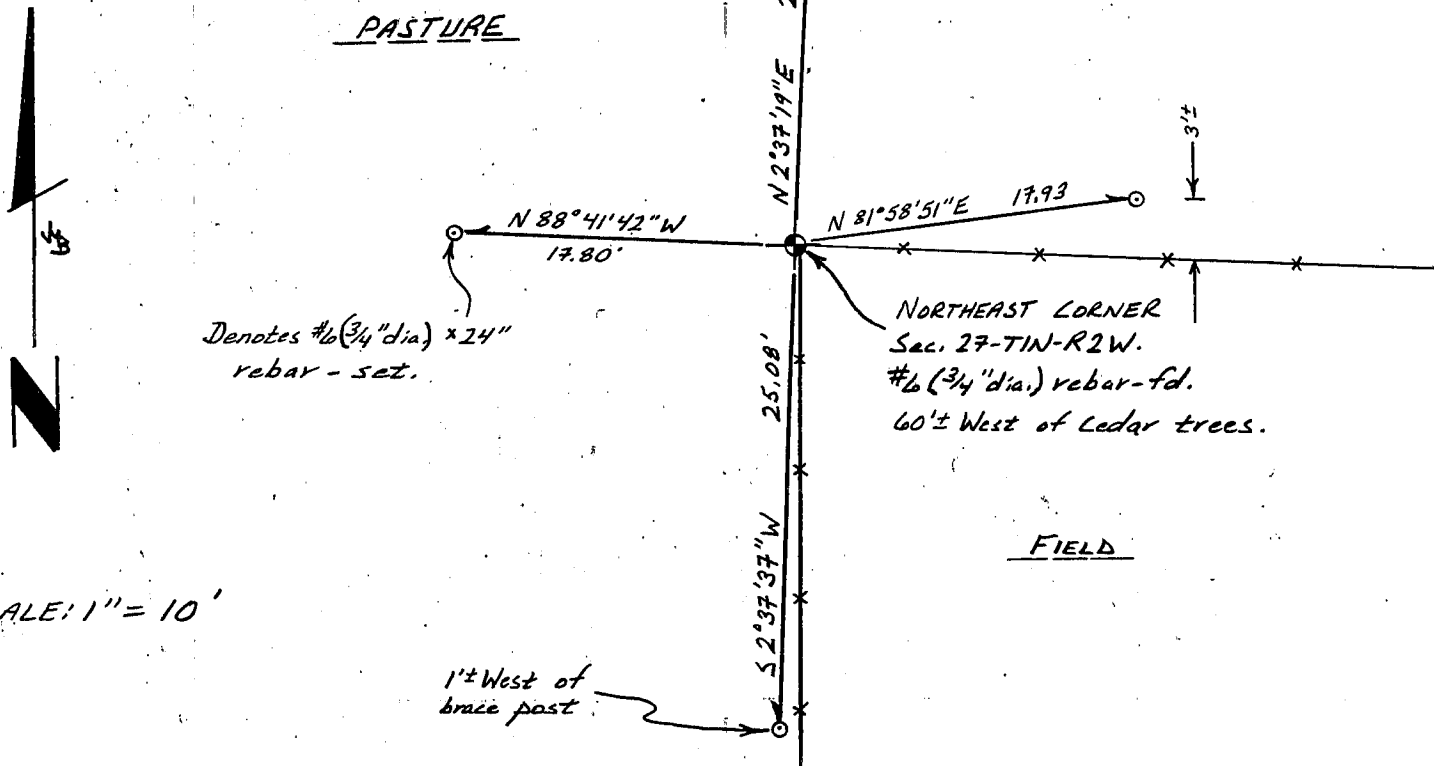


(b) Describe any record evidence, monument evidence, occupational evidence, testimonial evidence or any other material evidence you considered, and whether the monument was found or placed.

A 3/4" dia. rebar noted on a tie sheet by Ronald J. Turner (3/29/1989), and tied to numerous surveys in the area, was found and accepted as the corner location.

(c) In the plan view drawing below, provide reference ties to at least 4 witness monuments, or, if the location is within a municipality, to at least 2 witness monuments. (Witness monuments shall be made of concrete, natural stone, iron or other equally durable material, ~~except~~ wood.) Describe witness monuments.

(d) Show a plan view drawing depicting the relevant monuments and reference ties which is sufficient in detail to enable accurate relocation of the corner monument if the corner monument is disturbed. Indicate north.



(e) Describe any material discrepancy between the location of the corner as restored or reestablished and the location of that corner as previously restored or reestablished by distance and direction. Show the discrepancy on the plan view drawing under (d), above. Show the distances between the corner as previously restored or reestablished and (1) the corner as restored or reestablished, and (2) to at least 2 of the witness monuments shown on the drawing in (d), above.

*None.*

(f) Was the corner restored through acceptance of (1) an obliterated evidence location, or, (2) a found perpetuated location?

*A found perpetuated location.*

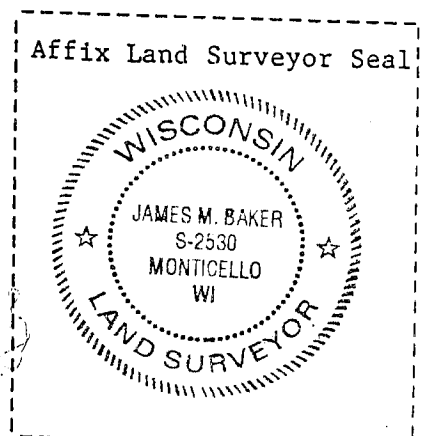
(g&h) Was the corner reestablished through lost corner proportionate methods? If so, show the method, including the directions and distances to other public land survey corners used as evidence or used for proportioning in determining the corner location?

*No.*

(i) I, James M. Baker  
(type or print name) certify that the corner location shown on this record was determined by me or under my direction and control and that this U.S. Public Land Survey Monument Record is correct and complete to the best of my knowledge and belief.

James M. Baker  
Signature

9/13/2001  
Date



JUL 25 1989

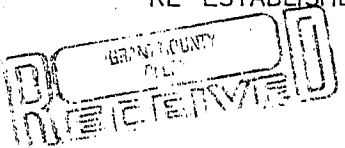
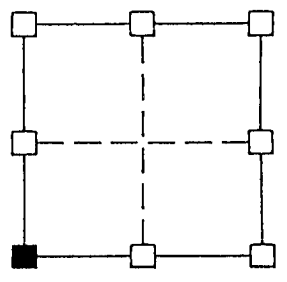
U. S. PUBLIC LAND SURVEY MONUMENT RECORD

GRANT COUNTY, WISCONSIN

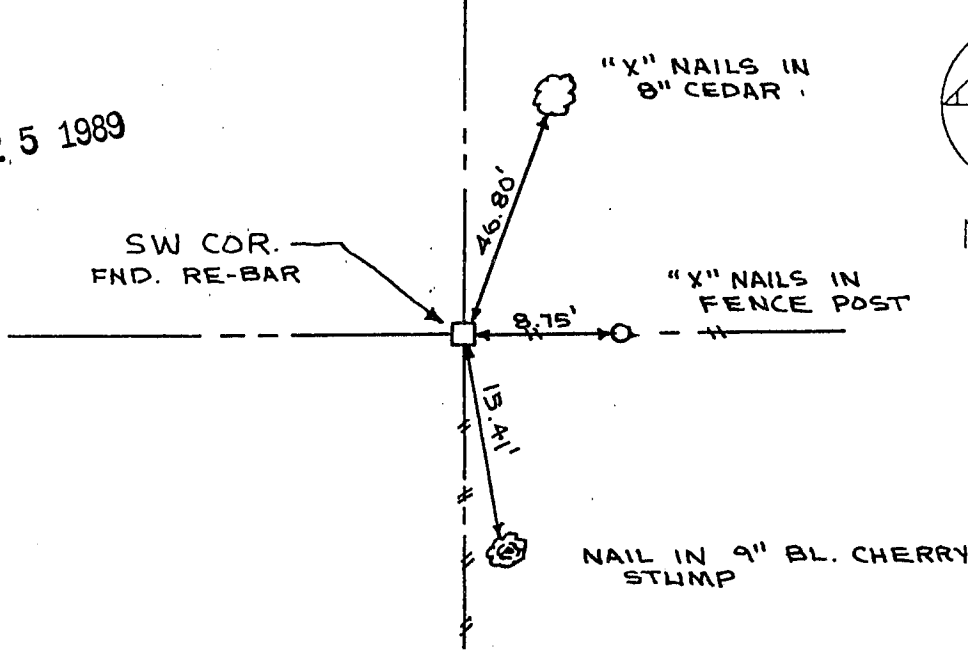
SECTION 23 TOWNSHIP 1 N. RANGE 2 W. CORNER SW  
EVIDENCE FOUND #6 REBAR

MONUMENT: FOUND  PLACED

- METHOD: ACCEPTED EXISTING LOCATION
- ACCEPTED OCCUPATION
- LOST CORNER PORPORTION METHODS
- RE-ESTABLISHED FROM TIES



JUL 25 1989



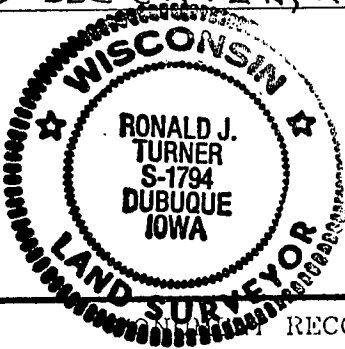
LEGEND

- GOVERNMENT CORNER
- EXISTING FENCE LINES
- ⊗ POWER POLE
- EXISTING IRON AS SHOWN
- PLACED REBAR AS SHOWN

HISTORY & OTHER INFORMATION CORNER MAY HAVE BEEN PLACED FROM SURVEY DATED 6-11-76 & 8-23-76 FOR CYRIL DROESSLER BY DAVID K. KROHN WHO SUBDIVIDED SEC 27 T1 N, R2 W OF 4TH PM

I HEREBY CERTIFY THAT THIS MONUMENT RECORD WAS MADE BY ME OR UNDER MY DIRECT PESONAL SUPERVISION AND THAT I AM A DULY REGISTERED LAND SURVEYOR UNDER THE LAWS OF THE STATE OF WISCONSIN.

*Ronald J. Turner*  
RONALD J. TURNER WISCONSIN REG. NO. S-1794 MARCH 29 1989



**W** ENGINEERS & SURVEYORS P.C.

3210 ST. JOSEPH DR. DUBUQUE, IA 52001 (319)556-2464  
P.O. BOX 275 GALENA, IL 61038 (815) 777-0359  
302 S. RIVER PARK DR. GUTHRIEBURG, IA (319)252-3823

TITLE	RECORD JAMESTOWN TOWNSHIP SECTION 23		
DATE	3-29-89	SCALE	NO. SCALE
DRAWN	JPK	FIELD BOOK	401
REVISION		REVIEWED	RJT
		PROJECT NO.	89715

2-25