

GRANT COUNTY U.S. PUBLIC LAND SURVEY MONUMENT RECORD

INSTRUCTIONS: THIS RECORD SHALL SHOW THE LOCATION OF THE CORNER AND SHALL INCLUDE ALL OF THE FOLLOWING ELEMENTS (A THROUGH I)

(A) IDENTIFY THE CORNER BY REFERENCE TO THE U.S. PUBLIC LAND SURVEY SYSTEM

■ = CORNER MONUMENT RESTORED

WITNESSES TO CORNER LOCATION:

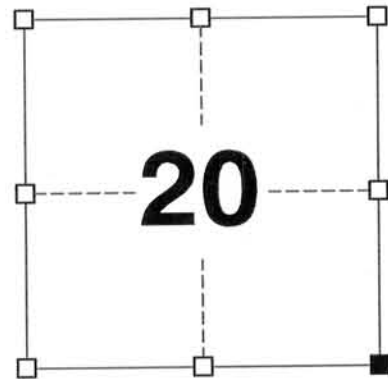
JAY P. ADAMS
JEREMY F. KRACHEY

GEOGRAPHIC COORDINATES,
NAD 83 (2011) ADJUSTMENT:

LATITUDE: 42° 32' 13.5118"
LONGITUDE: 90° 37' 20.9819"

WISCONSIN COUNTY COORDINATE SYSTEM (WCCS), GRANT COUNTY,
NAD 83 (2011) ADJUSTMENT:

NORTHING: 410,382.65
EASTING: 842,843.16



SECTION 20
TOWN 1 NORTH, RANGE 2 WEST
TOWN OF JAMESTOWN

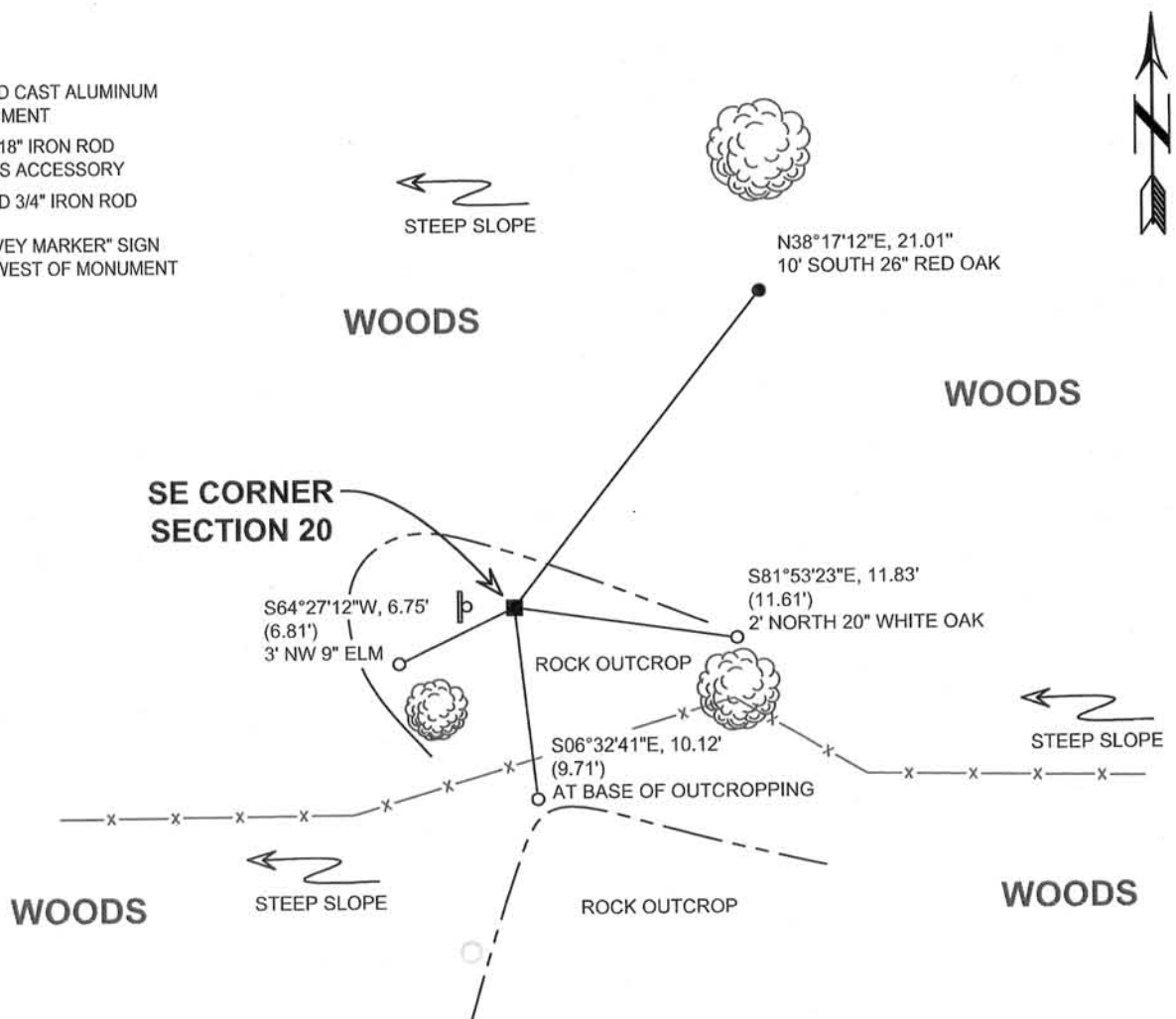
(B) DESCRIBE ANY RECORD EVIDENCE, MONUMENT EVIDENCE, OCCUPATIONAL EVIDENCE, TESTIMONIAL EVIDENCE, OR ANY OTHER MATERIAL EVIDENCE YOU CONSIDERED, AND WHETHER THE MONUMENT WAS FOUND OR PLACED.

I COULD FIND NO MONUMENTS FROM THE ORIGINAL GOVERNMENT SURVEY. I RECOVERED THE ALUMINUM MONUMENT SET BY BOWDEN ALONG WITH ALL THREE OF HIS TIES. AFTER VERIFYING ITS LOCATION WITH BOWDEN'S TIES, I ACCEPTED THE LOCATION OF THE ALUMINUM MONUMENT AS THE BEST AVAILABLE EVIDENCE OF THE ORIGINAL GOVERNMENT CORNER AND I LEFT IT IN PLACE.

(C) IN THE PLAN VIEW DRAWING BELOW, PROVIDE REFERENCE TIES TO AT LEAST 4 WITNESS MONUMENTS, (WITNESS MONUMENTS SHALL BE MADE OF CONCRETE, NATURAL STONE, IRON OR ANY OTHER EQUALLY DURABLE MATERIAL.) DESCRIBE WITNESS MONUMENTS.

(D)

- FOUND CAST ALUMINUM MONUMENT
- 3/4" x 18" IRON ROD SET AS ACCESSORY
- FOUND 3/4" IRON ROD
- ⊞ "SURVEY MARKER" SIGN 1' +/- WEST OF MONUMENT



- (E) DESCRIBE ANY MATERIAL DISCREPANCY BETWEEN THE LOCATION OF THE CORNER AS RESTORED OR REESTABLISHED AND THE LOCATION OF THAT CORNER AS PREVIOUSLY RESTORED OR REESTABLISHED BY DISTANCE AND DIRECTION. SHOW THE DISCREPANCY ON THE PLAN VIEW DRAWING UNDER (D), ABOVE. SHOW THE DISTANCES BETWEEN THE CORNER AS PREVIOUSLY RESTORED OR REESTABLISHED AND (1) THE CORNER AS RESTORED OR REESTABLISHED, AND (2) TO AT LEAST 2 OF THE WITNESS MONUMENTS SHOWN ON THE DRAWING IN (D) ABOVE.

N/A

- (F) WAS THE CORNER RESTORED THROUGH ACCEPTANCE OF (1) AN OBLITERATED EVIDENCE LOCATION, OR, (2) A FOUND PERPETUATED LOCATION?

(2) A FOUND PERPETUATED LOCATION

- (G&H) WAS THE CORNER REESTABLISHED THROUGH LOST CORNER PROPORTIONATE METHODS? IF SO, SHOW THE METHOD, INCLUDING THE DIRECTIONS AND DISTANCES TO OTHER PUBLIC LAND SURVEY CORNERS USED AS EVIDENCE OR USED FOR PROPORTIONING IN DETERMINING THE CORNER LOCATION.

N/A

CORNER HISTORY

ORIGINAL GOVERNMENT CORNER ESTABLISHED BY LUCIUS LYON IN THE 2ND QUARTER OF 1832.

WHILE PERFORMING AREA SURVEYS IN THE LATE 1950s AND 1960s, HOMER D. RALPH APPEARS TO HAVE SET A 1" x 24" IRON PIPE AT THIS CORNER

IN A TIE SHEET DATED 31 MARCH 1978, BRUCE BOWDEN SET A CAST ALUMINUM MONUMENT AT THE CORNER IN PLACE OF A 1" IRON PIPE FOUND.

SINCE THAT SURVEY, NUMEROUS AREA SURVEYORS HAVE REPORTED FINDING A CAST ALUMINUM MONUMENT AT THE CORNER.

AFFIX LAND SURVEYOR SEAL

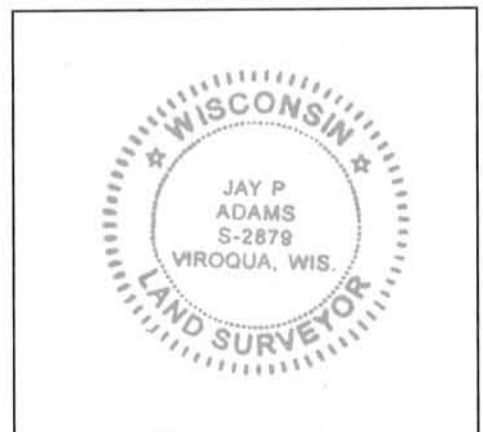
- (I) I, JAY P. ADAMS, R.L.S. 2879, CERTIFY THAT THE CORNER LOCATION SHOWN ON THIS RECORD WAS DETERMINED BY ME OR UNDER MY DIRECTION AND CONTROL AND THAT THIS U.S. PUBLIC LAND SURVEY MONUMENT RECORD IS CORRECT AND COMPLETE TO THE BEST OF MY KNOWLEDGE AND BELIEF.



SIGNATURE

28 OCTOBER 2013

DATE



GRANT COUNTY U.S. PUBLIC LAND SURVEY MONUMENT RECORD

INSTRUCTIONS: THIS RECORD SHALL SHOW THE LOCATION OF THE CORNER AND SHALL INCLUDE ALL OF THE FOLLOWING ELEMENTS (A THROUGH I)

(A) IDENTIFY THE CORNER BY REFERENCE TO THE U.S. PUBLIC LAND SURVEY SYSTEM

■ = CORNER MONUMENT RESTORED

WITNESSES TO CORNER LOCATION:

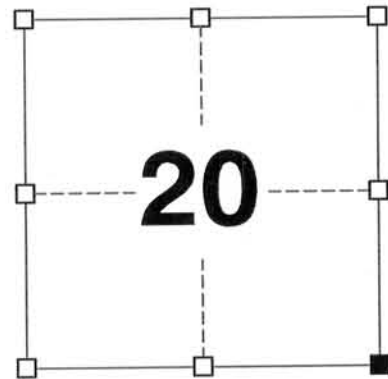
JAY P. ADAMS
JEREMY F. KRACHEY

GEOGRAPHIC COORDINATES,
NAD 83 (2011) ADJUSTMENT:

LATITUDE: 42° 32' 13.5118"
LONGITUDE: 90° 37' 20.9819"

WISCONSIN COUNTY COORDINATE SYSTEM (WCCS), GRANT COUNTY,
NAD 83 (2011) ADJUSTMENT:

NORTHING: 410,382.65
EASTING: 842,843.16



SECTION 20
TOWN 1 NORTH, RANGE 2 WEST
TOWN OF JAMESTOWN

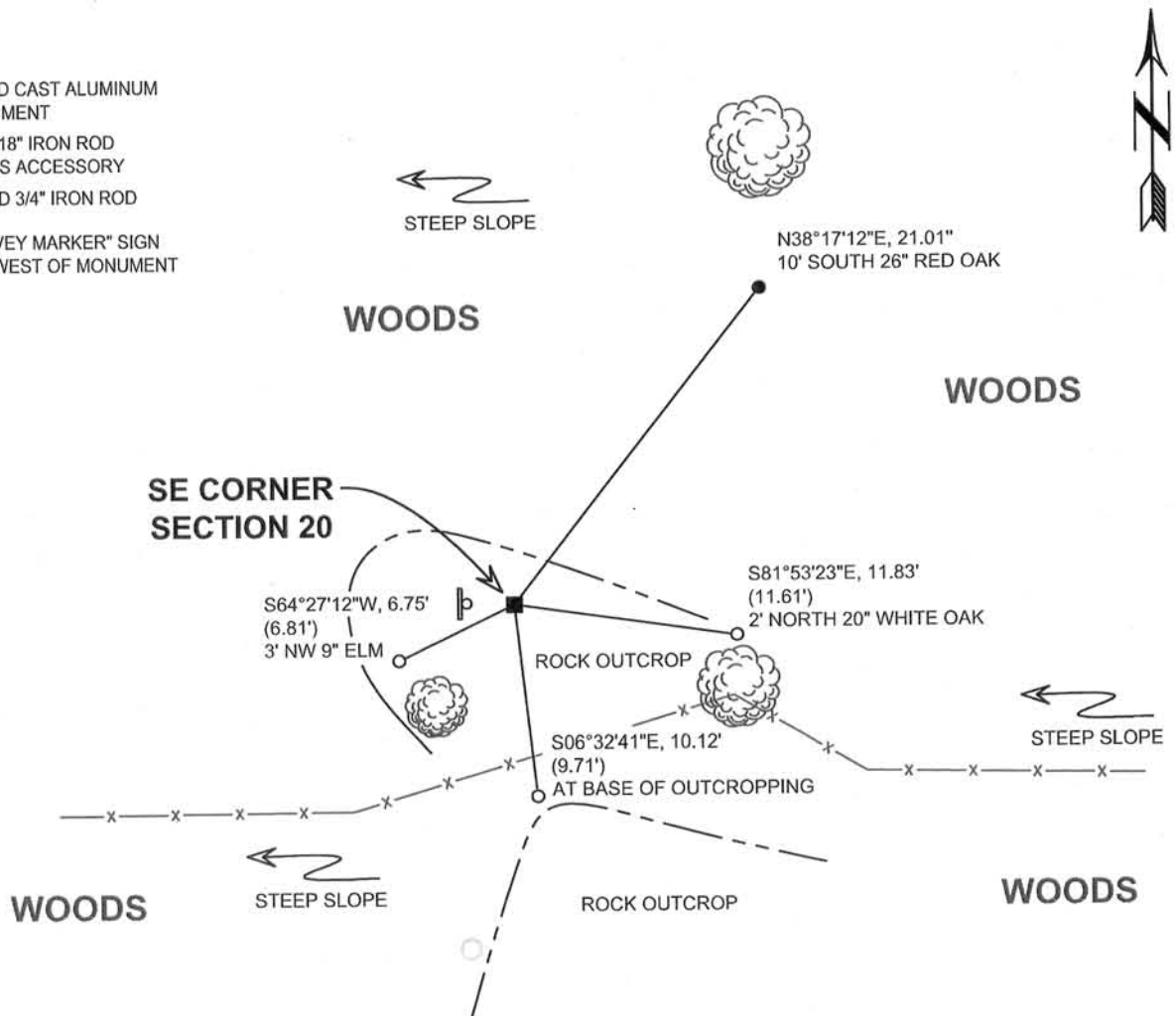
(B) DESCRIBE ANY RECORD EVIDENCE, MONUMENT EVIDENCE, OCCUPATIONAL EVIDENCE, TESTIMONIAL EVIDENCE, OR ANY OTHER MATERIAL EVIDENCE YOU CONSIDERED, AND WHETHER THE MONUMENT WAS FOUND OR PLACED.

I COULD FIND NO MONUMENTS FROM THE ORIGINAL GOVERNMENT SURVEY. I RECOVERED THE ALUMINUM MONUMENT SET BY BOWDEN ALONG WITH ALL THREE OF HIS TIES. AFTER VERIFYING ITS LOCATION WITH BOWDEN'S TIES, I ACCEPTED THE LOCATION OF THE ALUMINUM MONUMENT AS THE BEST AVAILABLE EVIDENCE OF THE ORIGINAL GOVERNMENT CORNER AND I LEFT IT IN PLACE.

(C) IN THE PLAN VIEW DRAWING BELOW, PROVIDE REFERENCE TIES TO AT LEAST 4 WITNESS MONUMENTS, (WITNESS MONUMENTS SHALL BE MADE OF CONCRETE, NATURAL STONE, IRON OR ANY OTHER EQUALLY DURABLE MATERIAL.) DESCRIBE WITNESS MONUMENTS.

(D)

- FOUND CAST ALUMINUM MONUMENT
- 3/4" x 18" IRON ROD SET AS ACCESSORY
- FOUND 3/4" IRON ROD
- ⊞ "SURVEY MARKER" SIGN 1' +/- WEST OF MONUMENT



- (E) DESCRIBE ANY MATERIAL DISCREPANCY BETWEEN THE LOCATION OF THE CORNER AS RESTORED OR REESTABLISHED AND THE LOCATION OF THAT CORNER AS PREVIOUSLY RESTORED OR REESTABLISHED BY DISTANCE AND DIRECTION. SHOW THE DISCREPANCY ON THE PLAN VIEW DRAWING UNDER (D), ABOVE. SHOW THE DISTANCES BETWEEN THE CORNER AS PREVIOUSLY RESTORED OR REESTABLISHED AND (1) THE CORNER AS RESTORED OR REESTABLISHED, AND (2) TO AT LEAST 2 OF THE WITNESS MONUMENTS SHOWN ON THE DRAWING IN (D) ABOVE.

N/A

- (F) WAS THE CORNER RESTORED THROUGH ACCEPTANCE OF (1) AN OBLITERATED EVIDENCE LOCATION, OR, (2) A FOUND PERPETUATED LOCATION?

(2) A FOUND PERPETUATED LOCATION

- (G&H) WAS THE CORNER REESTABLISHED THROUGH LOST CORNER PROPORTIONATE METHODS? IF SO, SHOW THE METHOD, INCLUDING THE DIRECTIONS AND DISTANCES TO OTHER PUBLIC LAND SURVEY CORNERS USED AS EVIDENCE OR USED FOR PROPORTIONING IN DETERMINING THE CORNER LOCATION.

N/A

CORNER HISTORY

ORIGINAL GOVERNMENT CORNER ESTABLISHED BY LUCIUS LYON IN THE 2ND QUARTER OF 1832.


WHILE PERFORMING AREA SURVEYS IN THE LATE 1950s AND 1960s, HOMER D. RALPH APPEARS TO HAVE SET A 1" x 24" IRON PIPE AT THIS CORNER

IN A TIE SHEET DATED 31 MARCH 1978, BRUCE BOWDEN SET A CAST ALUMINUM MONUMENT AT THE CORNER IN PLACE OF A 1" IRON PIPE FOUND.

SINCE THAT SURVEY, NUMEROUS AREA SURVEYORS HAVE REPORTED FINDING A CAST ALUMINUM MONUMENT AT THE CORNER.

AFFIX LAND SURVEYOR SEAL

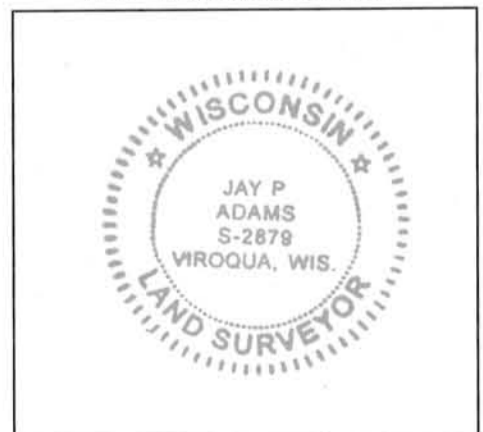
- (I) I, JAY P. ADAMS, R.L.S. 2879, CERTIFY THAT THE CORNER LOCATION SHOWN ON THIS RECORD WAS DETERMINED BY ME OR UNDER MY DIRECTION AND CONTROL AND THAT THIS U.S. PUBLIC LAND SURVEY MONUMENT RECORD IS CORRECT AND COMPLETE TO THE BEST OF MY KNOWLEDGE AND BELIEF.



SIGNATURE

28 OCTOBER 2013

DATE



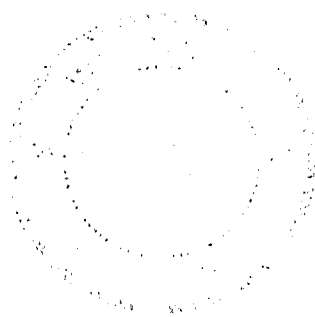
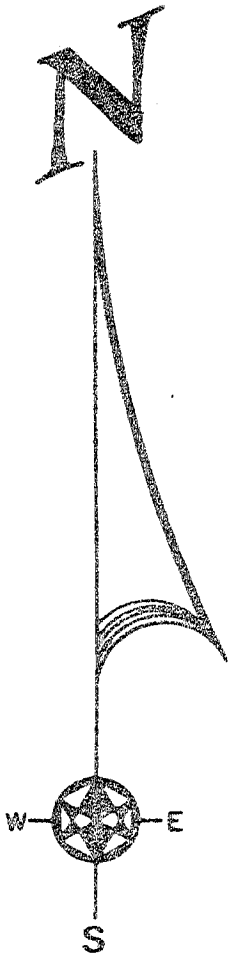
SECTION CORNER TIES

to the Southeast corner of Section 20, Town 1 North,
Range 2 West, Jamestown Township, Grant County, Wisc.

I, Bruce D. Bowden, hereby certify that
I have complied with the Wisconsin Statutes,
The Statutes of the United States, and the
rules and regulations made by the Secretary
of the Interior in the location of the corner
shown below.

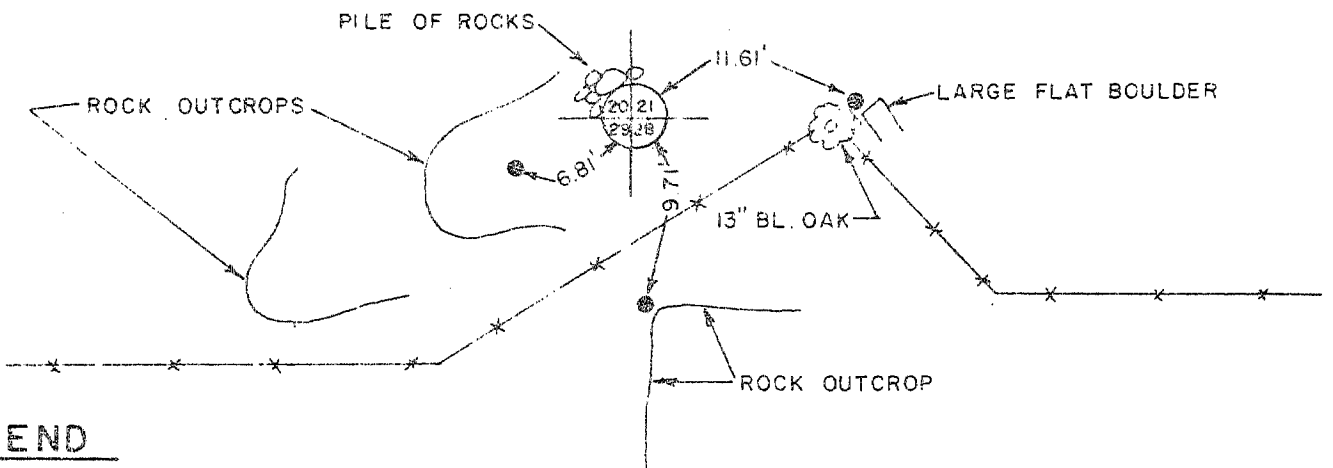
March 31, 1988

Bruce D. Bowden
Bruce D. Bowden, Surveyor



STATE OF WISCONSIN
COUNTY OF GRANT
TOWNSHIP OF JAMESTOWN
SECTION 20, TOWN 1 NORTH, RANGE 2 WEST

← SLOPE - 76 %



LEGEND



4" x 30" ROUND CAST ALUMINUM
MONUMENT (TOP AT GRADE)

CORNER SET IN PLACE OF
1" IRON PIPE FOUND.



3/4" x 24" IRON ROD

BOOK D-1 PAGE 47
JOB NO. D-78007
CHECKED RJM
DRAWN BY RJM

SCALE: 1" = 10'

TALARCZYK & ASSOC., INC.

110 E. Division Street
DODGEVILLE, WI 53533

Phone 608/935-5301

p. 89