

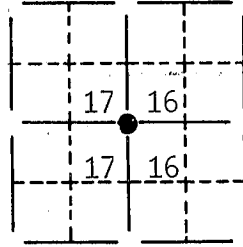
U.S. PUBLIC LAND SURVEY MONUMENT RECORD

FOR Grant COUNTY, WISCONSIN

Note: This form is intended and designed to fulfill all requirements of Wisconsin Administrative Code, Chapter A-E7.08, U.S. Public Land Survey Monument Record (3)(a)(b)(c)(d)(e)(f)(g)(h)(i). Use additional sheet if necessary.

(a) The section, one quarter corner common to sections 16, 17,
 Township(s) 01 N, Range(s) 02 W

State plane coordinates: N 204,244.7117
 E 1,832,311.1592



(b)(f)(g)(h) Description of monument found at this corner and if it was accepted, state all evidence (material, testimonial, occupational, plats, records, other monuments) used as a basis for accepting. If not accepted or nothing was found, state evidence used as basis for establishing location and what was set. If reestablished through lost corner proportionate methods, indicate all monuments, distances and directions used.

Found and accepted an existing 3/4" Iron Bar in a mound of stones at the W1/4 Corner of Sec. 16.

(c)(d)(e) Plan view of corner with ties to at least 4 witness monuments. If in disagreement with previously established corner, show the distances between the two corners and also indicate ties to disputed corner. ✓

NORTH



40d spike in 28" Oak
 North 17.41'



40d spike in 15" Oak
 N53°E 19.38'

Existing 5/8" bar at
 base of 30" stump
 N70°W 12.07'




● Fd. 3/4" Iron Bar



Existing 5/8" bar at base
 of 10" Oak S28°E 12.60'

JAN 23 1992

(i) I certify that the corner location on this record was determined by me or under my direction and control and that this U.S. Public Land Survey Monument Record is correct and complete to the best of my knowledge and belief.


 Signature

OCT 30, 1991
 Date



INDEX #

Filed for record in Grant County Surveyor's Office on _____

56

SECTION CORNER TIES

James Town

TO THE WEST 1/4 CORNER OF SECTION 16, TOWN 1 NORTH,
RANGE 2 WEST, FOURTH PRINCIPLE MERIDIAN, JAMESTOWN
TOWNSHIP, GRANT COUNTY, WISCONSIN.

I, Bruce D. Bowden, hereby certify that I have
complied with the Wisconsin Statutes, the Statutes
of the United States and the rules and regulations
of the Secretary of the Interior in the location of
the corner shown below.

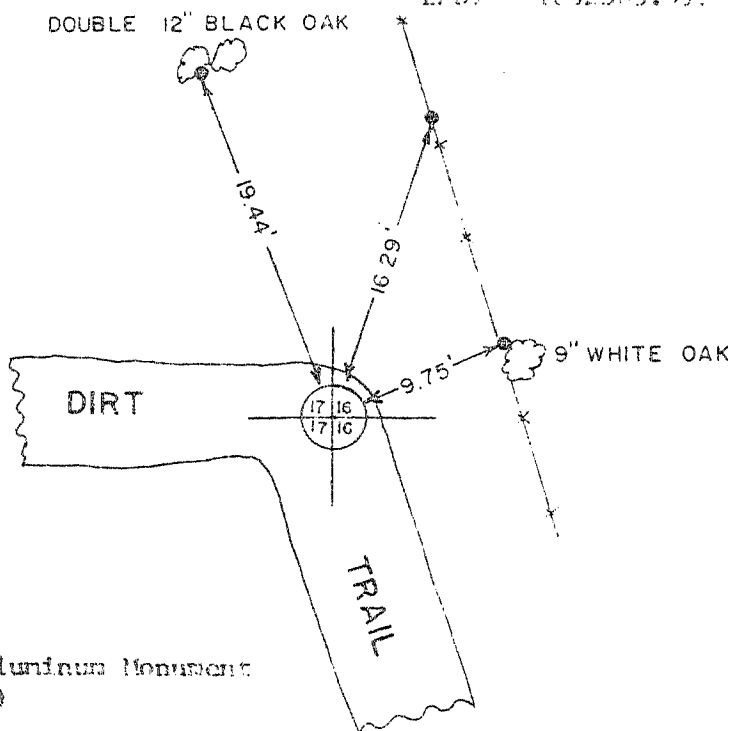
April 24, 1978

Bruce D. Bowden
Bruce D. Bowden R.L.S.-1250

Corner set by single proportionate measure.



STATE PLANE COORDINATES:
NORTH 204229.439
EAST 1832305.911



LEGEND

⊕ 4" x 30" Cast Aluminum Monument
(at grade)

• 3/4" x 24" Iron Rod

BOOK D-1 PAGE 47
JOB NO. D-78007
CHECKED RTM
DRAWN BY RTM

SCALE: 1" = 10'

TALARCZYK & ASSOC., INC.

110 E. Division Street
DODGEVILLE, WI 53533

Phone 608/935-5301

p. 50