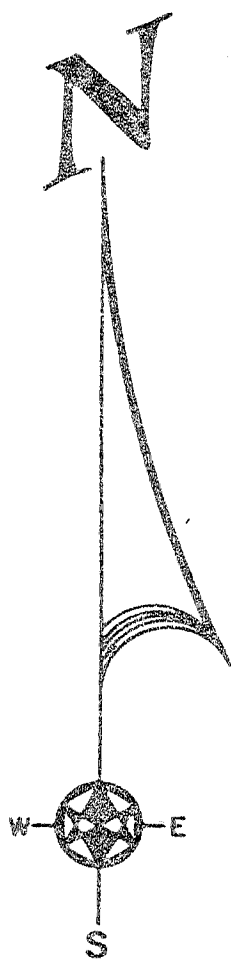


# SECTION CORNER TIES

TO BE USED IN CONNECTION WITH THE SURVEY OF SECTION 16,  
 TOWNSHIP 10N, RANGE 10E, COUNTY OF WASHINGTON, WISCONSIN.  
 THE CORNER SET FROM TIES TO PREVIOUS SURVEY BY CARL F. BARTELS DATED FEB. 1972.

*Jameson*

*Richard B...*



CORNER SET FROM TIES TO  
 PREVIOUS SURVEY BY CARL F.  
 BARTELS DATED FEB. 1972.

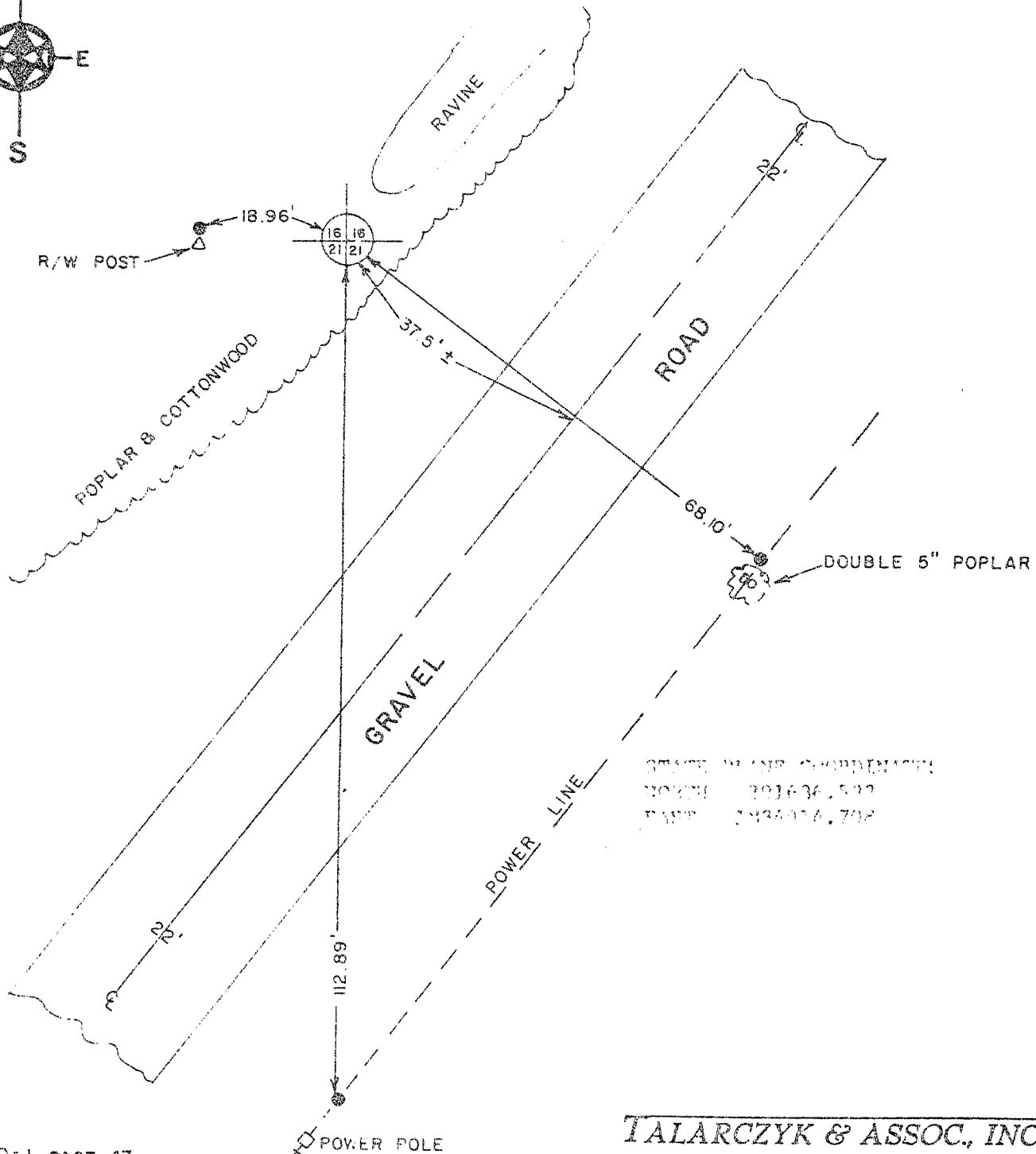
### LEGEND



4" x 30" ROUND CAST ALUMINUM  
 MONUMENT (TOP AT GRADE)



3/4" x 24" IRON ROD



STATE PLANS CORRECTIONS  
 NORTH 191636.532  
 EAST 1926076.702

BOOK D-1 PAGE 47  
 JOB NO. E-78007  
 CHECKED [Signature]  
 DRAWN BY RSM

SCALE: 1" = 20'

**TALARCZYK & ASSOC., INC.**

110 E. Division Street  
 DODGEVILLE, WI 53533

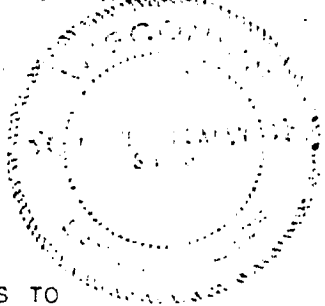
Phone 608/935-5301

*68*

# SECTION CORNER TIES

TO THE SOUTHWEST CORNER OF SECTION 16,  
 TOWN ONE NORTH, RANGE ONE WEST, OF THE FOURTH  
 PRINCIPAL MERIDIAN, T.1N. R.1W. S.46.1N.

I, Bruce D. Barden, hereby certify that I have complied with the Minnesota statutes, the Statutes of the United States, and the rules and regulations made by the Secretary of the Interior in the location of the corner as shown here.  
 March 31, 1978



*Bruce D. Barden*  
 Surveyor - Powder

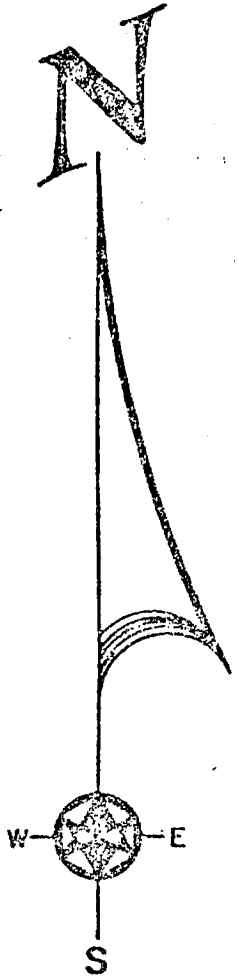
## LEGEND



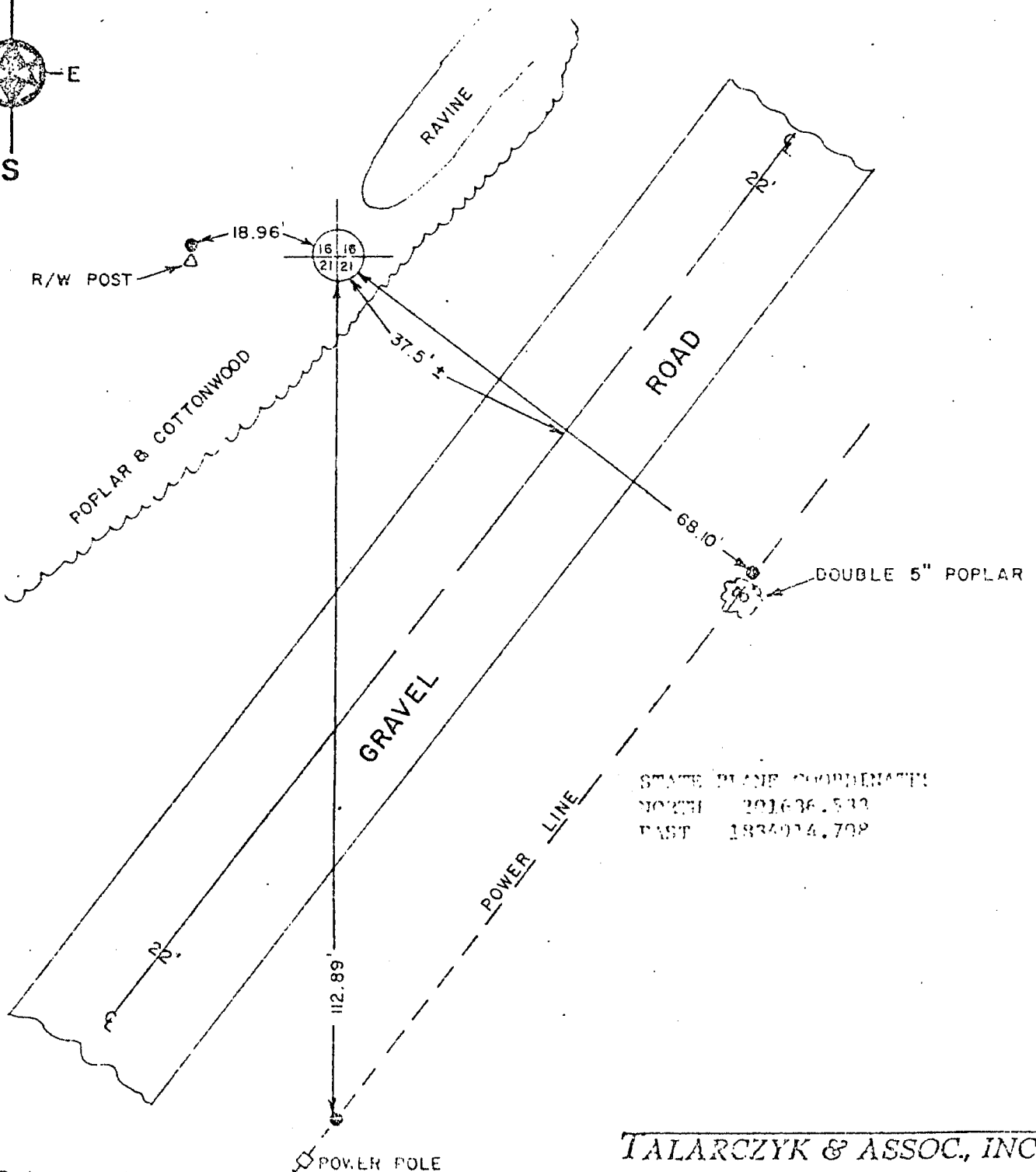
4" x 30" ROUND CAST ALUMINUM MONUMENT (TOP AT GRADE)



3/4" x 24" IRON ROD



CORNER SET FROM TIES TO PREVIOUS SURVEY BY CARL F. BARTELS DATED FEB. 1972.



STATE PLANE COORDINATES  
 NORTH 201636.533  
 EAST 1834914.708

PK D-1 PAGE 47  
 NO. 1-78007  
 CKED [Signature]  
 #N BY [Signature]

SCALE: 1" = 20'

**TALARCZYK & ASSOC., INC.**

110 E. Division Street  
 DODGEVILLE, WI 53533

Phone 608/335 5301