

CERTIFIED LAND CORNER

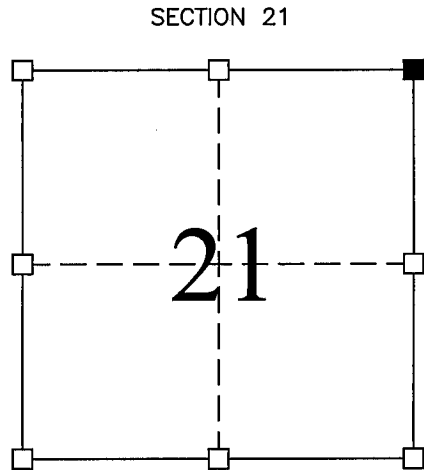
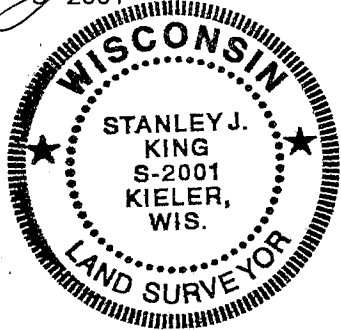
STATE OF WISCONSIN COUNTY OF GRANT

CERTIFICATE

I, Stanley J. King, do hereby certify that the corner location of this record was determined by me and/or under my direct supervision and that this U.S. public land survey monument record is correct and complete to the best of my knowledge and belief.

Dated this 18th day of August, 2005

Stanley J. King
Stanley J. King S-2001



■ = Corner Location
T1N R2W
Town of: JAMESTOWN

Seal:

History of original corner establishment:

Description of corner evidence found:

I found the North 1/4 corner, East 1/4 corner, and Northeast corner set by Bruce Bowden, but all tie to the Northeast corner were ruined. Four new 3/4" ties bars were set. This was verified using GPS methods.

Description of corner and witness monuments, references, and accessories used to perpetuate the original or reestablished location of this corner:

Witnesses to corner location:

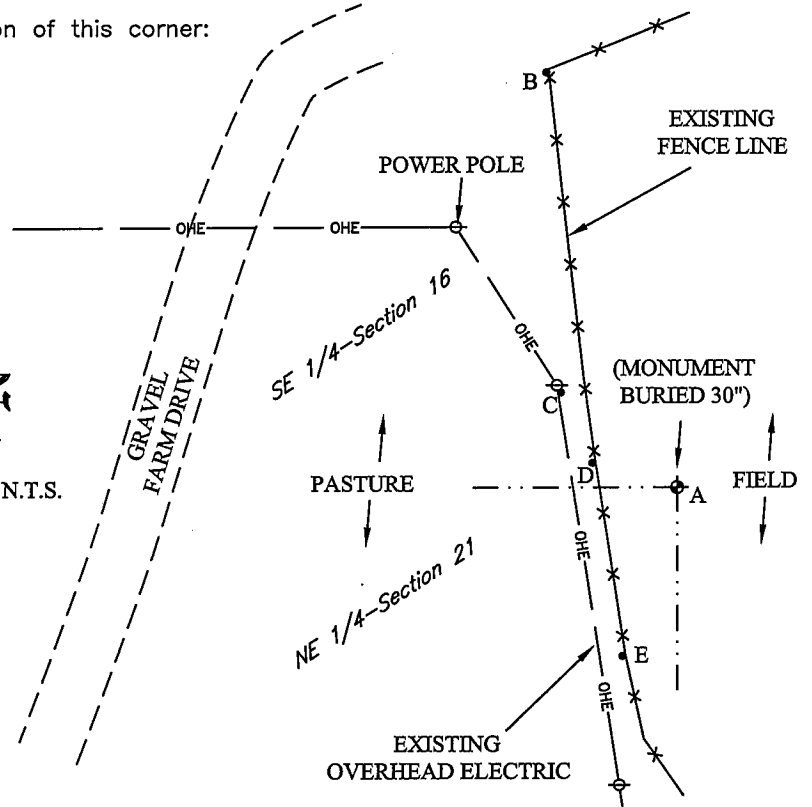
Chad D. Coyier
Jeff J. Brandt
.....
.....

LEGEND

- ⊕ = SECTION CORNER
4" X 30" CAST ALUMINUM
MONUMENT FOUND
- = TIE BAR
3/4" BAR SET

SCALE: N.T.S.

- (A-B) = N 17°25'17" W 225.92'
- (A-C) = N 50°48'24" W 78.07'
- (A-D) = N 73°18'43" W 44.68'
- (A-E) = S 17°13'46" W 91.66'



BLACKHAWK
ENGINEERING, Ltd.

Civil & Municipal Engineers and Building Design
2 INSIGHT DRIVE OFFICE PHONE: (608) 348-4433
PLATTEVILLE, WISCONSIN FAX: (608) 348-4449

SURVEY CREW: CDC,JJB
DRAWN BY: CDC
DATE: AUGUST 18TH, 2005
FILE: F:\ACAD12\2005\05-082\TIESHEET.DWG

SECTION CORNER TIES

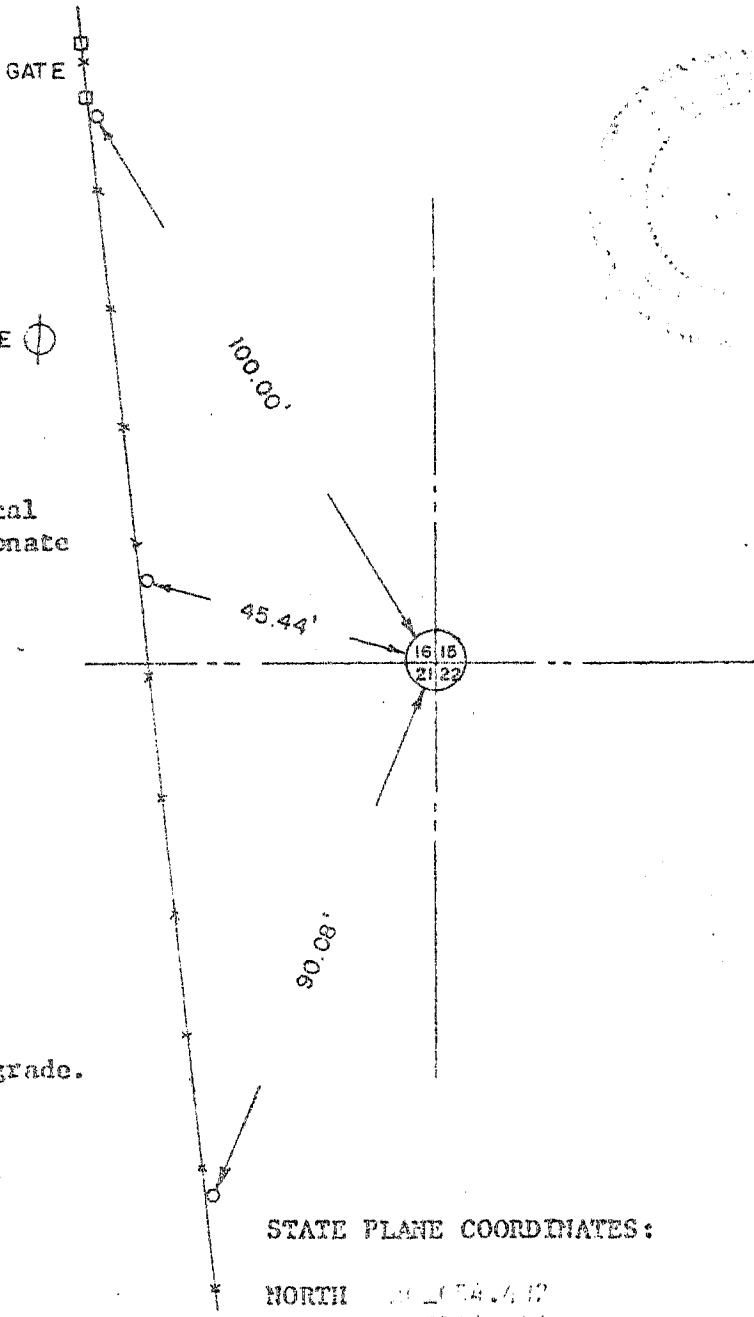
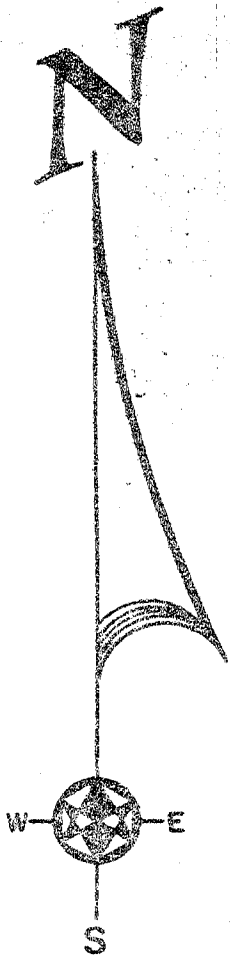
TO THE SOUTHEAST CORNER OF SECTION 16, TOWNSHIP 1 NORTH,
 RANGE 2 WEST, FOURTH PRINCIPAL MERIDIAN, JAMES TOWN
 TOWNSHIP, GRANT COUNTY, WISCONSIN.

James Town

I, Bruce D. Bowden, hereby certify that I have
 complied with the Wisconsin Statutes, the Statutes
 of the United States and the rules and regulations
 of the Secretary of the Interior in the location of
 the corner shown below.



April 24, 1978

Bruce D. Bowden
 Bruce D. Bowden R.L.S.-1250



Corner set by existing physical
 evidence and single proportionate
 measurement.

LEGEND

-  4" x 30" Cast Aluminum Monument 20" below grade.
-  3/4" x 24" Iron Rod

STATE PLANE COORDINATES:

NORTH 10178.417
 EAST 119750.104

BOOK D-1 PAGE 47
 JOB NO. D-78007
 CHECKED RJA
 DRAWN BY RJM

SCALE: 1" = 30'

TALARCZYK & ASSOC., INC.

110 E. Division Street
 DODGEVILLE, WI 53533

Phone 608/935-5301

67