

GRANT COUNTY CERTIFIED LAND CORNER

CORNER NUMBER 66

CERTIFICATE:

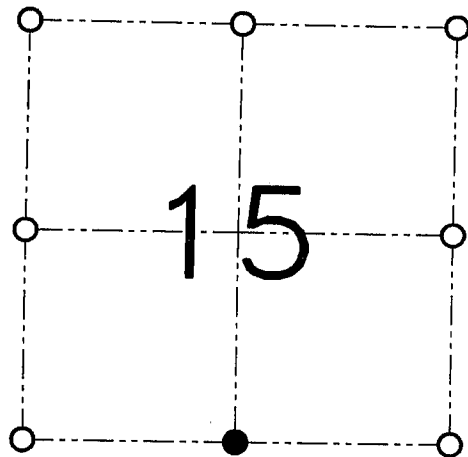
I, Larry L. Austin, do hereby certify that on the 21st day of February, 2001, I found evidence of the South 1/4 corner of Section 15, Town 1 North, Range 2 West, of the 4th Principal Meridian, and I re-established said corner according to the Wisconsin statutes as shown and described hereon.

Dated this 28th day of February, 2001

Larry L. Austin
Larry L. Austin, S-1903



SEAL



● = CORNER LOCATION
SOUTH 1/4 CORNER OF
SECTION 15, T 1 N R 2 W
TOWN OF JAMESTOWN

HISTORY OF ORIGINAL CORNER ESTABLISHMENT:

Corner was originally set in 1832 by Lucius Lyon.
No other record of the corner was found.

DESCRIPTION OF CORNER EVIDENCE FOUND:

I reset the corner at an occupied fence corner. The fence corner was the only evidence to the location of the corner. This location fit well with area occupied and monumented corners. Verified this location using EDM & GPS methods.

DESCRIPTION OF CORNER AND WITNESS MONUMENTS

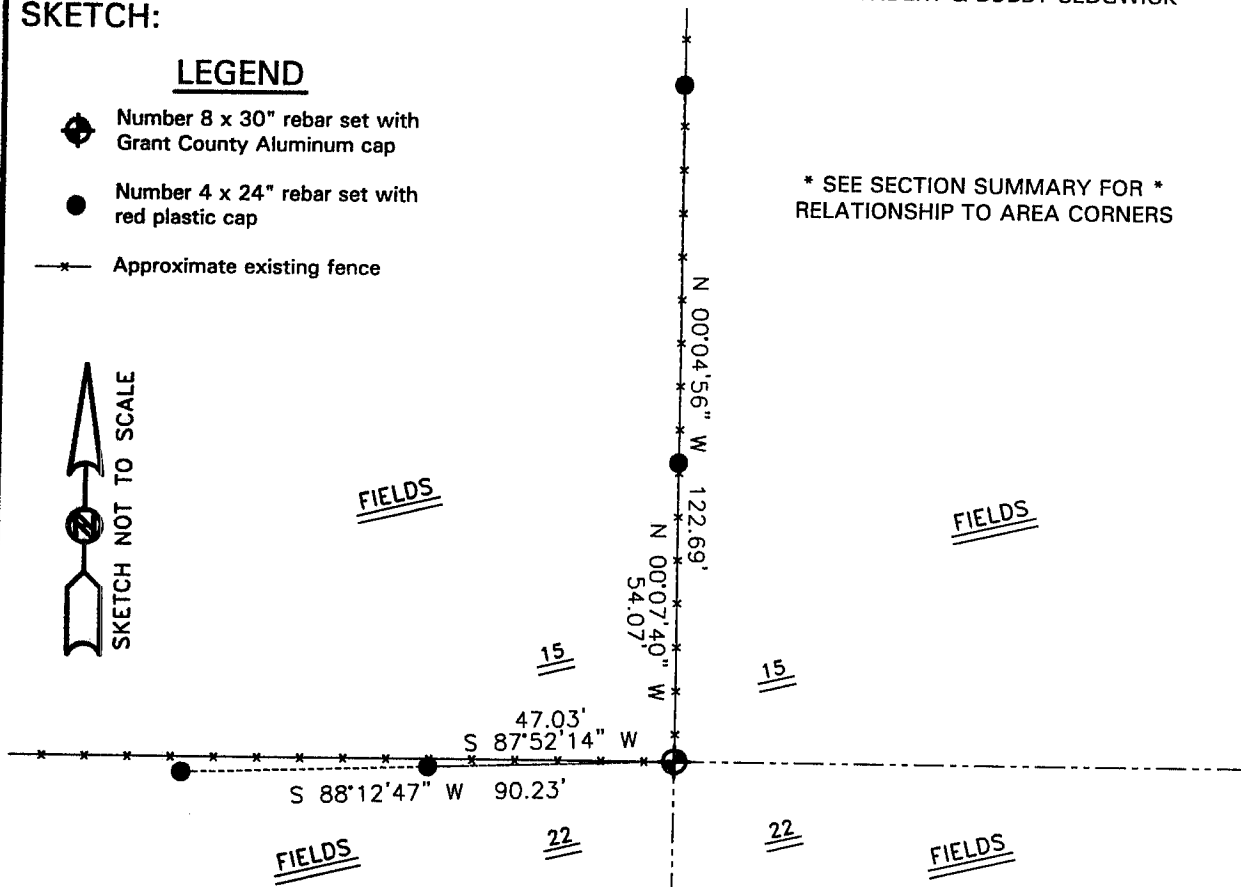
references and accessories used to perpetuate the original or re-established location of this corner.
WITNESS TO THE CORNER LOCATION: SHANE AUSTIN & SHELBY BLINDERT & BOBBY SEDGWICK

SKETCH:

LEGEND

- Number 8 x 30" rebar set with Grant County Aluminum cap
- Number 4 x 24" rebar set with red plastic cap
- *— Approximate existing fence

* SEE SECTION SUMMARY FOR *
RELATIONSHIP TO AREA CORNERS



AUSTIN ENGINEERING, LLC
4211 HWY 81 E, LANCASTER, WI 53813
PHONE 608-723-6363 FAX 608-723-6702

FIELDBOOK: SDR33, 2030
G:\T1NR2W\16
G:\SWA\TIE\T1NR2W\66

DRAWN BY: SW AUSTIN
APPROVED: LL AUSTIN
CREW: BS-SB-SA-TF
SHEET 1 OF 1