

GRANT COUNTY CERTIFIED LAND CORNER

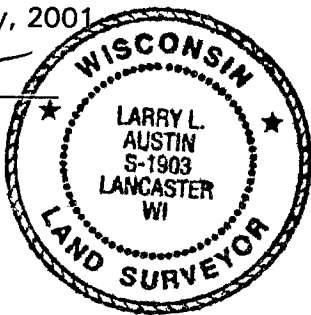
CORNER NUMBER 59

CERTIFICATE:

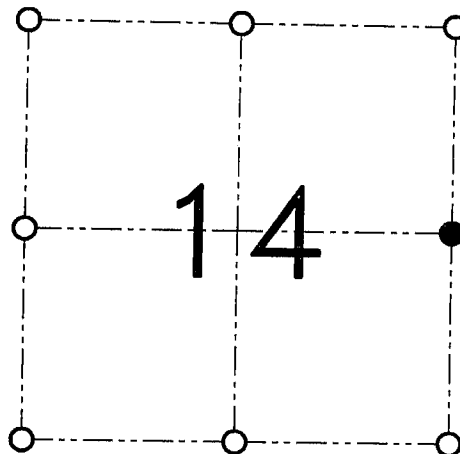
I, Larry L. Austin, do hereby certify that the corner location on this record was determined by me and/or under my direct supervision that this U.S. public land survey monument record is correct and complete to the best of my knowledge and belief.

Dated this 19th day of January, 2001

Larry L. Austin
Larry L. Austin, S-1903



SEAL



● = CORNER LOCATION

SECTION 14, T 1 N R 2 W
TOWN OF JAMESTOWN

HISTORY OF ORIGINAL CORNER ESTABLISHMENT:

Corner was originally set in 1832 by Lucius Lyon.
No other record of the corner was found.

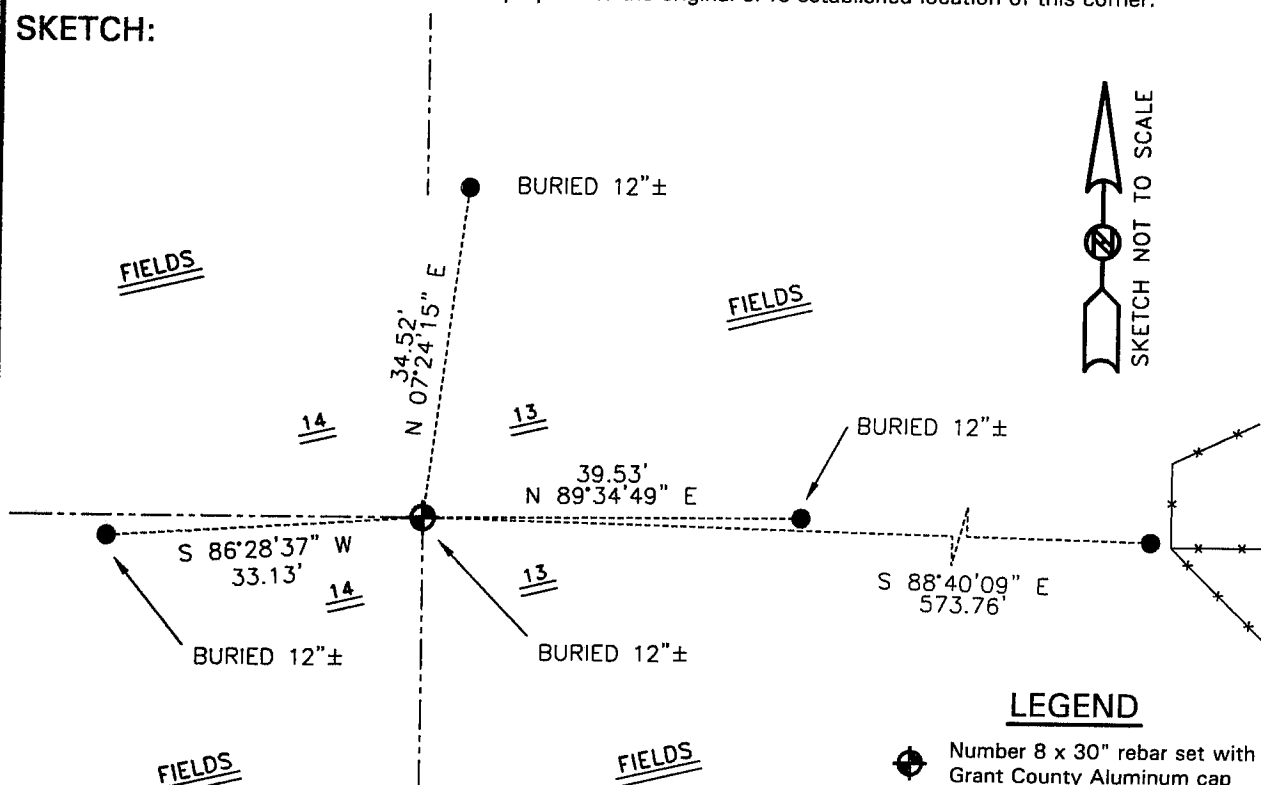
DESCRIPTION OF CORNER EVIDENCE FOUND:

I reset the corner proportionately between the Northeast and Southeast corners of Section 14. Verified this location using EDM & GPS methods.

DESCRIPTION OF CORNER AND WITNESS MONUMENTS

references and accessories used to perpetuate the original or re-established location of this corner.

SKETCH:



LEGEND

- Number 8 x 30" rebar set with Grant County Aluminum cap
- Number 4 x 24" rebar set with red plastic cap
- Approximate existing fence

* SEE SECTION SUMMARY FOR *
RELATIONSHIP TO AREA CORNERS

AUSTIN ENGINEERING, LLC
4211 HWY 81 E, LANCASTER, WI 53813
PHONE 608-723-6363 FAX 608-723-6702

FIELDBOOK: SDR33, 2030
G:\T1NR2W\16
G:\SWA\TIE\T1NR2W\59

DRAWN BY: SW AUSTIN
APPROVED: LL AUSTIN
CREW: BS-SB-SA-TF
SHEET 1 OF 1