

U.S. PUBLIC LAND SURVEY MONUMENT RECORD - GRANT COUNTY, WI

Section 14, Town 1 North Range 2 West, Town of Jamestown

CERTIFICATE:

I, Aaron J. Austin, Wisconsin Professional Land Surveyor, do hereby certify that the corner location on this record was determined by me and/or under my direct supervision and that this U.S. Public Land Survey Monument Record is correct and complete to the best of my knowledge and belief.

Dated this 21st day of January, 2016.

Aaron J. Austin
 Aaron J. Austin, S-2922



● = CORNER LOCATION

HISTORY OF CORNER ESTABLISHMENT:

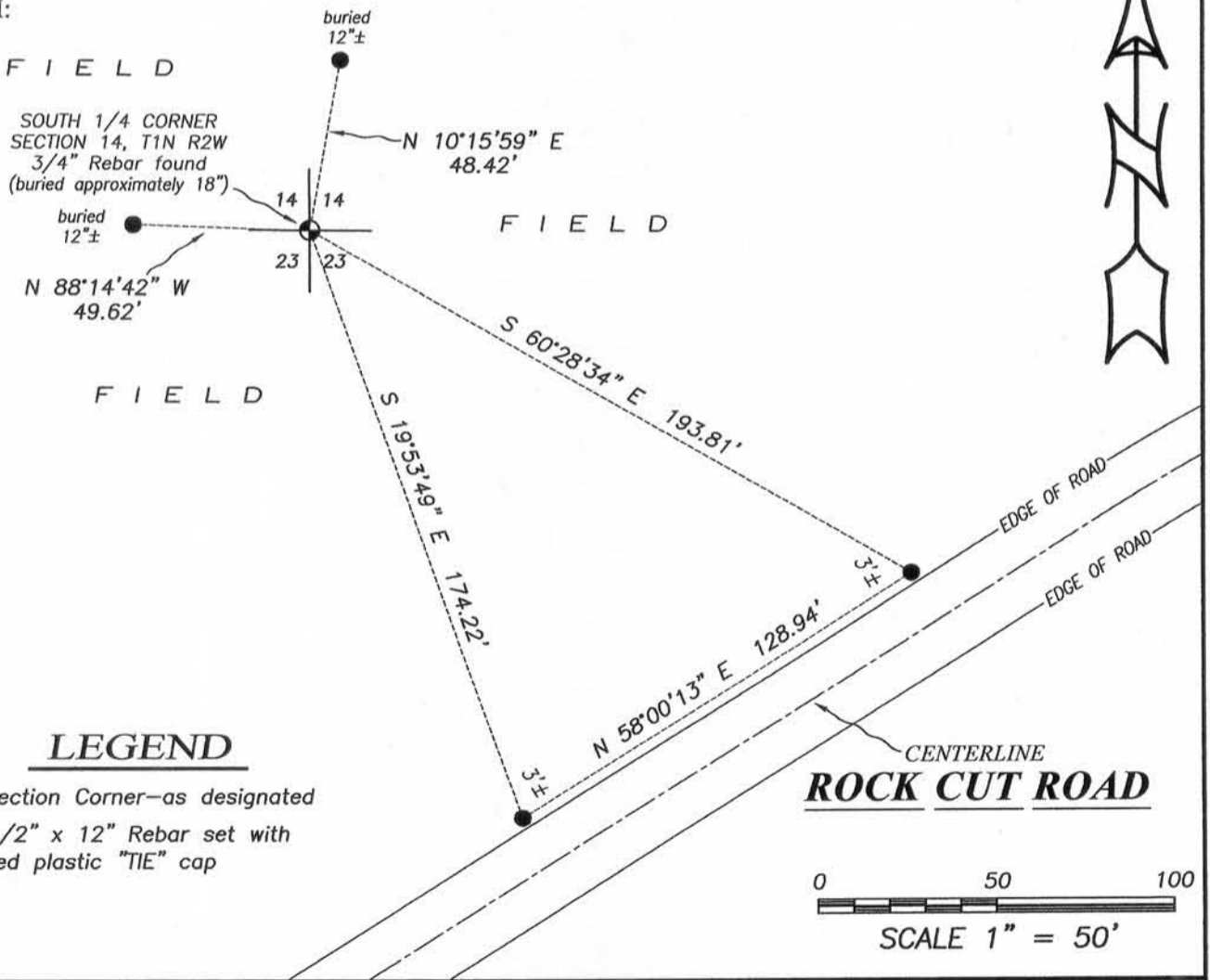
1832 - Lucius Lyon set original corner.
 1842-Wiltse tied to the corner on Surveys filed in Book A, Pages 146-147.
 1997-Larry Austin reset the corner on a Survey filed in Book 1, Page 47 and prepared a Survey Monument Record.
 Several more recent surveys have accepted this corners location.

DESCRIPTION OF CORNER EVIDENCE FOUND:

I found a 3/4" rebar buried in place. I set 4 new witness corners after I verified it location with E.D.M. and G.P.S. methods.

DESCRIPTION OF CORNER AND WITNESS MONUMENTS, references and accessories used to perpetuate the original or re-established location of this corner. Witnesses to corner location Shane Austin.

SKETCH:



LEGEND

- ⊙ Section Corner—as designated
- 1/2" x 12" Rebar set with red plastic "TIE" cap

0 50 100
 SCALE 1" = 50'

Austin Engineering LLC
 austinengineeringllc.com
 4211 HWY 81 E, LANCASTER, WI 53813
 PHONE: 608-723-6363 FAX: 608-723-6702

JOB NO: 15s202
 H:\CRD\15S202
 H:\TIE\T1NR2W\64

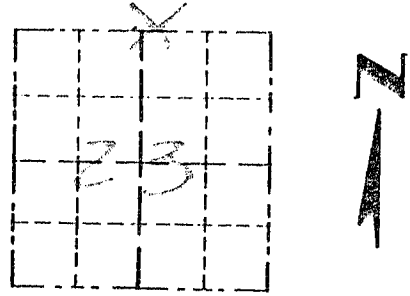
FIELDBOOK: TDSR
 DRAWN BY: AJ AUSTIN
 CREW: SW AUSTIN

Survey Monument Record

TYPE OF MONUMENT 3/4" X 24" IRON BAR SET

CORNER NO. 64
 SECTION 23
 TOWN 1N
 RANGE 26W

FIELD BOOK: 96-20
 PAGE (17)



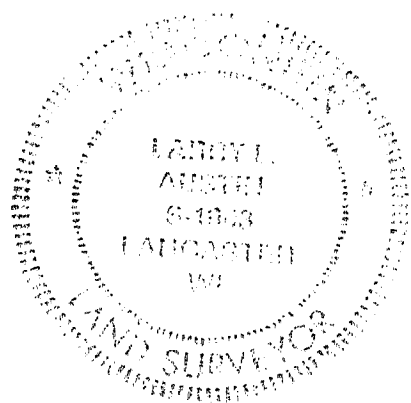
LOCATION
 (Indicated by "X")

BASIS FOR MONUMENT LOCATION

(Use reverse side if necessary)
 Show info such as: History of corner, with reference to Vol. and pg., dates, surveyor; exact description of monument replaced; if location computed, by taped or EDM traverse; landowner, remarks, etc.

SEAL:

CORNER SET IN 1832 BY LUCIUS LYON. NO RECORD OF CORNER FOUND SINCE ORIGINAL SURVEYS; I SET THE CORNER BY DOUBLING A MONUMENTED 40 CORNER OVER FROM THE WEST. VERIFIED THIS LOCATION USING EDM METHODS



CERTIFIED CORRECT
Kerry J. Rust
 Registered Land Surveyor
 DATE: 12/24/97

TIE SKETCH

Show at least three (3) ties and monument

LEGEND

- ⊙ 3/4" X 24" IRON BAR SET 18" BELOW SURFACE
- 1/2" X 15" IRON BAR SET N85°16'00"E - 322.53'
- ⚡ POWER POLE

