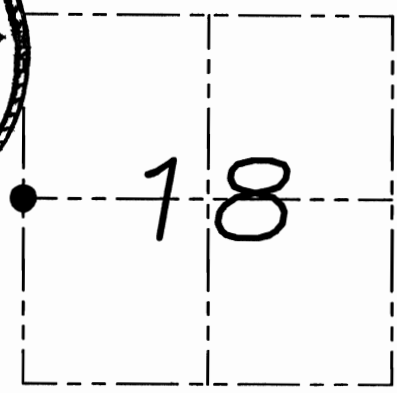


U.S. PUBLIC LAND SURVEY MONUMENT RECORD

Section 18, Town 1 North Range 1 West, Town of Hazel Green, Grant County, Wisconsin

CERTIFICATE

I, Larry L. Austin, do hereby certify that the corner location on this record was determined by me and/or under my direct supervision and that this U.S. public land survey monument record is correct and complete to the best of my knowledge and belief.



● = CORNER LOCATION

Larry L. Austin 6.8.09
 Larry L. Austin, S-1903 date

HISTORY OF CORNER

Corner was originally set in the 2nd quarter of 1832 by Lyon. In 1858 Hayden tied to the corner. In 1879 Barber found a stone and moved it to the corner location. No other recent record of the corner was found.

CORNER EVIDENCE FOUND

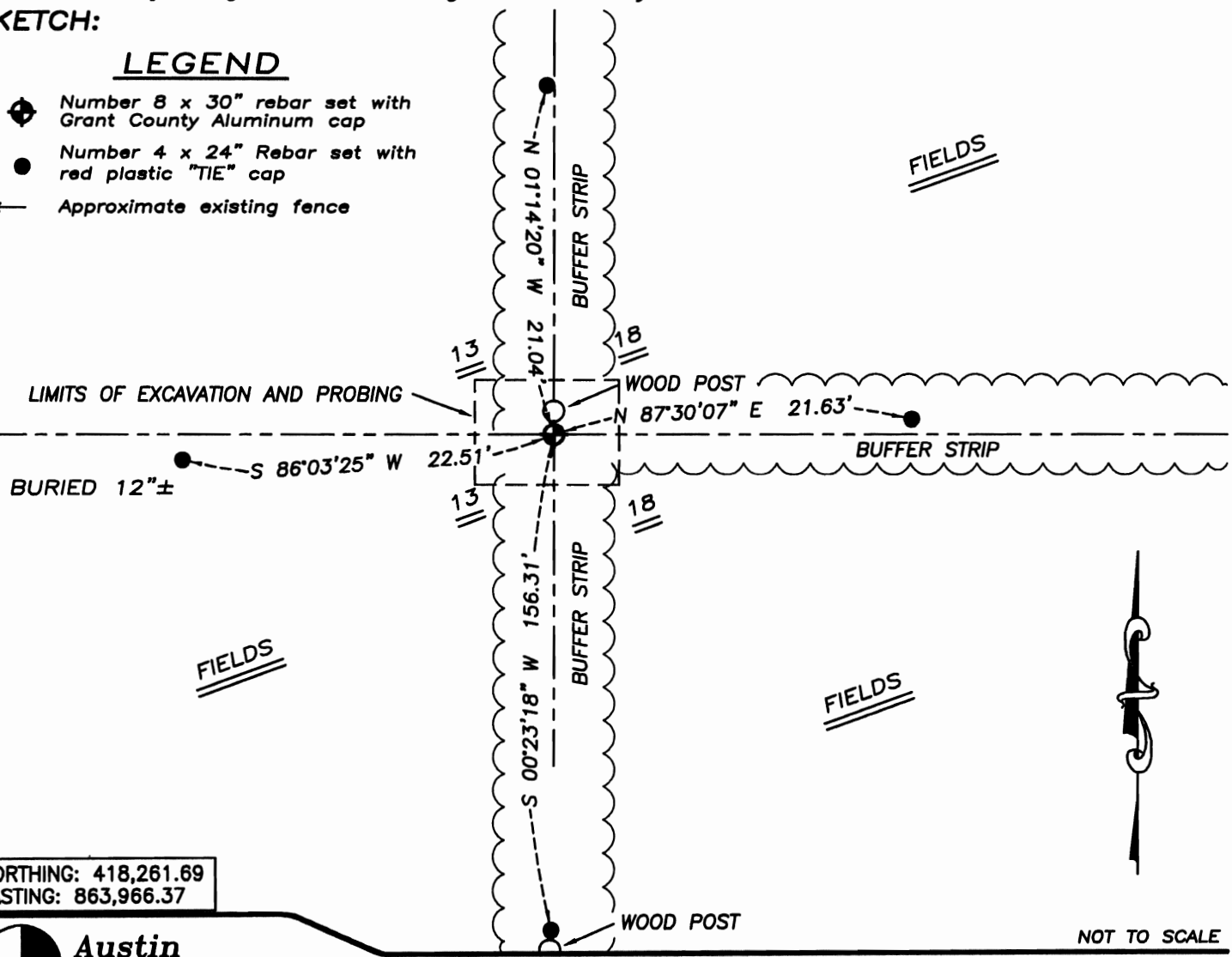
I was unable to locate the stone after digging with a shovel and probing the area. I reset the corner at the occupied location. Verified using EDM & GPS methods.

DESCRIPTION OF CORNER AND WITNESS MONUMENTS, references and accessories used to perpetuate the original or re-established location of this corner. Witnesses to monument location Bobby Sedgwick & Brad Digman & Shelby Blindert

SKETCH:

LEGEND

- Number 8 x 30" rebar set with Grant County Aluminum cap
- Number 4 x 24" Rebar set with red plastic "TIE" cap
- x- Approximate existing fence



NORTHING: 418,261.69
 EASTING: 863,966.37

Austin Engineering LLC

4211 HWY 81 E, LANCASTER, WI 53813
 PHONE 608-723-6363 FAX 608-723-6702

JOB NUMBER 08S002
 FIELDBOOK: TDSR, 2910
 G:\T1NR1W\T1NR1W
 H:\TIE\T1NR1W\54

DRAWN BY: SW AUSTIN
 APPROVED: LL AUSTIN

NOT TO SCALE