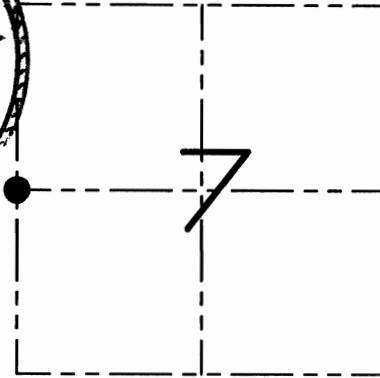


# U.S. PUBLIC LAND SURVEY MONUMENT RECORD

Section 7, Town 1 North Range 1 West, Town of Hazel Green, Grant County, Wisconsin

## CERTIFICATE

I, Larry L. Austin, do hereby certify that the corner location on this record was determined by me and/or under my direct supervision and that this U.S. public land survey monument record is correct and complete to the best of my knowledge and belief.



● = CORNER LOCATION

*Larry L. Austin*  
 Larry L. Austin, S-1903 date

## HISTORY OF CORNER

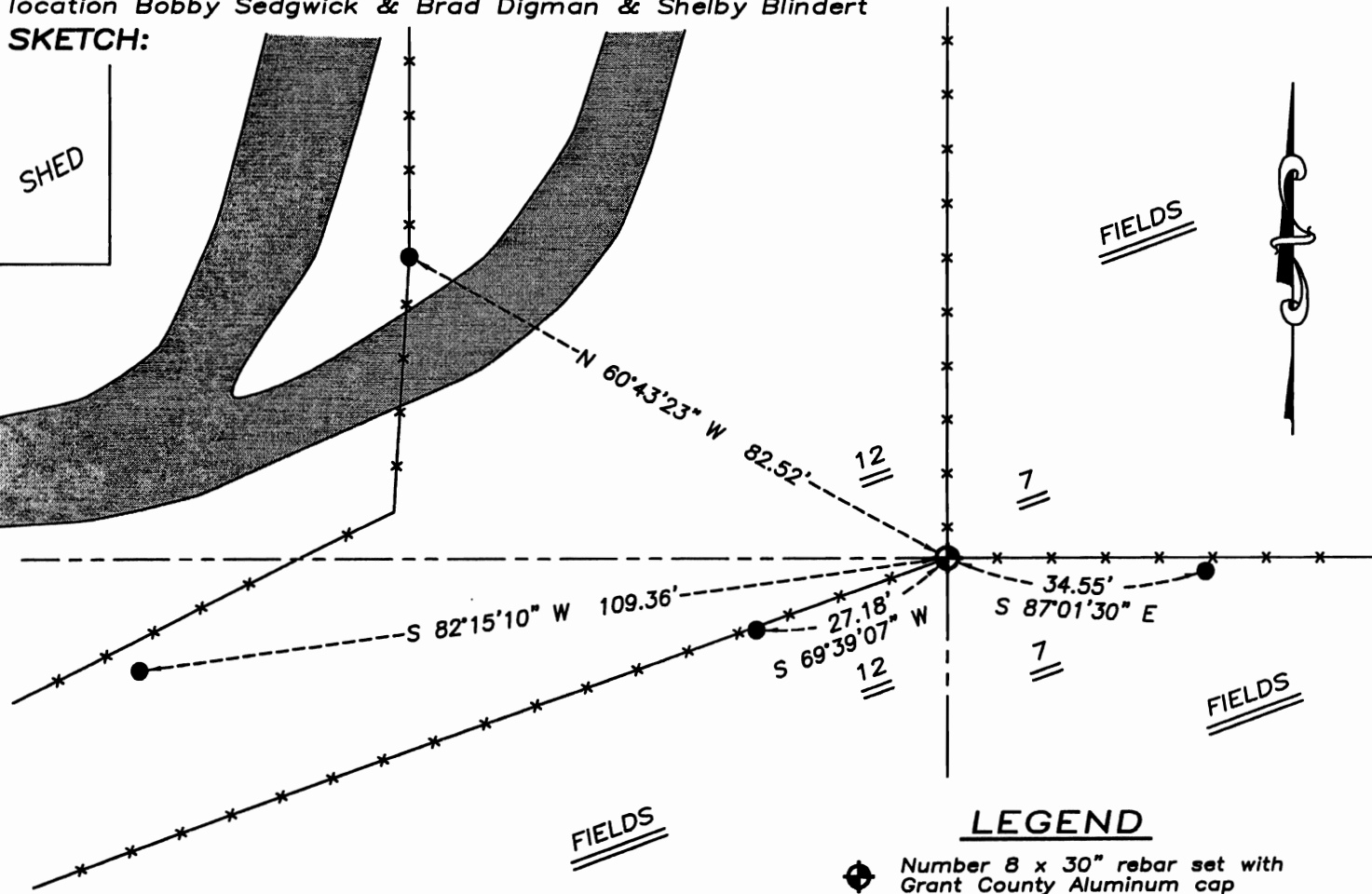
Corner was originally set in the 2nd quarter of 1832 by Lyon. In 1847 Stuntz tied to the corner. In 1854 Clark tied to the corner. No other record of the corner was found.

## CORNER EVIDENCE FOUND

I found and accepted an occupied location after an EDM & GPS traverse of the area.

**DESCRIPTION OF CORNER AND WITNESS MONUMENTS**, references and accessories used to perpetuate the original or re-established location of this corner. Witnesses to monument location Bobby Sedgwick & Brad Digman & Shelby Blindert

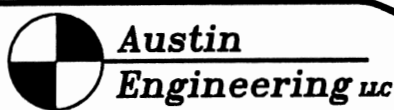
## SKETCH:



## LEGEND

- ◆ Number 8 x 30" rebar set with Grant County Aluminum cap
- Number 4 x 24" Rebar set with red plastic "TIE" cap
- \*— Approximate existing fence

NORTHING: 423,577.61  
 EASTING: 864,002.03



4211 HWY 81 E, LANCASTER, WI 53813  
 PHONE 608-723-8363 FAX 608-723-6702

JOB NUMBER 08S002  
 FIELDBOOK: TDSR, 2910  
 G:\T1NR1W\T1NR1W  
 H:\TIE\T1NR1W\34

DRAWN BY: SW AUSTIN  
 APPROVED: LL AUSTIN

NOT TO SCALE