

U.S. PUBLIC LAND SURVEY MONUMENT RECORD

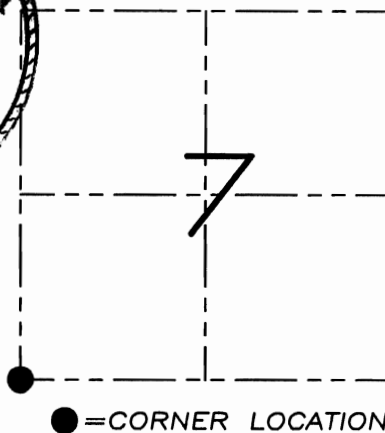
Section 7, Town 1 North Range 1 West, Town of Hazel Green, Grant County, Wisconsin

CERTIFICATE

I, Larry L. Austin, do hereby certify that the corner location on this record was determined by me and/or under my direct supervision and that this U.S. public land survey monument record is correct and complete to the best of my knowledge and belief.



Larry L. Austin
 Larry L. Austin, S-1903 6.8.09
 date



HISTORY OF CORNER

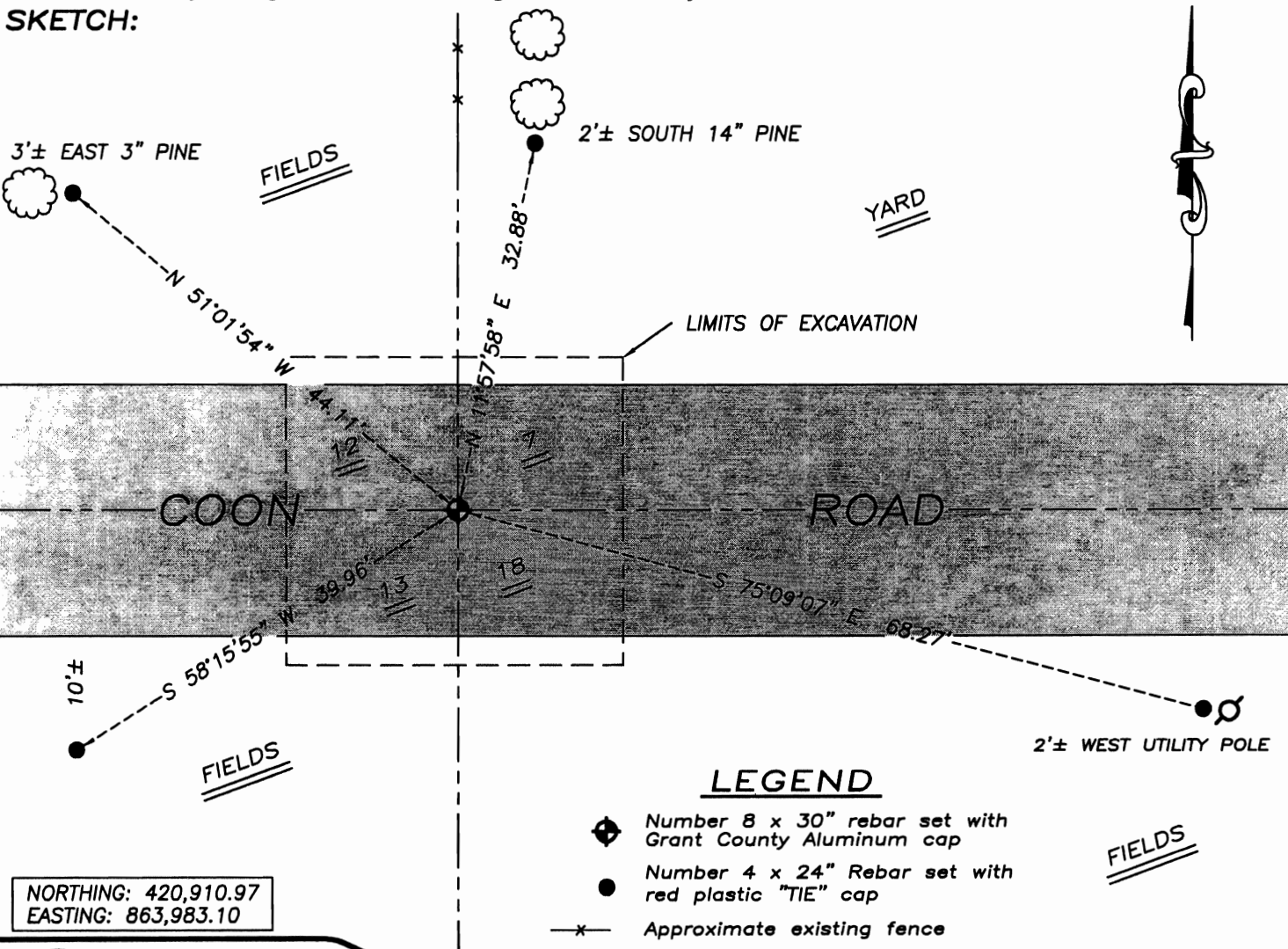
Corner was originally set in 2nd quarter of 1832 by Lyon. In 1858 Hayden tied to the corner. In 1879 Barber found an ancient corner stone. No other record of the corner was found.

CORNER EVIDENCE FOUND

After a backhoe excavation of the site, no evidence of the stone was found. I set the corner at the occupied location after verifying with EDM & GPS methods.

DESCRIPTION OF CORNER AND WITNESS MONUMENTS, references and accessories used to perpetuate the original or re-established location of this corner. Witnesses to monument location Bobby Sedgwick & Brad Digman & Shelby Blindert

SKETCH:



NORTHING: 420,910.97
 EASTING: 863,983.10

LEGEND

- ◆ Number 8 x 30" rebar set with Grant County Aluminum cap
- Number 4 x 24" Rebar set with red plastic "TIE" cap
- x- Approximate existing fence

NOT TO SCALE

Austin Engineering LLC

4211 HWY 81 E, LANCASTER, WI 53813
 PHONE 608-723-6363 FAX 608-723-6702

JOB NUMBER 08S002
 FIELDBOOK: TDSR, 2910
 G:\T1NR1W\T1NR1W
 H:\TIE\T1NR1W\53

DRAWN BY: SW AUSTIN
 APPROVED: LL AUSTIN