

GRANT COUNTY CERTIFIED LAND CORNER

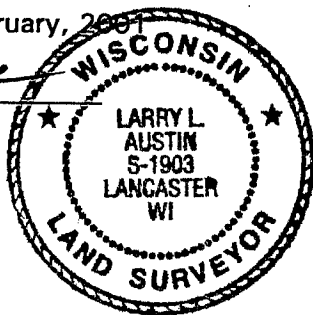
CORNER NUMBER 46

CERTIFICATE:

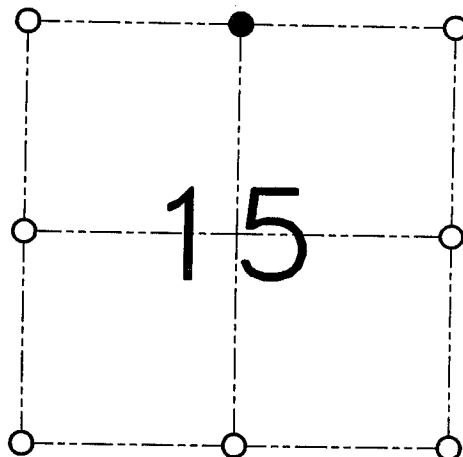
I, Larry L. Austin, do hereby certify that on the 15th day of February, 2001, I found evidence of the North 1/4 corner of Section 15, Town 1 North, Range 2 West, of the 4th Principal Meridian, and I re-established said corner according to the Wisconsin statutes as shown and described hereon.

Dated this 28th day of February, 2001

Larry L. Austin
Larry L. Austin, S-1903



SEAL



● = CORNER LOCATION

NORTH 1/4 CORNER OF SECTION 15, T 1 N R 2 W TOWN OF JAMESTOWN

HISTORY OF ORIGINAL CORNER ESTABLISHMENT:

Corner was originally set in 1832 by Lucius Lyon. In 1880 Joel Barber tied to the corner. No other record of the corner was found.

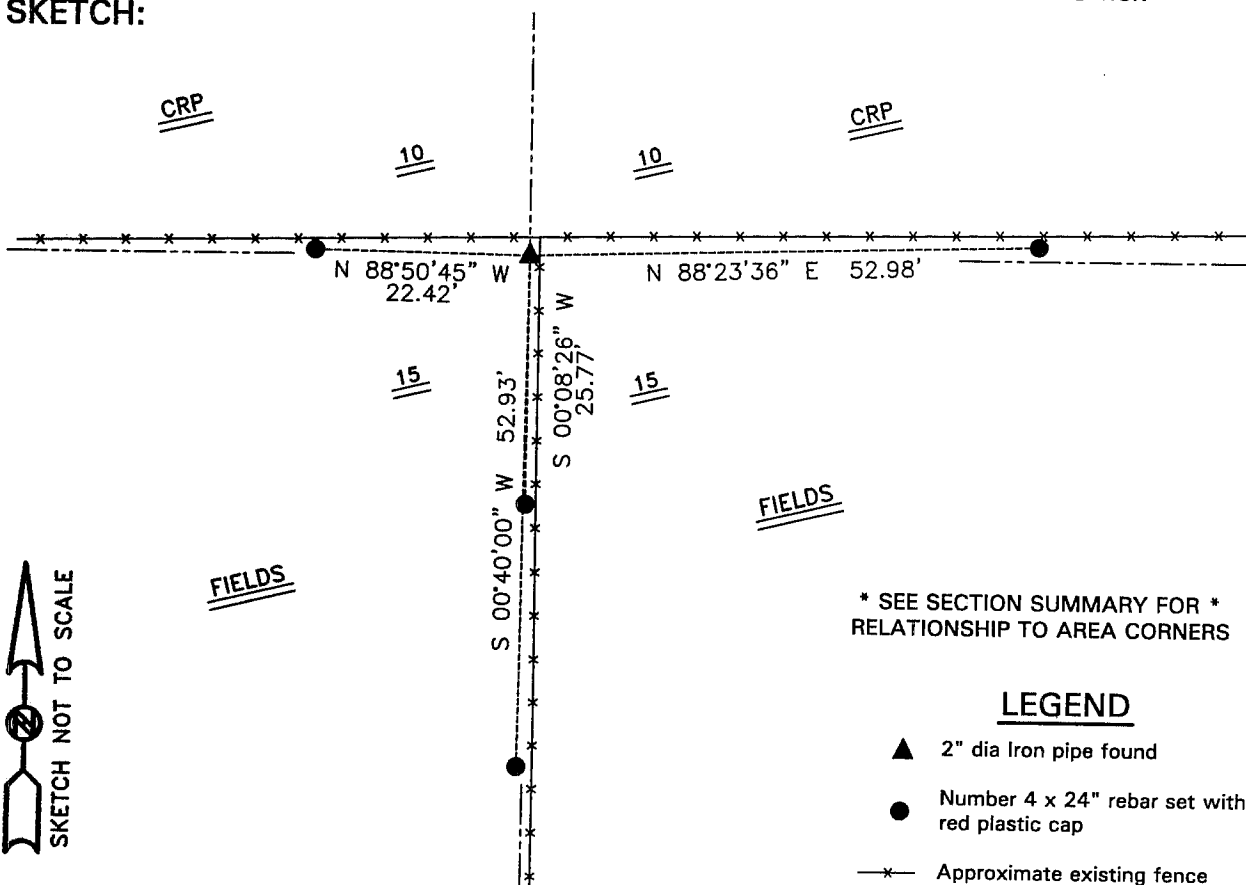
DESCRIPTION OF CORNER EVIDENCE FOUND:

I found an existing 2" Iron pipe at this location. I accepted it's location after an EDM & GPS traverse of the area.

DESCRIPTION OF CORNER AND WITNESS MONUMENTS

references and accessories used to perpetuate the original or re-established location of this corner.
WITNESS TO THE CORNER LOCATION: TIM FAUVER & SHELBY BLINDERT & BOBBY SEDGWICK

SKETCH:



AUSTIN ENGINEERING, LLC
4211 HWY 81 E, LANCASTER, WI 53813
PHONE 608-723-6363 FAX 608-723-6702

FIELDBOOK: SDR33, 2030
G:\T1NR2W\16
G:\SWA\TIE\T1NR2W\46

DRAWN BY: SW AUSTIN
APPROVED: LL AUSTIN
CREW: BS-SB-SA-TF
SHEET 1 OF 1