

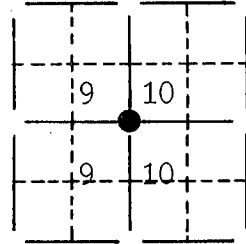
# U. S. PUBLIC LAND SURVEY MONUMENT RECORD

## FOR Grant COUNTY, WISCONSIN

Note: This form is intended and designed to fulfill all requirements of Wisconsin Administrative Code, Chapter A-E7.08, U.S. Public Land Survey Monument Record (3) (a) (b) (c) (d) (e) (f) (g) (h) (i). Use additional sheet if necessary.

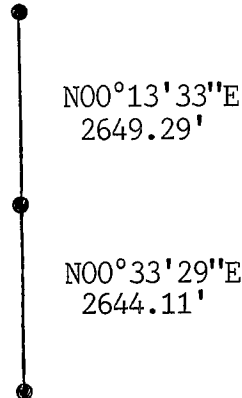
(a) The  section,  one quarter corner common to sections 9, 10,  
Township(s) 01 N, Range(s) 02 W

State plane coordinates: N 209,600.95  
E 1,837,597.42

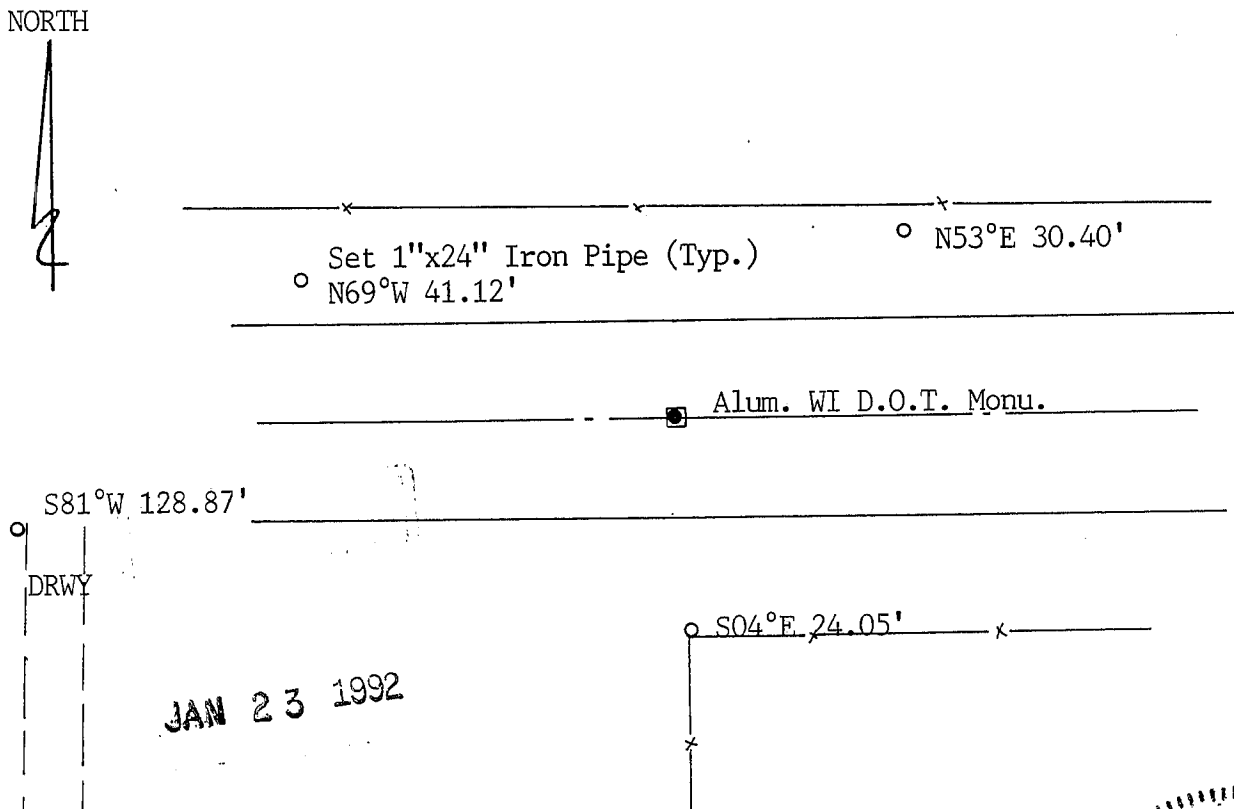


(b) (f) (g) (h) Description of monument found at this corner and if it was accepted, state all evidence (material, testimonial, occupational, plats, records, other monuments) used as a basis for accepting. If not accepted or nothing was found, state evidence used as basis for establishing location and what was set. If reestablished through lost corner proportionate methods, indicate all monuments, distances and directions used.

Found no evidence of an existing monument at the prorated location or at occupation. Held occupation for corner location; centerline of East-Weast road and extension of fence line to the south. Set WI D.O.T. Alum. Monument.



(c) (d) (e) Plan view of corner with ties to at least 4 witness monuments. If in disagreement with previously established corner, show the distances between the two corners and also indicate ties to disputed corner.



(i) I certify that the corner location on this record was determined by me or under my direction and control and that this U.S. Public Land Survey Monument Record is correct and complete to the best of my knowledge and belief.

[Signature] Date Oct 30, 1991



Filed for record in Grant County Surveyor's Office on \_\_\_\_\_

INDEX #

37