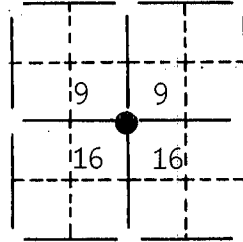


U. S. PUBLIC LAND SURVEY MONUMENT RECORD

FOR Grant COUNTY, WISCONSIN

Note: This form is intended and designed to fulfill all requirements of Wisconsin Administrative Code, Chapter A-E7.08, U.S. Public Land Survey Monument Record (3) (a) (b) (c) (d) (e) (f) (g) (h) (i). Use additional sheet if necessary.

(a) The section, one quarter corner common to sections 9, 16,
 Township(s) 01 N, Range(s) 01 **OR** W **?**



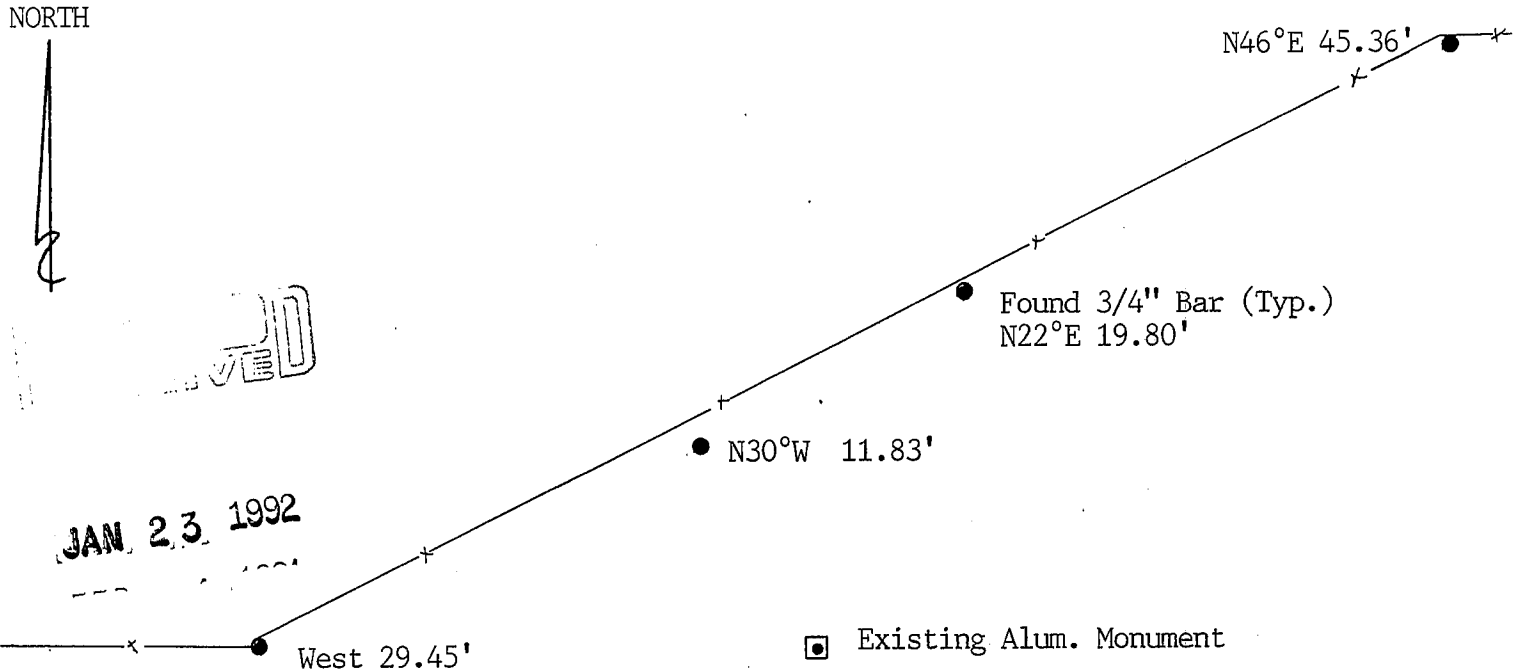
State plane coordinates: N 206,903.7185
 E 1,834,932.9159

(b) (f) (g) (h) Description of monument found at this corner and if it was accepted, state all evidence (material, testimonial, occupational, plats, records, other monuments) used as a basis for accepting. If not accepted or nothing was found, state evidence used as basis for establishing location and what was set. If reestablished through lost corner proportionate methods, indicate all monuments, distances and directions used.

Found and accepted an existing Alum. Monument at the S1/4 Corner of Sec. 9.



(c) (d) (e) Plan view of corner with ties to at least 4 witness monuments. If in disagreement with previously established corner, show the distances between the two corners and also indicate ties to disputed corner.



(i) I certify that the corner location on this record was determined by me or under my direction and control and that this U.S. Public Land Survey Monument Record is correct and complete to the best of my knowledge and belief.

[Signature] OCT 30, 1991
 Signature Date



Filed for record in Grant County Surveyor's Office on _____

INDEX # _____

48

SECTION CORNER TIES

TO THE NORTH ONE-CORNER TIE OF SECTION 16, TOWN ONE NORTH, RANGE TWO WEST, OF THE FOURTH PRINCIPAL MERIDIAN, GRANT CO., WISCONSIN.

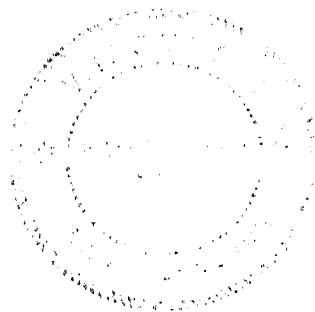
James Bowden

I, Bruce D. Bowden, hereby certify that I have complied with the Wisconsin Statutes, the Statutes of the United States, and the rules and regulations made by the Secretary of the Interior in the location of the corner shown below.

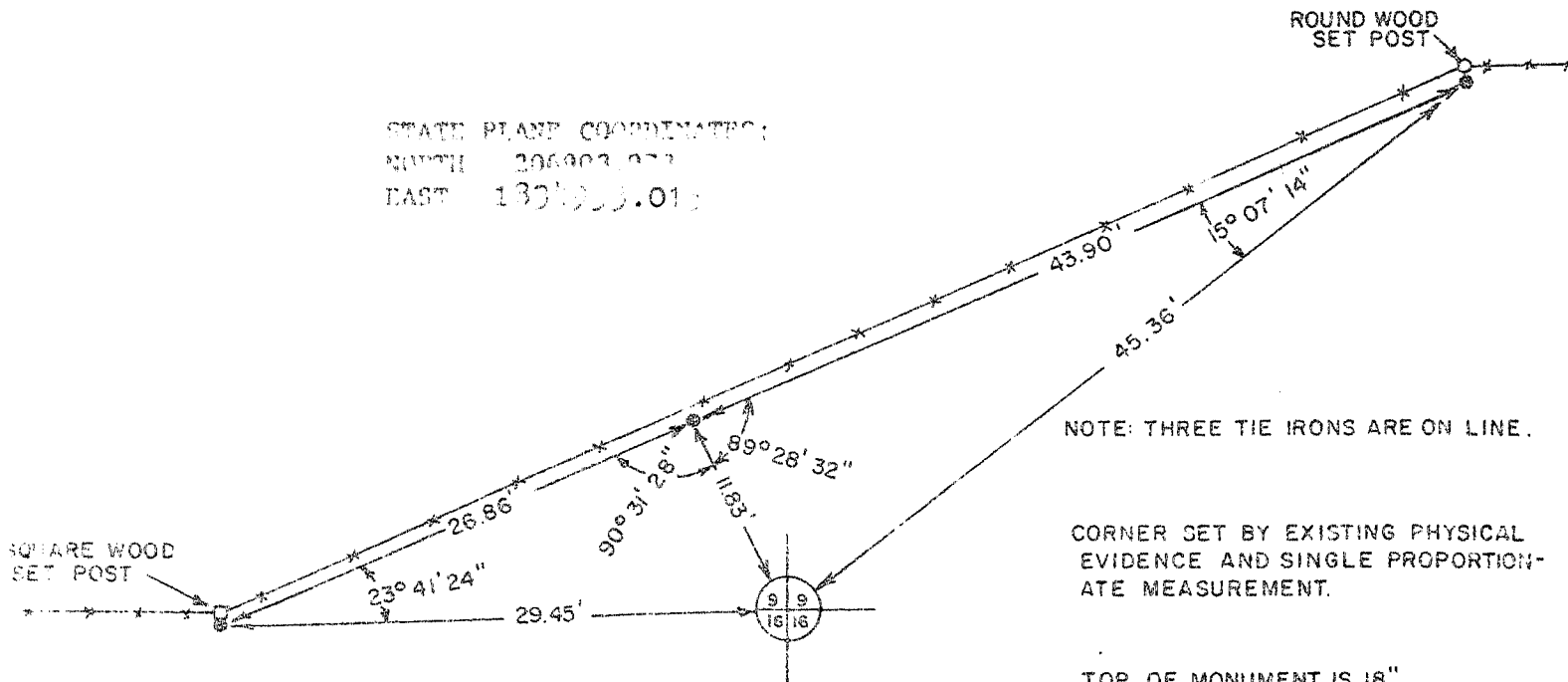


June 21, 1973

Bruce D. Bowden



STATE PLANE COORDINATES:
NORTH 306003.073
EAST 187955.015



LEGEND

4" x 30" ROUND CAST ALUMINUM MONUMENT.

3/4" x 24" IRON ROD

BOOK D-1 PAGE 47
JOB NO. D-78007
CHECKED RSM
DRAWN BY RSM

SCALE: 1" = 10'

TALARCZYK & ASSOC., INC.

110 E. Division Street
DODGEVILLE, WI 53533

Phone 608/935-5301

