

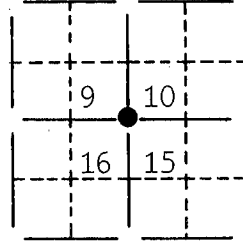
U. S. PUBLIC LAND SURVEY MONUMENT RECORD

FOR Grant COUNTY, WISCONSIN

Note: This form is intended and designed to fulfill all requirements of Wisconsin Administrative Code, Chapter A-E7.08, U.S. Public Land Survey Monument Record (3) (a) (b) (c) (d) (e) (f) (g) (h) (i). Use additional sheet if necessary.

(a) The section, one quarter corner common to sections 9, 10, 15, 16,
 Township(s) 01 N, Range(s) 02 W

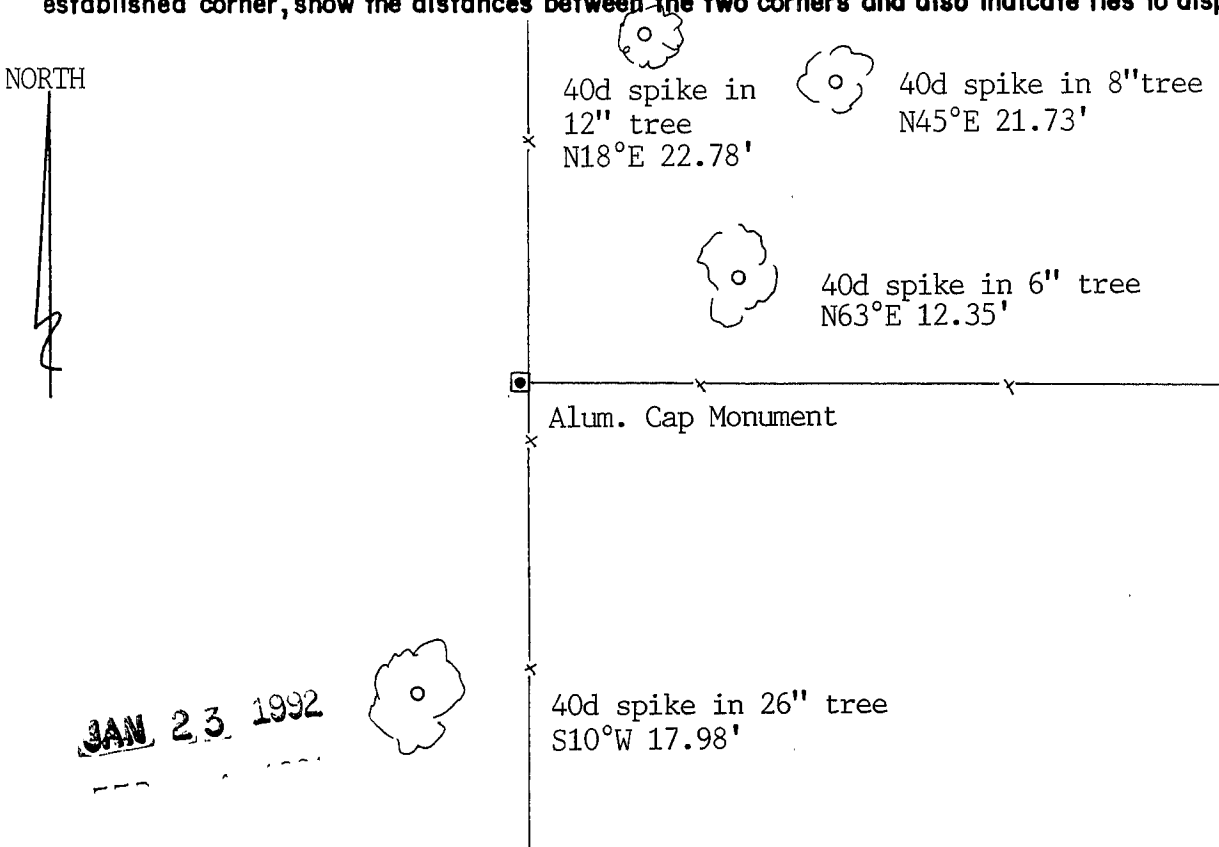
State plane coordinates: N 206,956.9580
 E 1,837,571.6660



(b) (f) (g) (h) Description of monument found at this corner and if it was accepted, state all evidence (material, testimonial, occupational, plats, records, other monuments) used as a basis for accepting. If not accepted or nothing was found, state evidence used as basis for establishing location and what was set. If reestablished through lost corner proportionate methods, indicate all monuments, distances and directions used.

Found Alum. Cap Monument at the SE Corner of Sec. 9. Monument is 1.16' west of a three way fence line.

(c) (d) (e) Plan view of corner with ties to at least 4 witness monuments. If in disagreement with previously established corner, show the distances between the two corners and also indicate ties to disputed corner.



(i) I certify that the corner location on this record was determined by me or under my direction and control and that this U.S. Public Land Survey Monument Record is correct and complete to the best of my knowledge and belief.

[Signature] _____
 Signature Date OCT 30, 1991

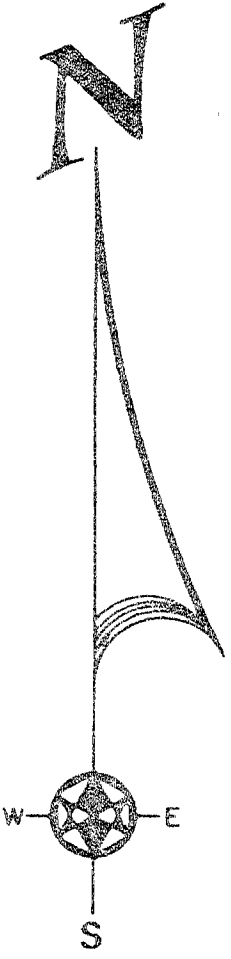


Filed for record in Grant County Surveyor's Office on _____

INDEX #

47

SECTION CORNER TIES



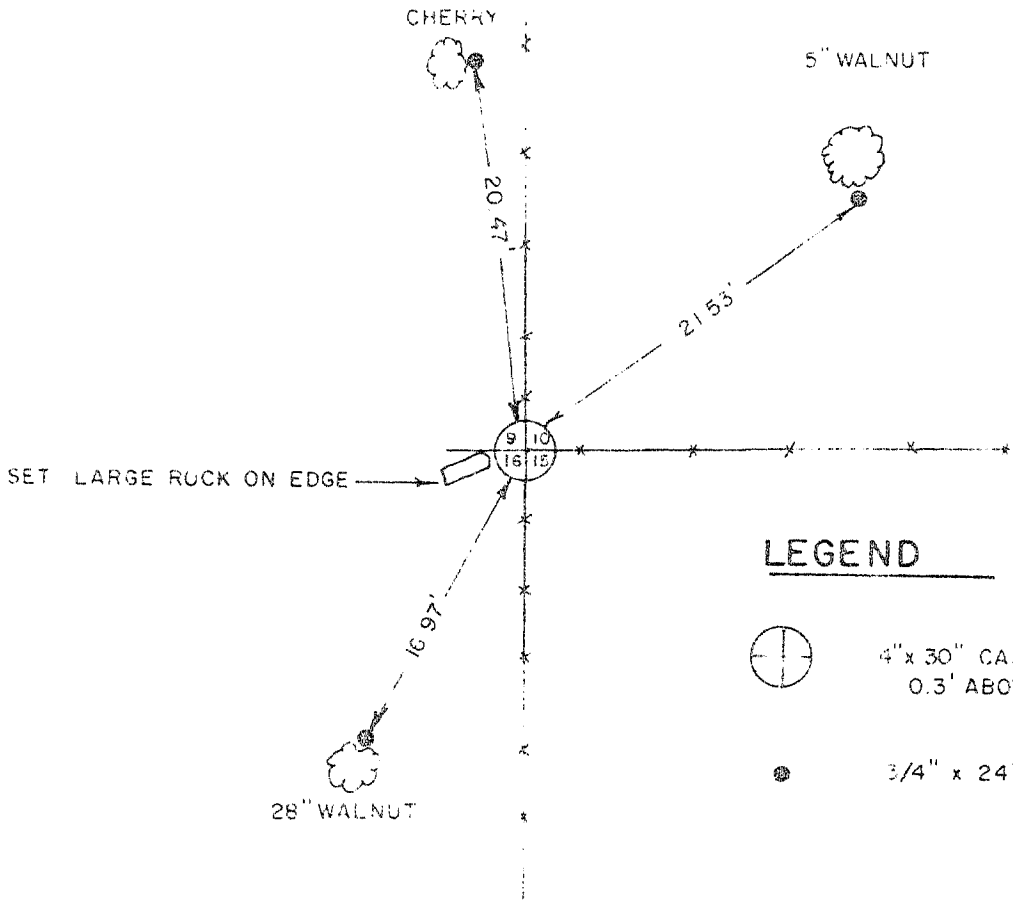
RANGE 2 WEST, FOURTH PRINCIPLE MERIDIAN, JAMESTOWN
TOWNSHIP, GRANT COUNTY, WISCONSIN.



I, Bruce D. Bowden, hereby certify that I have
complied with the Wisconsin Statutes, the statutes
of the United States and the rules and regulations
of the Secretary of the Interior in the location
of the corner shown below.

April 24, 1978

Bruce D. Bowden
Bruce D. Bowden R.L.S. - 1250

Corner set by existing physical evidence
and checked with proportionate measurement.



- LEGEND**
-  4" x 30" CAST ALUMINUM MONUMENT
0.3' ABOVE GRADE.
 -  3/4" x 24" IRON ROD

STATE PLANE COORDINATES: NORTH 206957.276
EAST 1837571.734

BOOK D-1 PAGE 47
JOB NO. P-7800T
CHECKED *ESM*
DRAWN BY *RJM*

SCALE: 1" = 10'

TALARCZYK & ASSOC., INC.
110 E. Division Street
DODGEVILLE, WI 53533
Phone 608/935-5301

471