

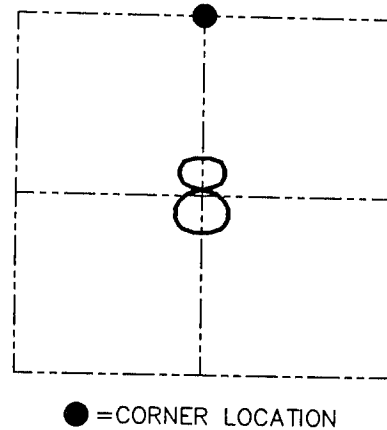
U.S. PUBLIC LAND SURVEY MONUMENT RECORD – GRANT COUNTY, WI  
 Section 8, Town 1 North Range 2 West, Town of Jamestown

CERTIFICATE

I, Larry L. Austin, do hereby certify that the corner location on this record was determined by me and/or under my direct supervision and that this U.S. public land survey monument record is correct and complete to the best of my knowledge and belief.

Dated this 16th day of January, 2002

*Larry L. Austin*  
 Larry L. Austin S-1903



HISTORY OF CORNER ESTABLISHMENT

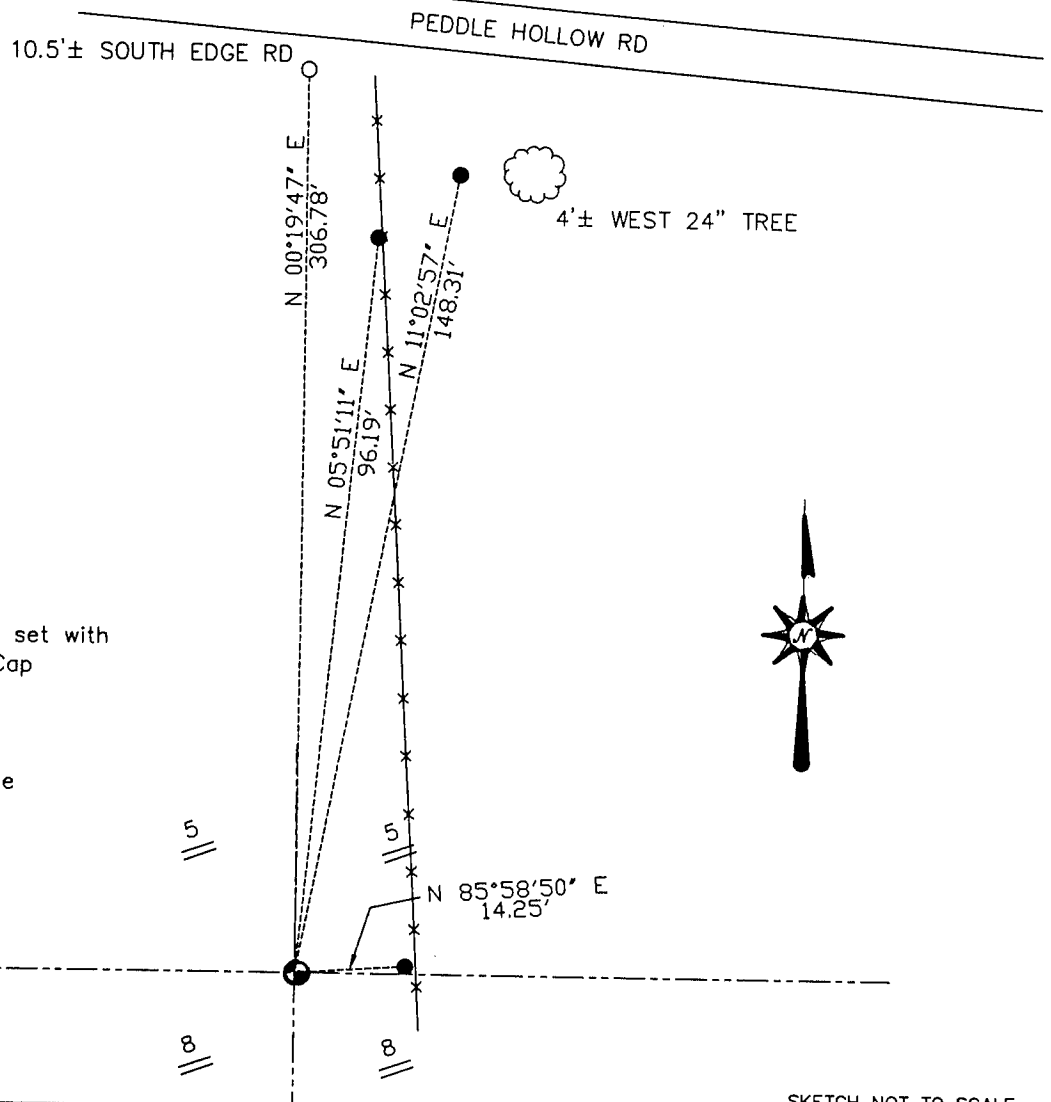
Corner was originally set in 1832 by Lyon. In 1853 Overtan tied to the corner. In 1896 Sampson also tied to the corner. No mention of monument or witness trees.

DESCRIPTION OF CORNER EVIDENCE FOUND

Corner was reset proportionally between the northwest and northeast corners. Verified their location using EDM and GPS methods.

DESCRIPTION OF CORNER AND WITNESS MONUMENTS, references and accessories used to perpetuate the original or re-established location of this corner. Witnesses to the corner location Bobby Sedgwick

SKETCH:



LEGEND

- Number 6 x 24" iron bar set with Grant County Aluminum Cap
- 1" x 12" Iron Pipe tie
- x— Approximate existing fence
- Bullet in conc. fnd.

SKETCH NOT TO SCALE

AUSTIN ENGINEERING, LLC  
 4211 HWY 81 EAST, LANCASTER, WI 53813  
 PHONE 608-723-6363 FAX 608-723-6702

FIELDBOOK: 95-02  
 G: \T2NR2W\T2NR2W  
 C: \CTA\TIE\T1NR2W\T1NR2W  
 CREW: BS-SB-SA-DM-KW

DRAWN BY: CT AUSTIN  
 APPROVED: LL AUSTIN

CORNER NUMBER **30**