

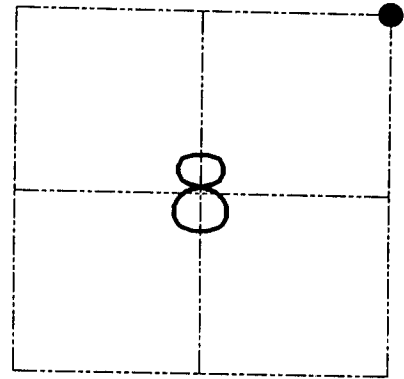
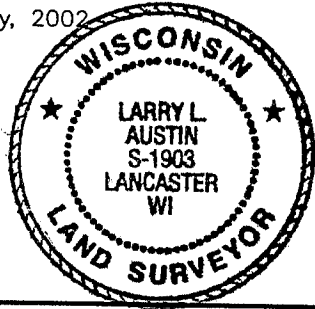
U.S. PUBLIC LAND SURVEY MONUMENT RECORD – GRANT COUNTY, WI  
 Section 8, Town 1 North Range 2 West, Town of Jamestown

CERTIFICATE

I, Larry L. Austin, do hereby certify that the corner location on this record was determined by me and/or under my direct supervision and that this U.S. public land survey monument record is correct and complete to the best of my knowledge and belief.

Dated this 16th day of January, 2002

*Larry L. Austin*  
 Larry L. Austin S-1903



● = CORNER LOCATION

HISTORY OF CORNER ESTABLISHMENT

Corner was originally set in 1832 by Lyon. In 1853 Overtan tied to the corner. In 1896 Sampson also tied to the corner. No mention of monuments or witness trees.

DESCRIPTION OF CORNER EVIDENCE FOUND

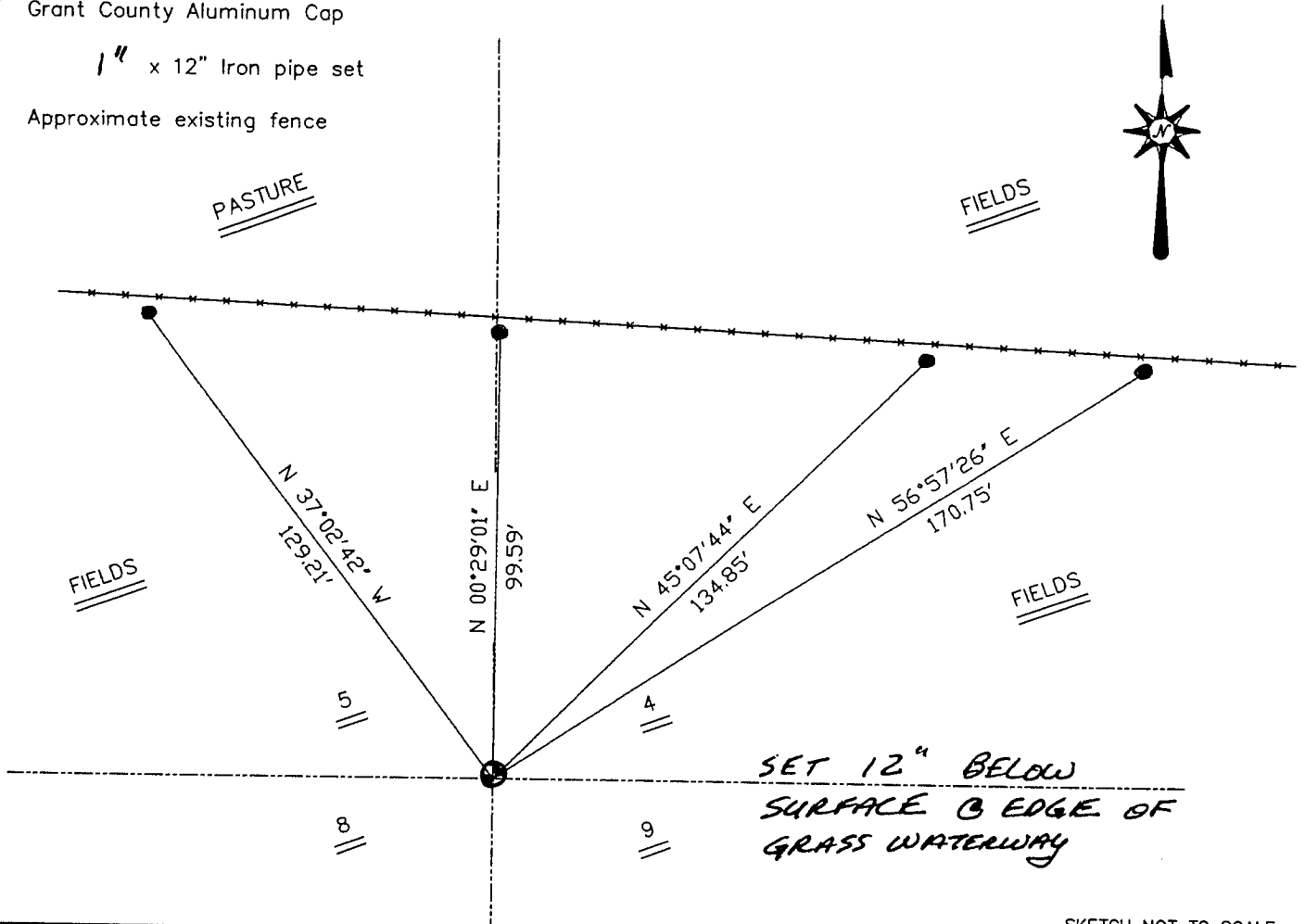
I reset the corner proportionally between adjoining corners all ways. Verified this location using EDM and GPS methods.

DESCRIPTION OF CORNER AND WITNESS MONUMENTS, references and accessories used to perpetuate the original or re-established location of this corner. Witnesses to the corner location Bobby Sedgwick

SKETCH:

LEGEND

- ⊕ Number 6 x 24" iron rod set with Grant County Aluminum Cap
- 1" x 12" Iron pipe set
- Approximate existing fence



SKETCH NOT TO SCALE

AUSTIN ENGINEERING, LLC

4211 HWY 81 EAST, LANCASTER, WI 53813  
 PHONE 608-723-6363 FAX 608-723-6702

FIELDBOOK: 95-02  
 G: \T2NR2W\T2NR2W  
 C: \CTA\TIE\T1NR2W\T1NR2W  
 CREW: BS-SB-SA-DM-KW

DRAWN BY: CT AUSTIN  
 APPROVED: LL AUSTIN

CORNER NUMBER 29