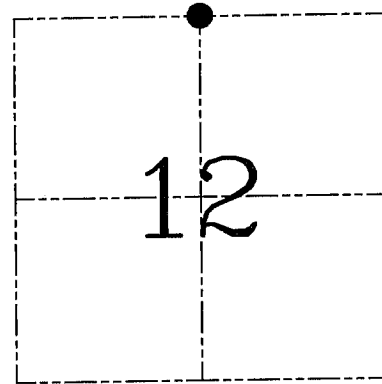
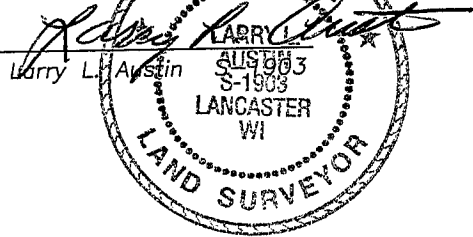


U.S. PUBLIC LAND SURVEY MONUMENT RECORD – GRANT COUNTY, WI
Section 12, Town 1 North Range 2 West, Town of Jamestown

CERTIFICATE

I, Larry L. Austin, do hereby certify that the corner location on this record was determined by me and/or under my direct supervision and that this U.S. public land survey monument record is correct and complete to the best of my knowledge and belief.

Dated this 30th day of December, 2005



● = CORNER LOCATION

HISTORY OF CORNER ESTABLISHMENT

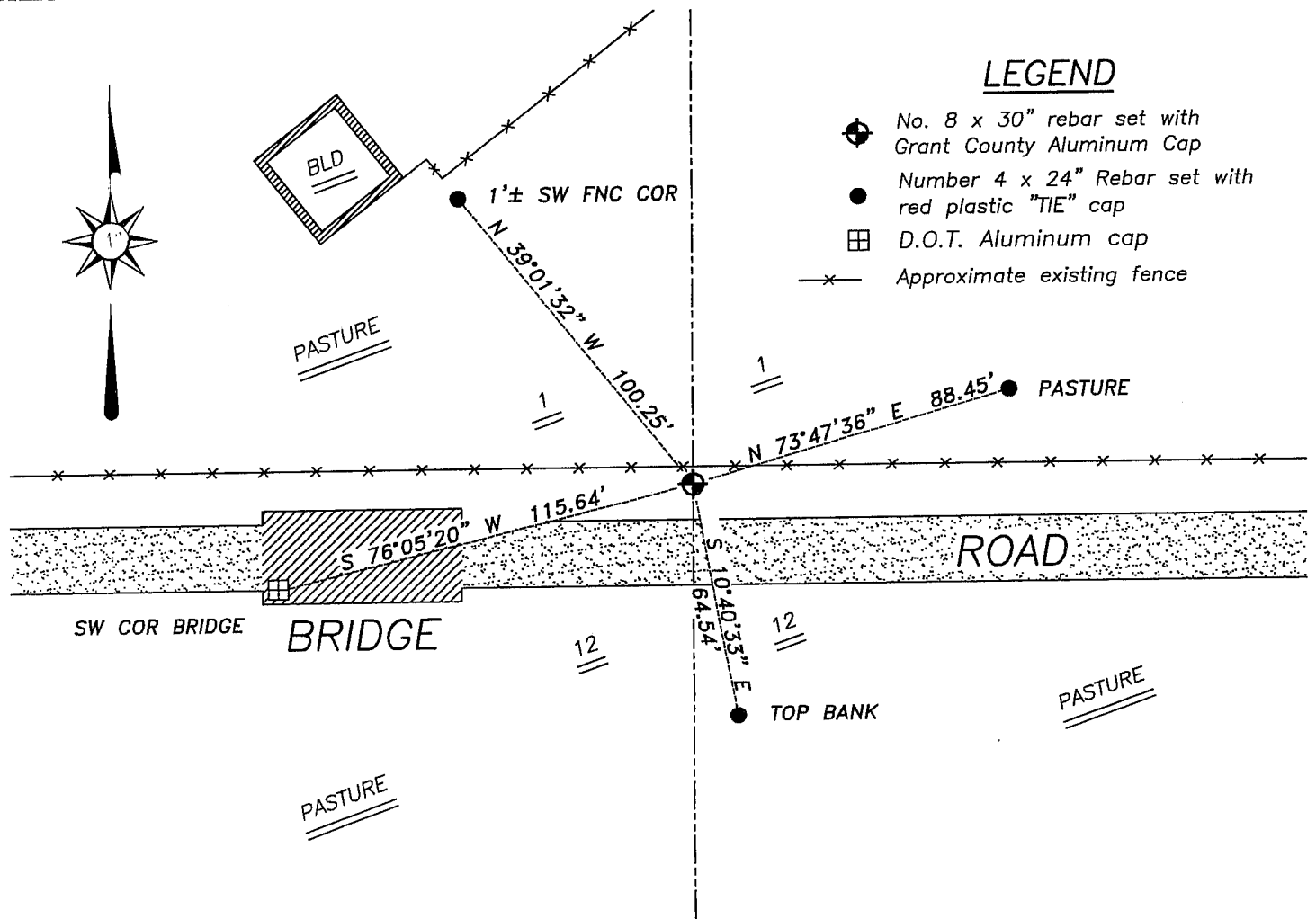
Corner was originally set in 1832 by Lyon. In 1995 I set a Grant County Aluminum monument at this location.

DESCRIPTION OF CORNER EVIDENCE FOUND

I reset the corner after bridge construction and set new witness monuments as shown below. Verified this location using EDM & GPS methods.

DESCRIPTION OF CORNER AND WITNESS MONUMENTS, references and accessories used to perpetuate the original or re-established location of this corner. Witnesses to corner location Bobby Sedgwick & Brad Digman & Shane Austin

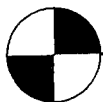
SKETCH:



LEGEND

- No. 8 x 30" rebar set with Grant County Aluminum Cap
- Number 4 x 24" Rebar set with red plastic "TIE" cap
- ⊞ D.O.T. Aluminum cap
- x— Approximate existing fence

SKETCH NOT TO SCALE



Austin Engineering LLC

4211 HWY 81 E, LANCASTER, WI 53813
 PHONE 608-723-6363 FAX 608-723-6702

JOB NUMBER: 02S292
 FIELDBOOK: TDSR, 2308
 G:\T1NR2W\12
 H:\TIE\T1NR2W\22

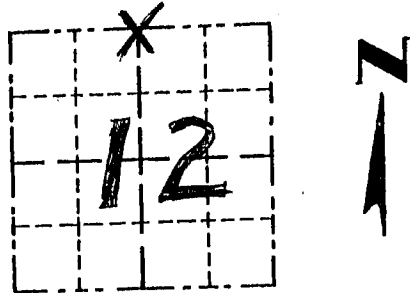
DRAWN BY: ML DIGMAN
 APPROVED: LL AUSTIN

GRANT COUNTY

Survey Monument Record

TYPE OF MONUMENT ALUMINUM MONUMENT SET
 STATE PLANE COORDINATES: N _____
 E _____
 ELEVATION — M.S.L. DATUM: _____
 THETA ANGLE: _____
 FIELD BOOK: 9411
 PAGE _____

CORNER NO. 22
 SECTION 12
 TOWN 1N
 RANGE 2W
N 1/4 COR.



LOCATION
(Indicated by "X")

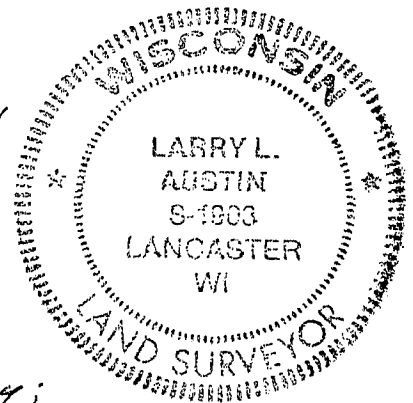
BASIS FOR MONUMENT LOCATION

(Use reverse side if necessary)

Show info such as: History of corner, with reference to Vol. and pg., dates, surveyor; exact description of monument replaced; if location computed, by taped or EDM traverse; landowner, remarks, etc.

ORIGINAL CORNER SET IN 1832 BY LUCIUS LYON. NO SURVEY RECORD OF THE CORNER FOUND SINCE THE ORIGINAL SURVEYS; I SET THE EAST-WEST LOCATION OF THE CORNER AT EQUIDISTANT FROM THE NE & NW CORNERS OF THE SECTION; NORTH-SOUTH LOCATION WAS ESTABLISHED USING MEASUREMENTS TO THAT PROPERTY DESCRIBED IN VOL 485 AT PAGE 674 AND IN VOL 711 AT PAGE 231, GRANT CO. REGISTRY; THIS LOCATION FITS WELL WITH A PROJECTION OF CEMETARY FENCE FROM THE EAST & ALSO MATCHES (WITHIN 7') OF A CALLIN THE ORIGINAL NOTES TO THE CREEK; USED EDM METHODS

SEAL:



CERTIFIED CORRECT
Larry L. Austin
 Registered Land Surveyor
 DATE: 2/6/95

TIE SKETCH

Show at least three (3) ties and monument?

