

U.S. PUBLIC LAND SURVEY MONUMENT RECORD - GRANT COUNTY, WI

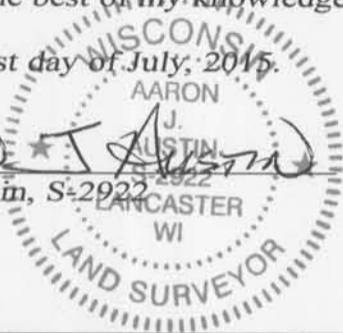
Section 34, Town 1 North Range 1 West, Town of Hazel Green

CERTIFICATE:

I, Aaron J. Austin, Wisconsin Professional Land Surveyor, do hereby certify that the corner location on this record was determined by me and/or under my direct supervision and that this U.S. Public Land Survey Monument Record is correct and complete to the best of my knowledge and belief.

Dated this 21st day of July, 2015.

Aaron J. Austin
 Aaron J. Austin, S-2922



● = CORNER LOCATION

HISTORY OF CORNER ESTABLISHMENT:

- 1832 Lucius Lyon set the original corner.
- 1986-Bruce Bowden reset the corner on Certified Survey Map No. 247.
- 1996-Bruce Bowden prepared a U.S Public Land Survey Monument Record.
- 2006-Paul Brashaw tied to the corner on Certified Survey Map No. 1242.
- 2010-Paul Brashaw tied to the corner on Certified Survey Map No. 1545.
- 2014-Aaron Austin tied to the corner on a Survey filed in Book 35, Page 17.

DESCRIPTION OF CORNER EVIDENCE FOUND:

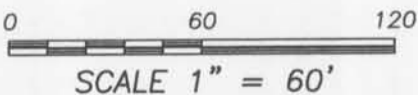
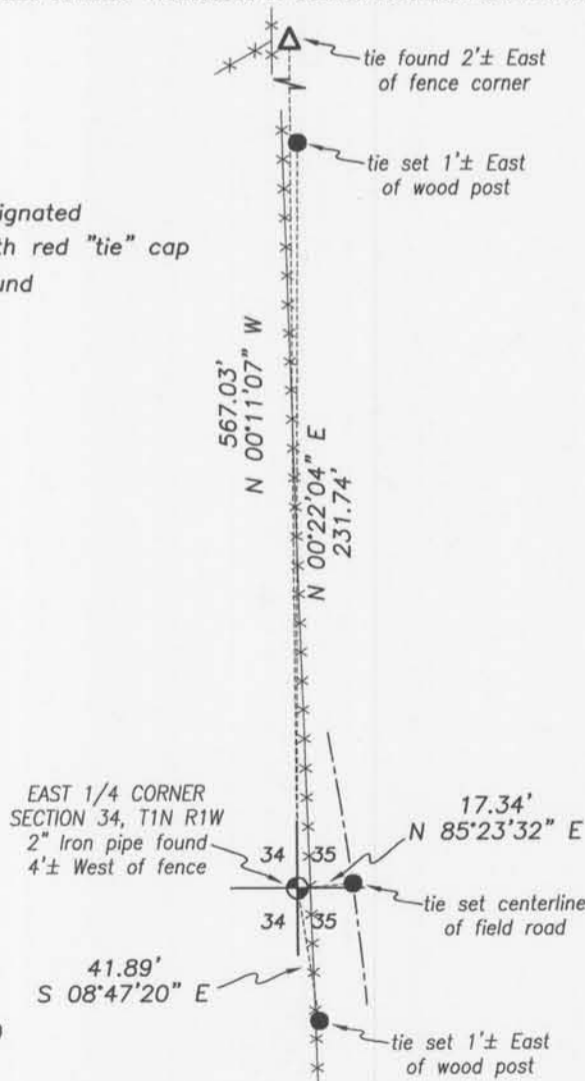
I found and accepted the 2" iron pipe. I found 1 witness corner and could not recover the other 3. I set 3 new witness corners as shown hereon and verified this location with E.D.M. and G.P.S. methods.

DESCRIPTION OF CORNER AND WITNESS MONUMENTS, references and accessories used to perpetuate the original or re-established location of this corner. Witnesses to corner location Shane Austin and Brandon Austin

SKETCH:

LEGEND

- ⊙ Section Corner - as designated
- 1/2" x 12" rebar set with red "tie" cap
- △ 1" diameter iron pipe found
- x-x- Approximate fence



4211 HWY 81 E, LANCASTER, WI 53813
 PHONE: 608-723-6363 FAX: 608-723-6702

JOB NO: 15s112
 H:CRD\15s112
 H:\TIE\T1NR1W\118

FIELDBOOK: TDSR
 DRAWN BY: AJ AUSTIN
 CREW: SW AUSTIN, BL AUSTIN

JUL 23 2015

U. S. PUBLIC LAND SURVEY MONUMENT RECORD

INSTRUCTIONS: This record shall show the location of the corner and shall include all of the following nine elements (a through i).

(a) Identify the corner by reference to the U.S. public land survey system.

● = Corner monument restored.

The East Quarter Corner
of Section 34, Town 1
North, Range 1 North,
Hazel Green Township,
Grant County, WI

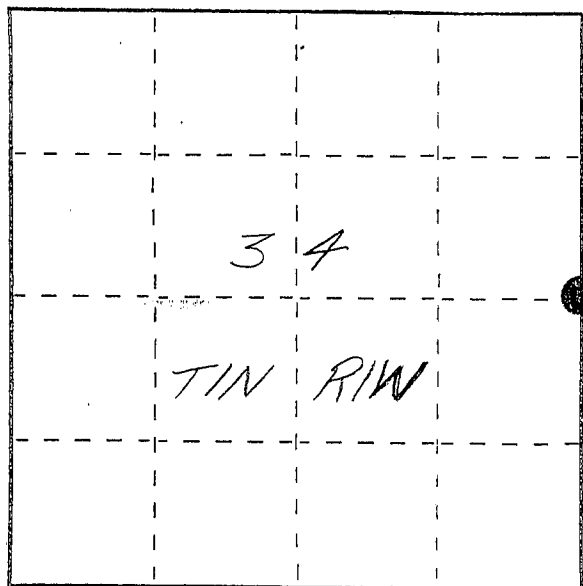
GRANT COUNTY COORDINATES

X - 885085.54

Y - 402308.35

LAT. 42° 30' 52.4982" N

LONG. 90° 27' 57.2028" W



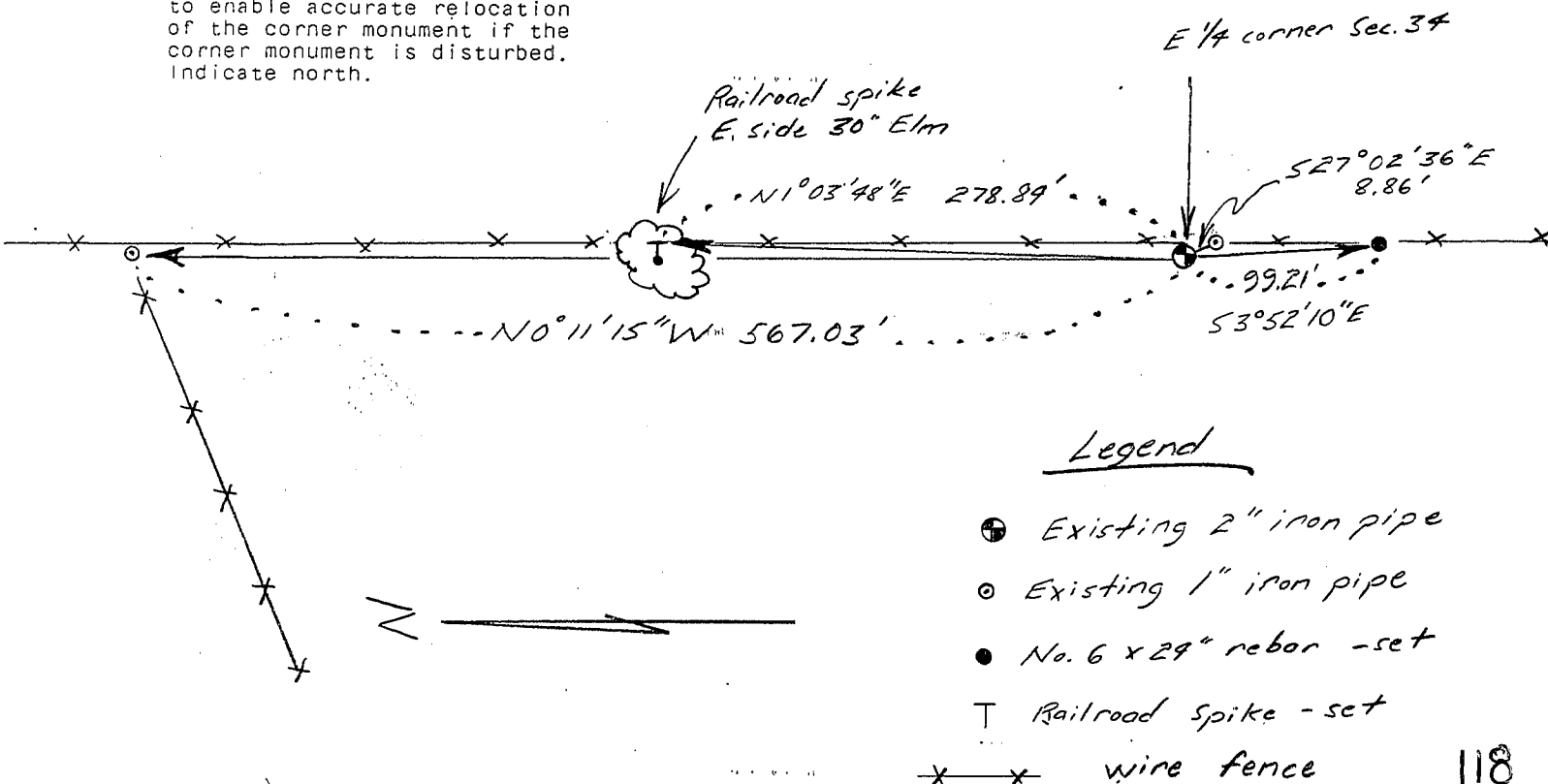
(b) Describe any record evidence, monument evidence, occupational evidence, testimonial evidence or any other material evidence you considered, and whether the monument was found or placed.

A 2" iron pipe was found as per Certified Survey Map No. 247 and its position verified following a GPS and EDM survey of the area.

(c) In the plan view drawing below, provide reference ties to at least 4 witness monuments, or, if the location is within a municipality, to at least 2 witness monuments. (Witness monuments shall be made of concrete, natural stone, iron or other equally durable material, ~~except~~ ~~wood~~.) Describe witness monuments.

(d) Show a plan view drawing depicting the relevant monuments and reference ties which is sufficient in detail to enable accurate relocation of the corner monument if the corner monument is disturbed. Indicate north.

Scale: 1" = 100'



Legend

- Existing 2" iron pipe
- Existing 1" iron pipe
- No. 6 x 29" rebar - set
- T Railroad Spike - set
- x-x wire fence

(e) Describe any material discrepancy between the location of the corner as restored or reestablished and the location of that corner as previously restored or reestablished by distance and direction. Show the discrepancy on the plan view drawing under (d), above. Show the distances between the corner as previously restored or reestablished and (1) the corner as restored or reestablished, and (2) to at least 2 of the witness monuments shown on the drawing in (d); above.

None

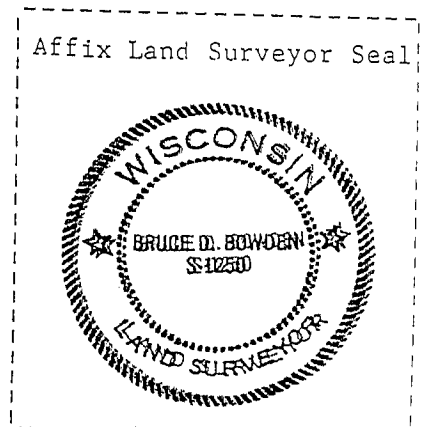
(f) Was the corner restored through acceptance of (1) an obliterated evidence location, or, (2) a found perpetuated location?

(2.) A found perpetuated location.

(g&h) Was the corner reestablished through lost corner proportionate methods? If so, show the method, including the directions and distances to other public land survey corners used as evidence or used for proportioning in determining the corner location?

No.

(i) I, BRUCE D. BOWDEN,
(type or print name) certify that the corner location shown on this record was determined by me or under my direction and control and that this U.S. Public Land Survey Monument Record is correct and complete to the best of my knowledge and belief.



Signature

Date

May 22, 1996