

U.S. PUBLIC LAND SURVEY MONUMENT RECORD - GRANT COUNTY, WI

Section 33, Town 1 North Range 1 West, Town of Hazel Green

CERTIFICATE:

I, Aaron J. Austin, do hereby certify that the corner location on this record was determined by me and/or under my direct supervision and that this U.S. Public Land Survey Monument Record is correct and complete to the best of my knowledge and belief.

Dated this 21ST day of JUNE, 2013.

Aaron J. Austin
 Aaron J. Austin, S-2922

GRANT COUNTY COORDINATES:
 N:399,707.99 E:877,100.49



● = CORNER LOCATION

HISTORY OF CORNER ESTABLISHMENT:

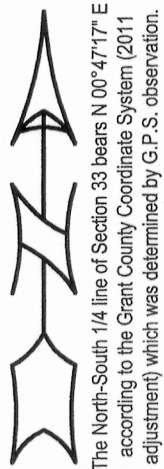
- 1833 Lucius Lyon set original corner.
- 1851 Everett tied to this corner on a survey. (Book B, Page 277)
- 1854 Overton tied to this corner on a survey. (Book B, Page 353)
- 1979 Brashaw set a No. 6 rebar at this corner location. (Book G, Page 3)
- 1984 Brashaw tied to this corner on a survey. (CSM NO. 284)
- 1997 L. Austin tied to this corner on a survey. (Book 2, Page 23)

DESCRIPTION OF CORNER EVIDENCE FOUND:

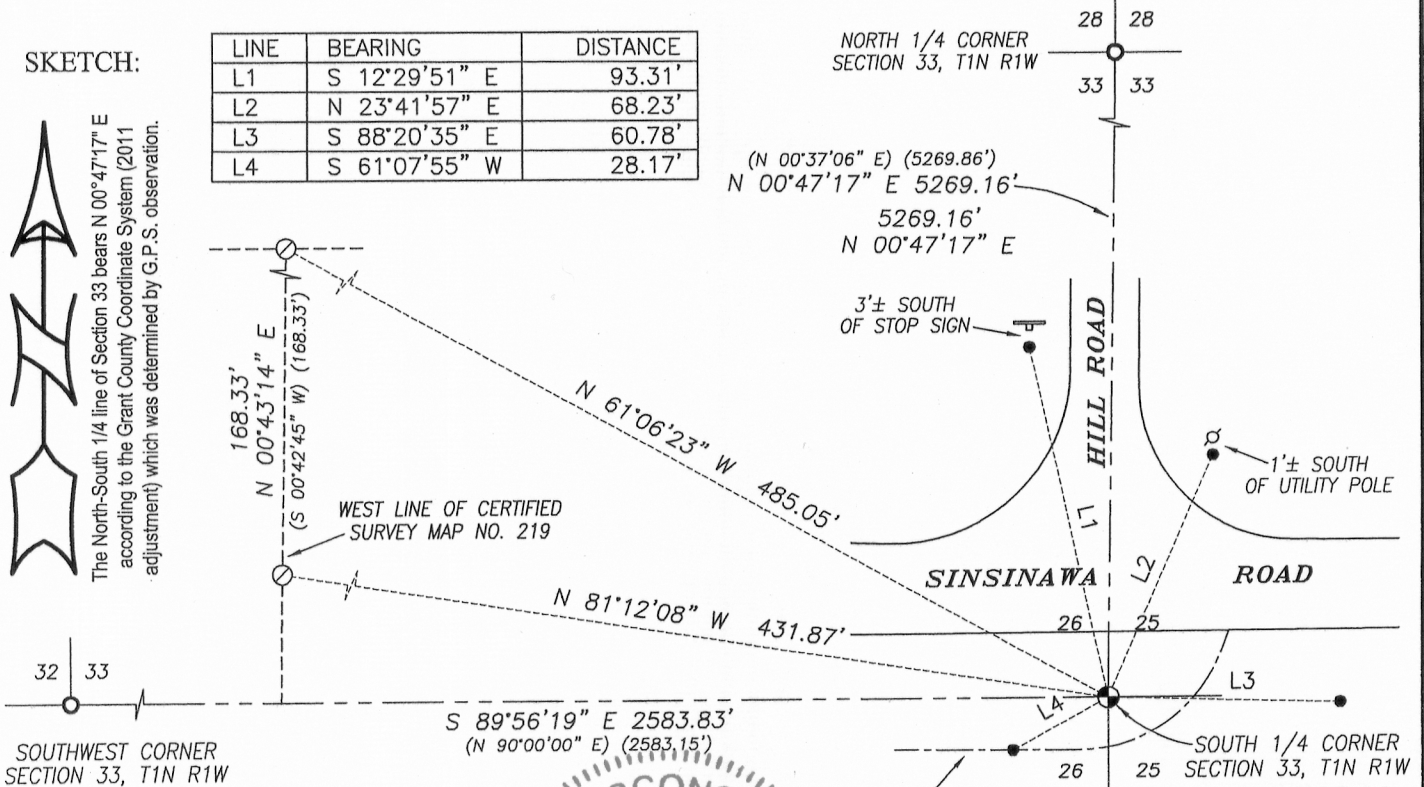
No evidence found of the corner. I retraced the corner location based upon monuments found from Certified Survey Map No. 219. This location checked well with dimensions shown on surveys to the Southwest corner and the North 1/4 corner of Section 33. I verified this location by G.P.S. methods.

DESCRIPTION OF CORNER AND WITNESS MONUMENTS, references and accessories used to perpetuate the original or re-established location of this corner. Witnesses to corner location Shane Austin.

SKETCH:

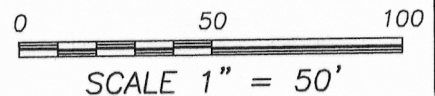


LINE	BEARING	DISTANCE
L1	S 12°29'51" E	93.31'
L2	N 23°41'57" E	68.23'
L3	S 88°20'35" E	60.78'
L4	S 61°07'55" W	28.17'



LEGEND

- No. 8 x 30" rebar set with Grant County Aluminum Cap
- Number 4 x 24" Rebar set with red plastic "TIE" cap
- No. 6 rebar found
- No. 5 rebar found



4211 HWY 81 E, LANCASTER, WI 53813
 PHONE: 608-723-6363 FAX: 608-723-6702

JOB NO: 13s076
 G:\HMP\T1NR1W\33
 H:\TIE\T1NR1W\128

FIELDBOOK: TDSR
 DRAWN BY: AJ AUSTIN
 CREW: BS-SB